



المملكة الأردنية الهاشمية

The Hashemite Kingdom of Jordan

Press Release

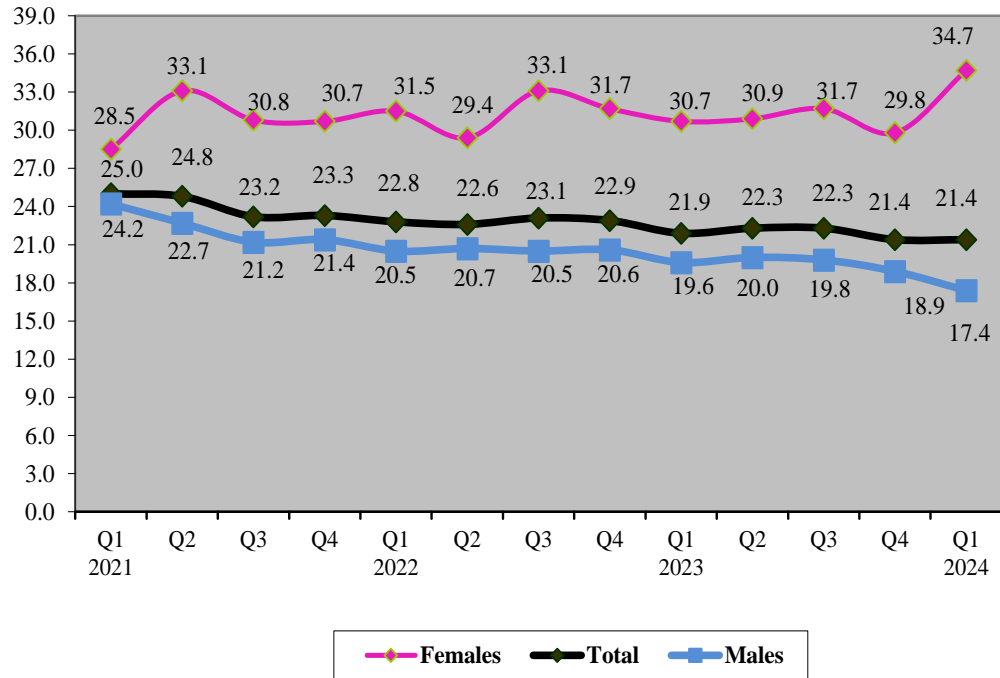
The Department of Statistics: The unemployment rate at 21.4% during the first quarter of 2024

The Department of Statistics issued its quarterly report on the Employment and Unemployment in Jordan for the first quarter Q1 2024. The following are the main results of this report:

Unemployment:

- ❖ Unemployment rate has reached 21.4% during Q1 2024 with a decrease of (0.5) percentage point compared with Q1 2023, and it remained steady compared to Q4 2023.
- ❖ Unemployment rate for males has reached 17.4% during Q1 2024, which shows a decrease by (2.2) percentage points compared to Q1 2023.
- ❖ Unemployment rate for females has reached 34.7% during Q1 2024, which shows an increase by 4.0 percentage points compared to Q1 2023.
- ❖ Comparing unemployment rates of Q1 2024 with Q4 2023, it is clear that unemployment rate has decreased for males by (1.5) percentage points, and it increased for females by 4.9 percentage points.

Figure1: Total Unemployment Rates by Sex and Quarters for the years 2021-2024



The Unemployed:

- ❖ Unemployment rate among the holders of university degrees (unemployed individuals who hold a bachelor’s degree or higher divided by the labor force with the same educational level) has reached 25.8% compared to other educational levels.
- ❖ The results indicated that 61.5% of the total unemployed hold a secondary certificate or higher, and 37.9% hold less than secondary education.
- ❖ At the governorates level, the highest unemployment rate was recorded in Mafraq at 23.4%, and the lowest unemployment rate was in Jarash at 18.4% with a difference of 5 percentage points.

The Employed:

- ❖ 26.8% of the total population within age group ≤ 15 are employed.
- ❖ 34.2% of the total population within age group ≤ 23 are employed.
- ❖ 59.4% of employed males were concentrated within the age group 20-39 years against 59.8% for females.
- ❖ 47.1% of the employed individuals had educational qualifications less than secondary, 8.8% secondary education, and 43.6% higher than secondary.
- ❖ 84.5% of the employed individuals are paid employees (81.9% for males against 95.2% for females).

The Labor Force: (Employed & Unemployed):

- ❖ The refined economic participation rate (the labor force attributed to the population ≤ 15 years) has reached 34.1% for Q1 2024 compared to 33.3% for Q1 2023.
- ❖ The refined economic participation rate for males has reached 53.7% for Q1 2024 compared to 53.3% for Q1 2023.
- ❖ The refined economic participation rate for females has reached 15.5% for Q1 2024 compared to 13.7 for Q1 2023, whereas it is noted that women's economic participation has increased by 1.8 percentage points, noting that females economic participation rate in Arab countries is about 20.0%.

- ❖ The results show a clear variation in the labor force distribution with regard to educational level and sex. It was found that about 56.2% of the total male labor force hold less than secondary education against 8.6% for females.
- ❖ The results indicate that 73.0% of the total females labor force hold bachelor's level degree or higher compared to 27.2% among males.
- ❖ The percentage of female labor forces in the government sector to the total number of labor forces in this sector has reached 22.7%.

It worth mentioning that the labor force survey includes a sample size of 16,560 households distributed across all governorates of Jordan with representation urban, rural, and governorates. The labor force survey is conducted in the middle of each quarter of the year and provides data that reflects the situation of the entire quarter (January, February, and March). The individual is asked whether he/she has searched for a job during the four weeks before the interview day; in accordance with international recommendations adopted in Jordan.

