



**Press Release**  
**Department of Statistics: Unemployment Rate Decreased to 16.1% in Q1 2026**

1. Unemployment rate (UNRATE) for the total population in Jordan (Jordanians and non-Jordanians) decreased to 16.1% in Q1 2026, a decrease of a half percentage point compared to Q1 2025, and a decrease of 2.3 percentage points over the past four years compared to Q1 2022.
2. UNRATE among Jordanian males reached 17.9% during Q1 2026, a decrease of 0.7 percentage points compared to Q1 2025.
3. UNRATE among Jordanian males and females decreased by 1.7 percentage points over the past four years compared to the same quarter of 2022, and UNRATE among Jordanian males decreased by 6.3 percentage points since 2021.
4. UNRATE among Jordanians aged +24 during Q1 2026 was 17.7%: 14.4% for males and 29% for females. UNRATE for non-Jordanians aged +24 was 5.4%: 6.0% for males and 3.4% for females.
5. UNRATE among the male population (Jordanians and non-Jordanians) reached 14.6% during Q1 2026, a decrease of 0.6 percentage points compared to Q1 2025 and an increase of 0.8 percentage points compared to Q4 2025.
6. UNRATE among Jordanian males and females aged +15 years reached 21.1% during Q1 2026, a decrease of 0.2 percentage points compared to Q1 of 2025, when it was 21.3%, and a decrease of 0.1 percentage points compared to Q4 of 2025, when it was 21.2%.
7. UNRATE among Jordanian women reached 32.7% during Q1 2026, a decrease of 2.1 percentage points compared to the Q4 2025, and an increase of 1.5 percentage points compared to Q1 2025.
8. UNRATE among non-Jordanian residents reached 8.7% during Q1 2026.

**Detailed Results:**

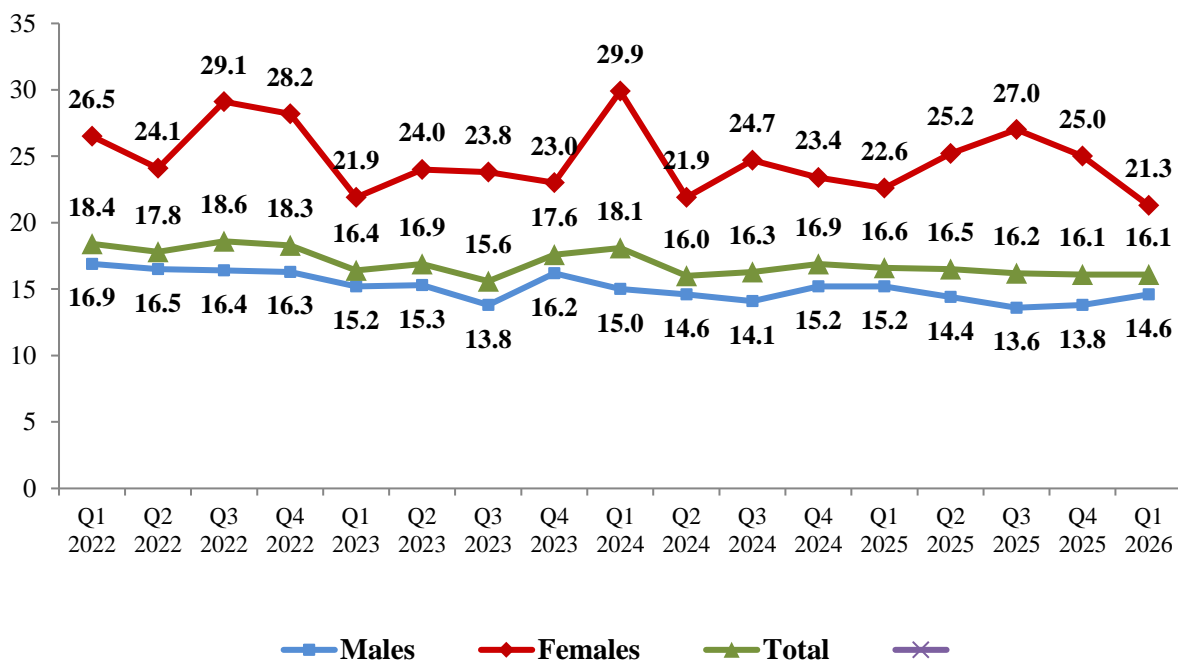
**First: Unemployment among the Entire Population:**

Unemployment among the entire population refers to the UNRATE for all residents of **the Hashemite Kingdom of Jordan**, including both Jordanian and non-Jordanian residents.

***Unemployment among the Entire Population:***

- UNRATE reached 16.1% during Q1 2026, indicating a decrease of 0.5 percentage points compared to Q1 2025, when it stood at 16.6%.
- UNRATE has decreased by 2.3 percentage points over the past four years compared to 2022.
- UNRATE among males reached 14.6% during Q1 2026, indicating a decrease of 0.6 percentage points compared to Q1 2025.
- UNRATE among females reached 21.3% during Q1 2026, indicating a decrease of 1.3 percentage points compared to Q1 2025, and a decrease of 3.7 percentage points compared to Q4 2025.

*Figure 1: Population Macro Unemployment Rate by Sex and Quarters for the Years 2022 - 2026*

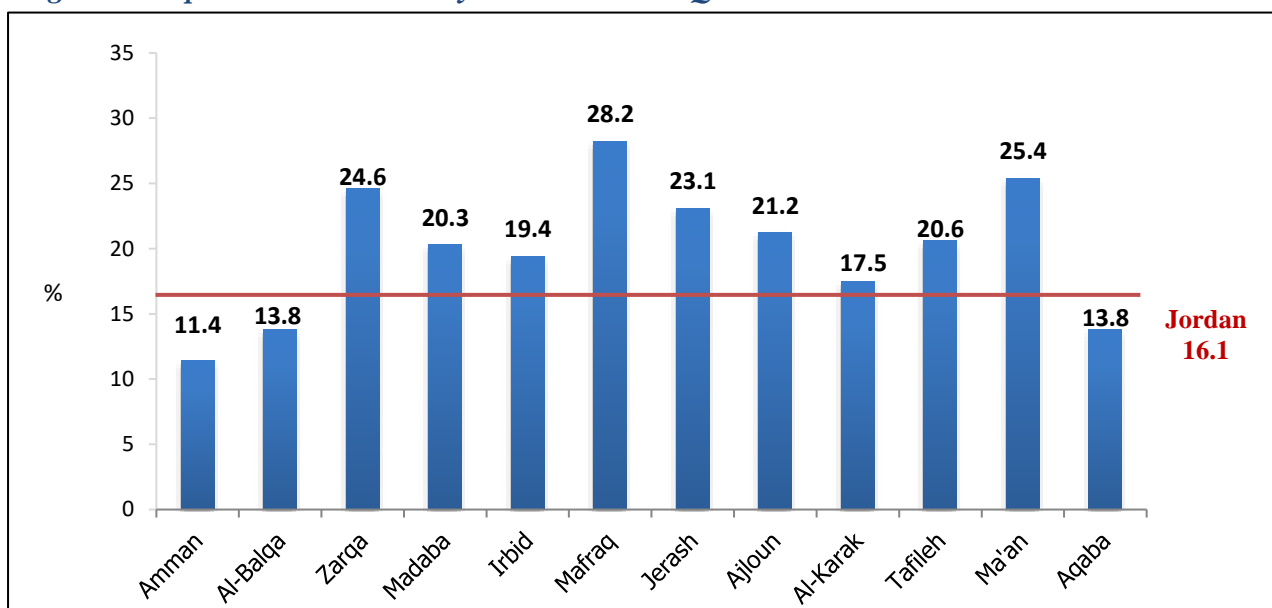


Source: Labour Force Survey/ DOS

### *Characteristics of the Unemployed Population:*

- The unemployed individuals were distributed by educational level, with 52.7% of the total unemployed individuals hold secondary education and higher, and 45.9% hold less than secondary education.
- At the governorate level, the highest UNRATE was recorded in Mafrag governorate at 28.2%, and the lowest UNRATE was recorded in Amman governorate at 11.4%.
- By age group, UNRATE for age group +24 years was 12.7%: 11.0% for males and 18.5% for females.

*Figure 2: Population UNRATE by Governorate in Q1 2026*



*Source: Labour Force Survey/ DOS*

### *Characteristics of the Employed Population:*

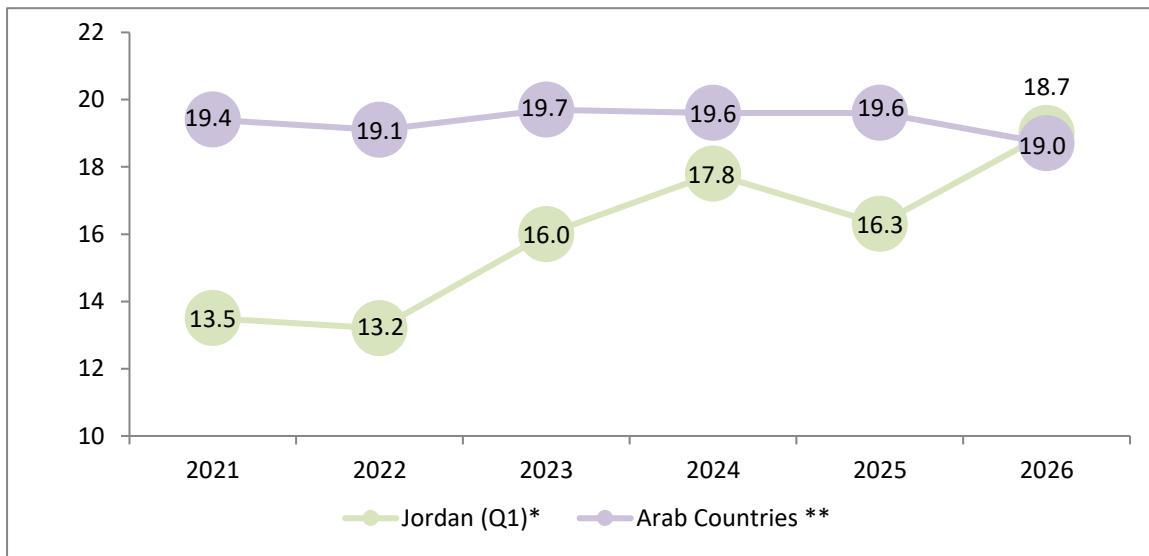
- Employment Rate (the ratio of employed individuals to the labour force) reached 83.9% during Q1 2026: 85.4% for males and 78.7% for females.
- The percentage of employed individuals aged +23 years reached 40.3% during Q1 2026.

- According to the age group, 57.2% of employed males were concentrated in the age group (20-39) years, while the percentage of employed females in the same age group reached 73.6%.
- By educational level, the percentage of employed individuals who hold less than secondary education was 52.7%, secondary education 17.7%, and higher than secondary education 29.6%.
- The percentage of paid workers was 88.4%: 86.1% for males and 97.4% for females.
- Data of Q1 2026 showed that the percentage of expatriate workers remained stable at 44.0% of the total employed individuals compared to the same period in 2025.
- In the government sector, male employees comprised 78.9% of the total workforce, while female employees comprised 21.1%.
- The employment rate increased by 2.5 percentage points over the four years compared to the same quarter of 2022.

***Labor Force for the Entire Population (Employed and Unemployed):***

- The revised economic participation rate (labor force attributed to the population aged +15 years) reached 38.9% in Q1 2025 compared to 40.5% in Q1 2026.
- The revised economic participation rate for males reached 58.9% in Q1 2025 compared to 59.5% in Q1 2026.
- The revised economic participation rate for females reached 19.0% in Q1 2026 compared to 16.3% in Q1 2025, indicating an increase of 2.7 percentage points in the female economic participation rate over the two periods, noting that the overall female economic participation rate in the Arab countries is 18.7%

**Figure 3: Females Revised Economic Participation in Jordan and Arab Countries**



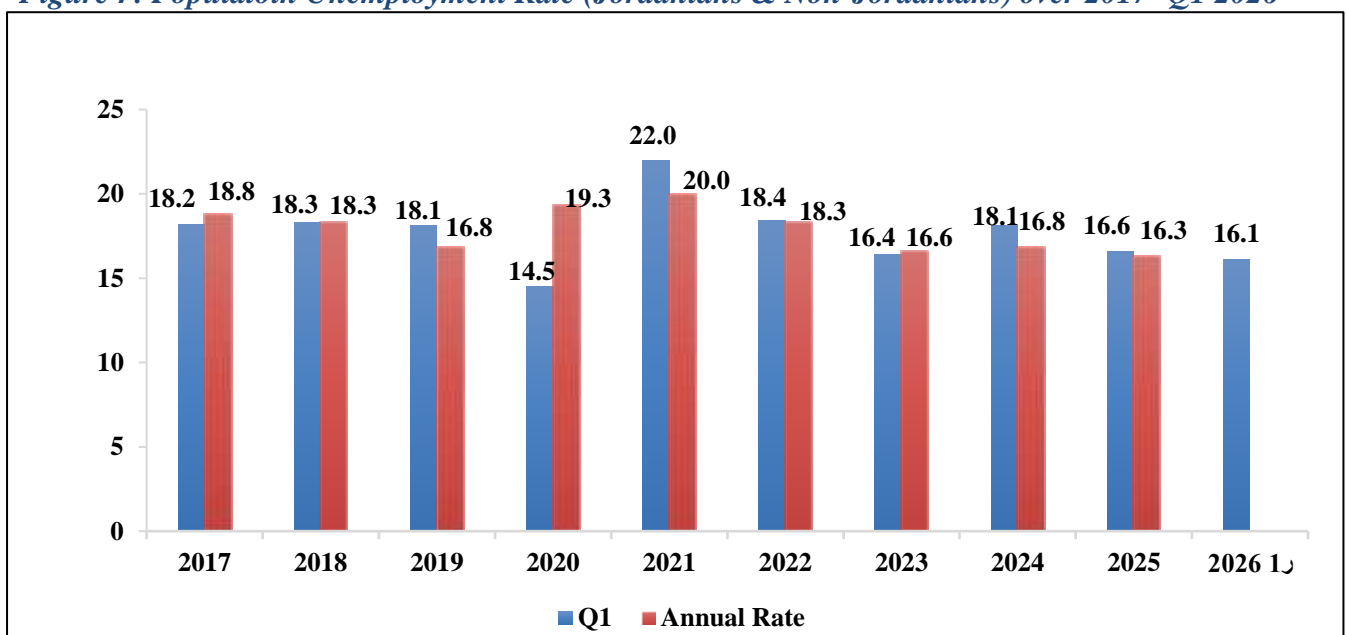
\*Source: Labor Force Survey (LFS) /DOS

\*\*Source: World Bank

The results also showed a clear disparity in the distribution of the workforce by educational level and sex, as 44.1% of the female workforce holds a bachelor's degree or higher compared to 20.0% of the male workforce.

- The results also indicated that 51.9% of the male workforce holds less than a secondary education compared to 32.9% of the female workforce.

**Figure 4: Population Unemployment Rate (Jordanians & Non-Jordanians) over 2017- Q1 2026**



Source: Labor Force Survey (LFS) / DOS

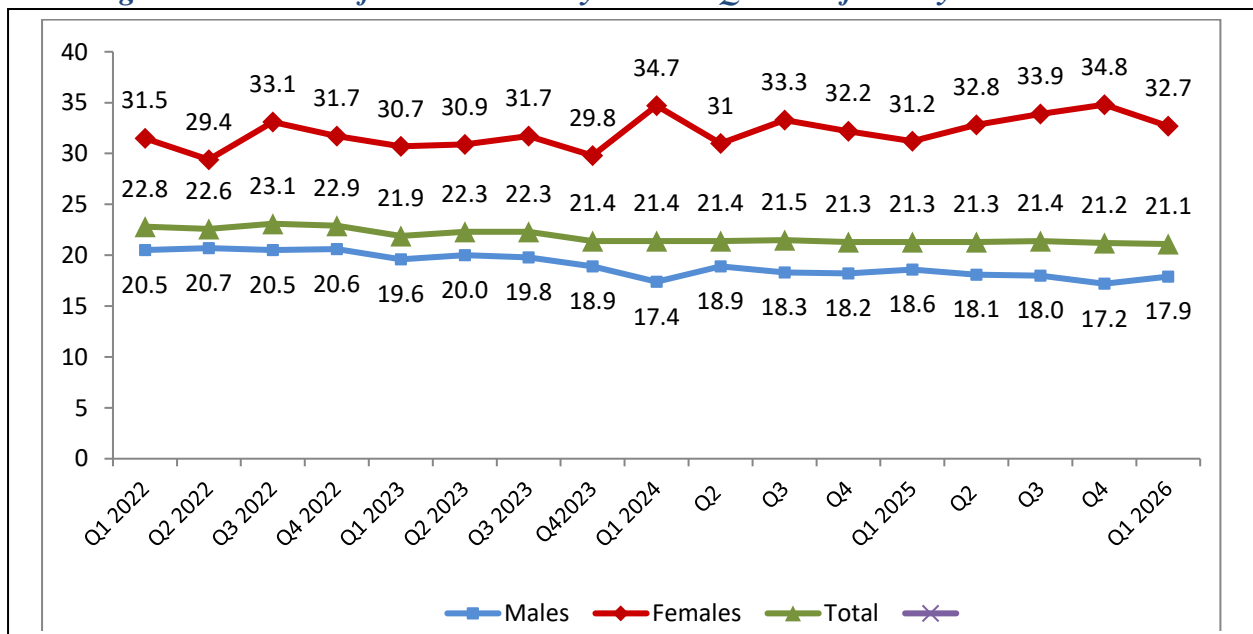
## Second: Unemployment among Jordanians

Unemployment among Jordanians (Males and Females), and the related results were as follows:

### Jordanians Unemployment (Males and Females):

- Jordanians' UNRATE reached 21.1% during Q1 2026, indicating a decrease of 0.2 percentage points compared to Q1 2025, when it stood at 21.3%.
- Jordanians' UNRATE decreased by 1.7 percentage points over the past four years compared to the same quarter of 2022.
- Among males, UNRATE reached 17.9% during Q1 2026, indicating a decrease of 0.7 percentage points compared to Q1 2025.
- UNRATE among Jordanian males decreased by 6.3 percentage points since Q1 2021.
- Among females, UNRATE reached 32.7% during Q1 2026, indicating an increase of 1.5 percentage points compared to Q1 2025, and a decrease of 2.1 percentage points compared to Q4 2025.

**Figure 5: UNRATE for Jordanians by Sex and Quarters for the years 2022-2026**

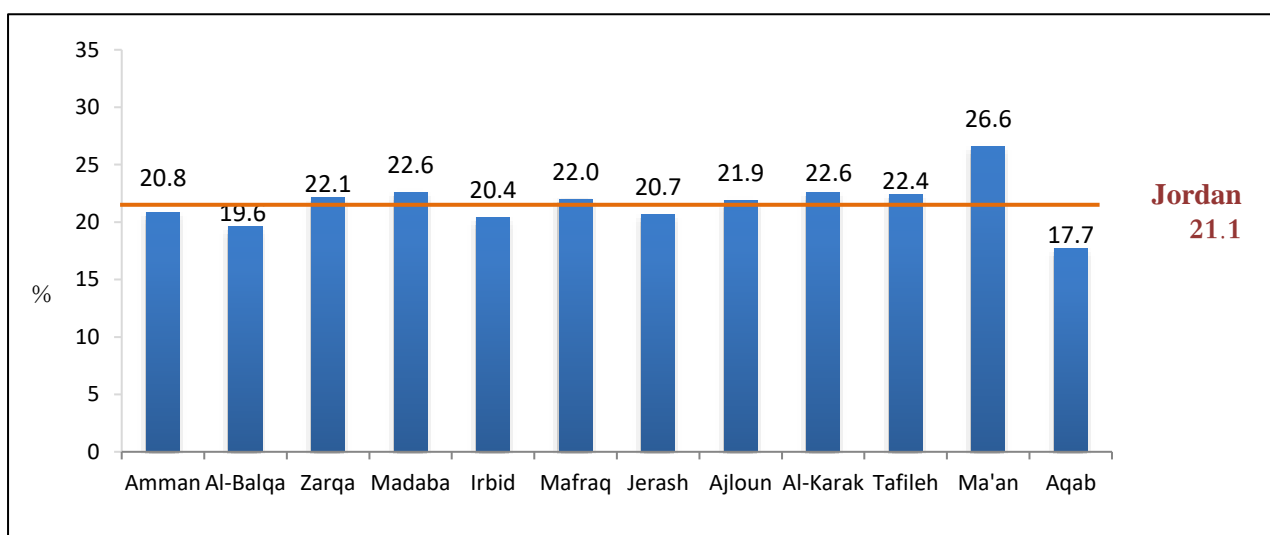


Source: Labor Force Survey (LFS) / DOS

### *Characteristics of the Unemployed Jordanians:*

- The results indicated that 60.1% of the total unemployed Jordanians hold secondary education and higher, and 39.3% hold less than secondary education.
- By governorates, the highest UNRATE among Jordanians was recorded in Ma'an governorate, as it reached 26.6%, and the lowest was in Aqaba governorate, as it reached 17.7%.
- By age group, UNRATE for the age group +24 years reached 17.7%, of which 14.4% for males and 29.0% for females.

*Figure 6: UNRATE among Jordanians by Governorate in Q1 2026*



### *Characteristics of the Employed Jordanians:*

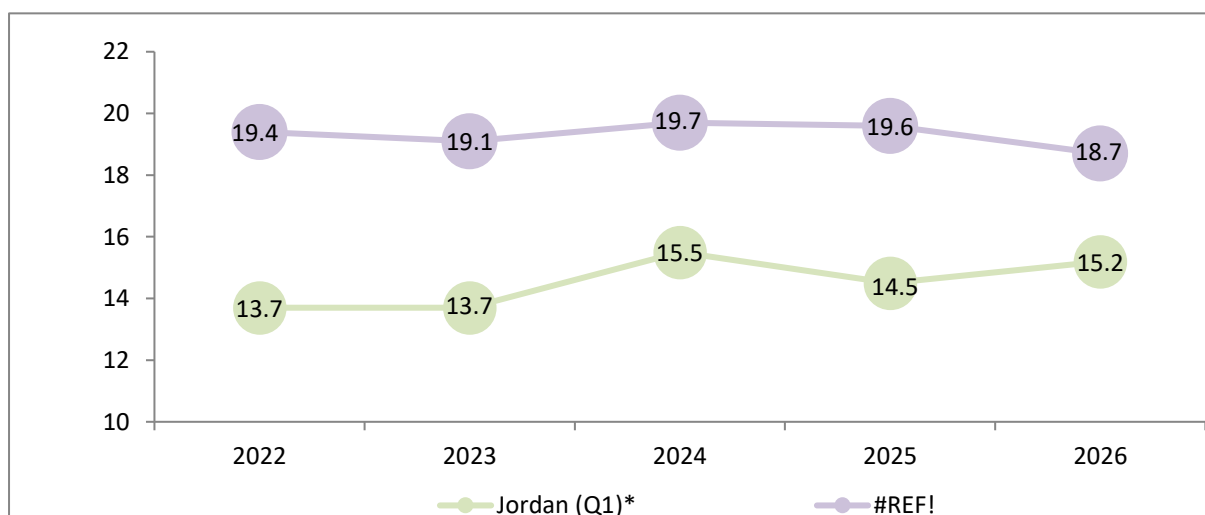
- Employment Rate for Jordanians (the ratio of employed individuals to the labour force) reached 78.9% during Q1 2026: 82.1% for males against 67.3% for females.
- Employment rate increased by 1.6 percentage points during the four years (compared to the same quarter of 2022).
- The percentage of employed individuals of the total population aged +23 years reached 32.8% during Q1 2026.

- By educational level, the percentage of employed individuals who hold less than secondary education was 46.6%, secondary education 10.2%, and higher than secondary education 43.2%.
- The percentage of paid workers reached 85.7%: 83.4% for males against 95.7% for females.

***Labor Force among Jordanians (Employed and Unemployed):***

- The revised economic participation rate (labor force attributed to the population aged +15 years) reached 34.5% in Q1 2026 compared to 32.9% in Q1 2025.
- The revised economic participation rate for males reached 53.4% in Q1 2026 compared to 51.2% in Q1 2025.
- The revised economic participation rate for females reached 15.2% in Q1 2026 compared to 14.5% in Q1 2025, indicating a 0.7 percentage point increase in the females economic participation rate between the two periods. It is worth noting that the female economic participation rate in Arab countries is 18.7%.

***Figure 7: Revised Economic Participation Rate for Jordanian Females in Jordan and Arab Countries***

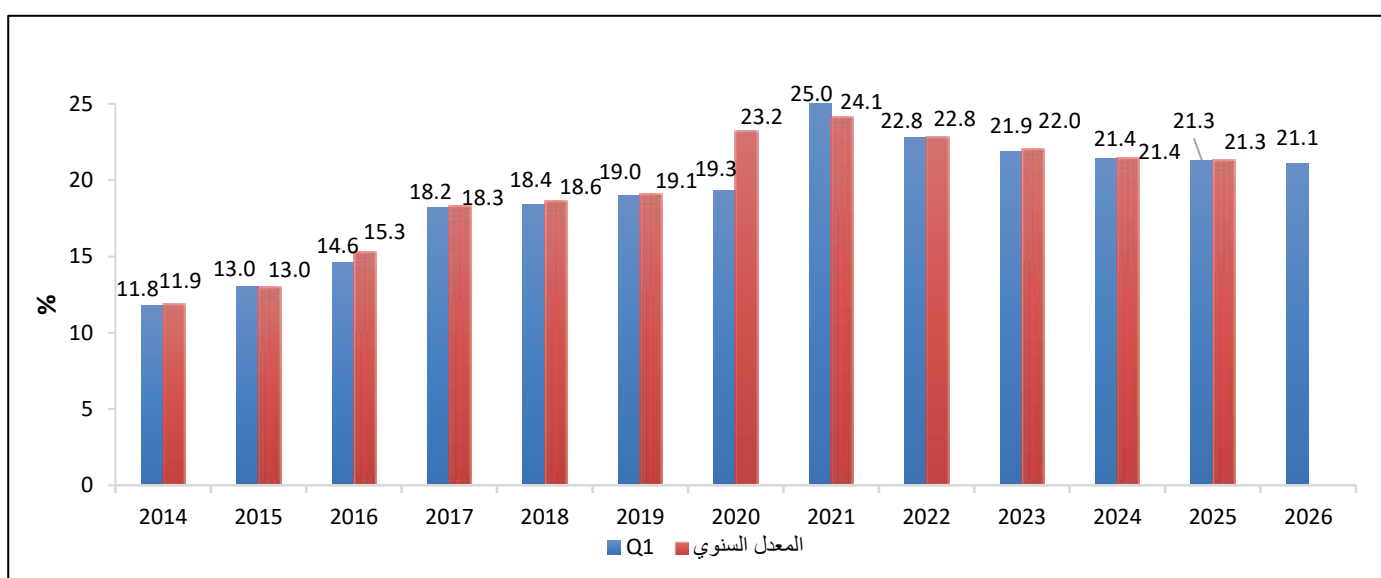


***\*Source: Labor Force Survey (LFS) /DOS***

***\*\*Source: World Bank***

- The results showed a clear disparity in the distribution of the workforce by educational level and sex, whereby 72.4% of the female workforce holds a bachelor's degree or higher compared to 28.0% of the male workforce.
- The results also indicated that 54.2% of the male workforce holds less than a secondary education compared to 10.4% of the female workforce.
- The percentage of male Jordanians employed in the government sector reached 78.8%, while the percentage of female employees was 21.2%.

*Figure 8: Quarter and Annual UNRATE for Jordanians 2014 – Q1 2026*



*Source: Labor Force Survey (LFS) / DOS*

### *Third: Unemployment among Non-Jordanians :*

Unemployment among non-Jordanians includes the non-Jordanian residents only, and their related results were as follows:

#### *Non-Jordanian Unemployment :*

- UNRATE among the non-Jordanian population reached 8.7% during Q1 2026, a decrease of 0.5 point compared to Q4 2025, when it was 9.2%.
- UNRATE among non-Jordanian males reached 9.7% during Q1 2026, indicating an increase of 0.1 percentage points compared to Q4 2025, when it was 9.6%.
- UNRATE among non-Jordanian females reached 5.2% in Q1 2026, a decrease of 2.2 percentage points compared to Q4 2025, when it was 7.4%.

- UNRATE for non-Jordanians aged +24 years reached 5.4%, of which 6.0% was for males and 3.4% for females.

***Labor Force among Non-Jordanians (Employed and Unemployed):***

- The revised economic participation rate for the non-Jordanian population (labour force attributed to the population aged +15 years) reached 54.1% in Q1 2026.
- The revised economic participation rate for non-Jordanian males reached 71.6% in Q1 2026.
- The revised economic participation rate for non-Jordanian females reached 29.5% in Q1 2026.

**UNRATE and the revised economic participation rate by sex and nationality in the first round of 2026**

| <i>Indicator</i>   | <i>Total</i> | <i>Male</i> | <i>Female</i> |
|--|--------------|-------------|---------------|
| <b><i>UNRATE</i></b>   |              |             |               |
| <i>Population</i>  | 16.1         | 14.6        | 21.3          |
| <i>Jordanian</i>   | 21.1         | 17.9        | 32.7          |
| <i>Non-Jordanian</i>   | 8.7          | 9.7         | 5.2           |
| <b><i>Labor Force (revised economic participation rate )</i></b> |              |             |               |
| <i>Population</i>  | 40.5         | 59.5        | 19            |
| <i>Jordanian</i>   | 34.5         | 53.4        | 15.2          |
| <i>Non-Jordanian</i>   | 54.1         | 71.6        | 29.5          |

It is worth noting that the Labour Force Survey (LFS) includes a sample of 16,560 households distributed across all governorates of Jordan, representing urban, rural, and governorate populations. The LFS is conducted in the middle of each quarter and provides data reflecting the entire quarter (January, February, and March). In accordance with international recommendations adopted in Jordan, respondents are asked whether they searched for work during the four weeks preceding the interview.

---

***For further information, please call: Mrs Jehan Alqariouti - Tel. 065300700 – ext. 1227***