



وزارة الإتصالات و تكنولوجيا المعلومات
Ministry of Information and
Communications Technology



2009

2010



وزارة الإتصالات و تكنولوجيا المعلومات

Ministry of Information and
Communications Technology

2009

2010

.2009

3340

.2004

.2009 2008

.....	
.....	
.....	
.....	
1	
51
5	1.1
5	2.1
5	3.1
6	4.1
72
133
214
335
356
397
418
479
5110

2009-2008



		12	
252009		
	5	13	
292009		
	12	5	14
312009		
		5	15
332009		
		15	16
342009		
			17
362009		
			18
38	..2009		
			19
402009	12	
)		20
422009	(
			21
432009		



		22
452009 ()	
	()	23
472009	
		24
492009 ()	
		25
492009 ()	
		26
532009-2008	
		27
592009-2008	
	15	28
692009-2008	



72009		1
82009		2
82009		3
9	2009		4
9	2009		5
92009		6
132009		7
			8
152009		
16	...2009	5	9
		5	10
172009		
		15	11
172009		
		5	12
182009		
		5	13
192009		



	5	14	
192009		
21	.2009	15	
22	...2009	16	
	12	5	17
222009		
	5	18	
232009		
242009	19	
252009	20	
	5	21	
262009		
	15	22	
262009		
	15	23	
272009		
272009	24	
	5	25	
282009		



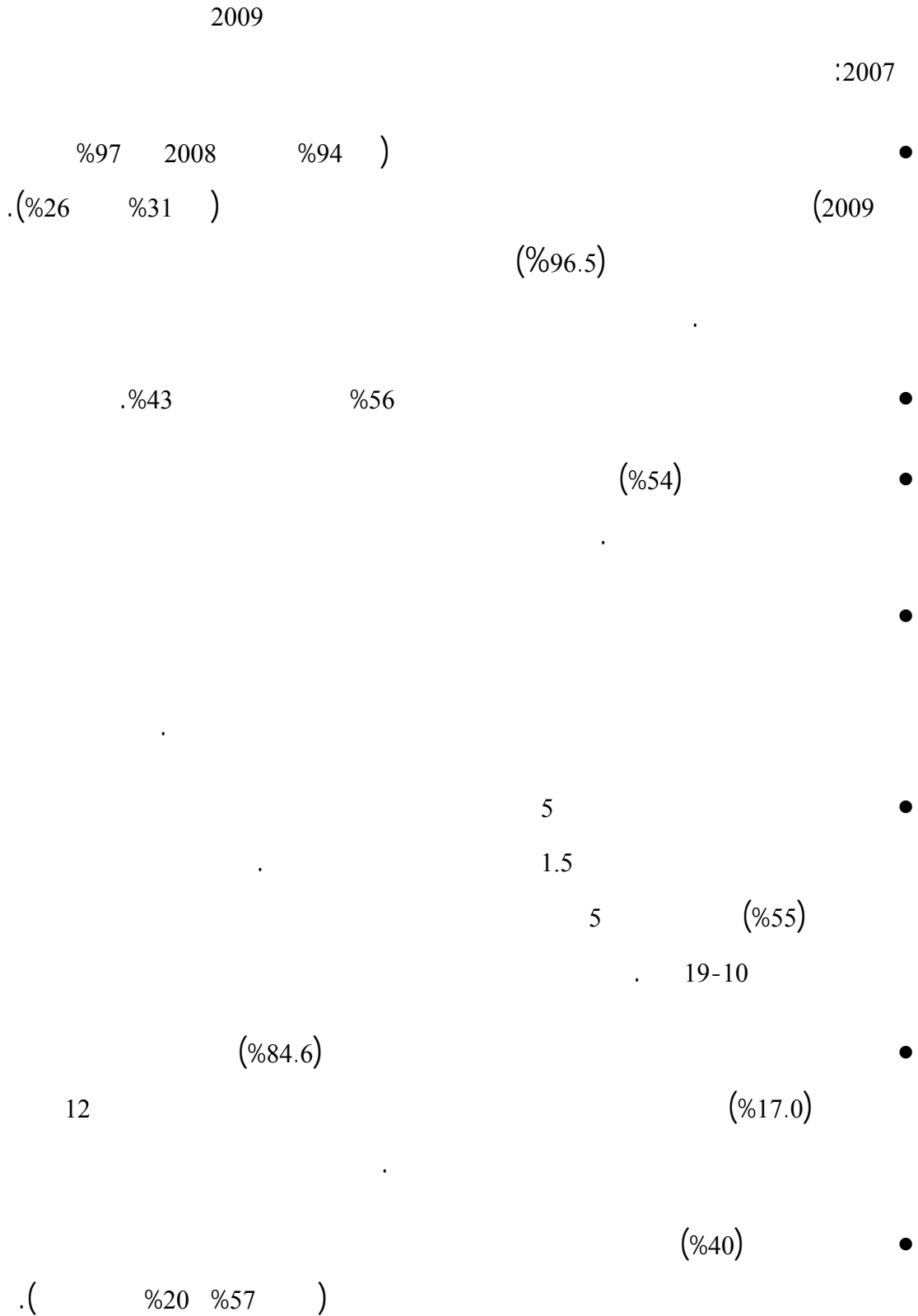
	5		26
28	2009	
		5	27
29	2009	12
	12	5	28
30	2009	
	5		29
33	2009	
		15	30
34	2009	
			31
35	2009	
		15	32
35	2009	
			33
36	2009	
			34
37	2009	
			35
37	2009	

/2009

с



392009	36
412009	37
	()	38
472009	



%13

%18

5

(%25.8 %21.6) 2009 2008

ADSL

34

24-15

.2009 2008

%24.0

%55.1

%42

5

%26

(%52)

(%65)

(%2.3)

15

%31 2009 %23)

.(2008

%14

%1

%17

400

600

(25 24)

(19 18)

.(18 20)

.1

1.1

2.1

3.1

3340

2009

3033

%91

4.1

5

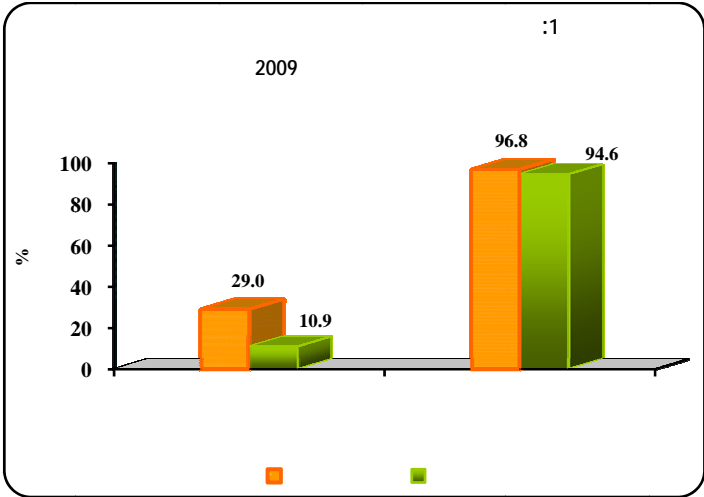
12

.

.2

2009

() .2008 %94 %97
 %31 %26



2009

:1

26.0	16.3	14.5	32.4	10.9	29.0	
96.5	97.5	95.3	96.9	94.6	96.8	
3033	276	829	1928	504	2529	

(%96.5)

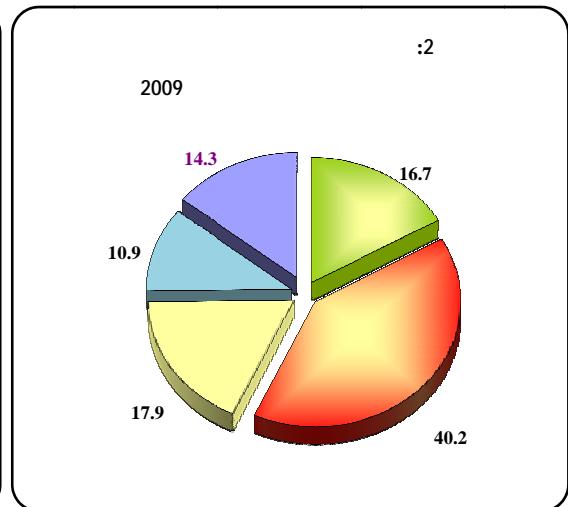
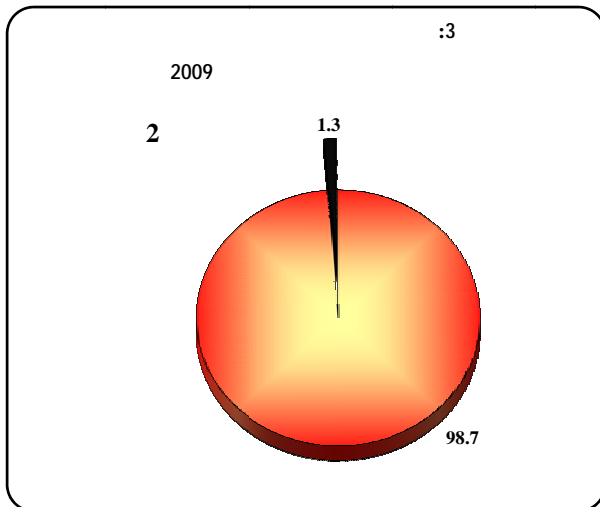
%18

(%40)

%11

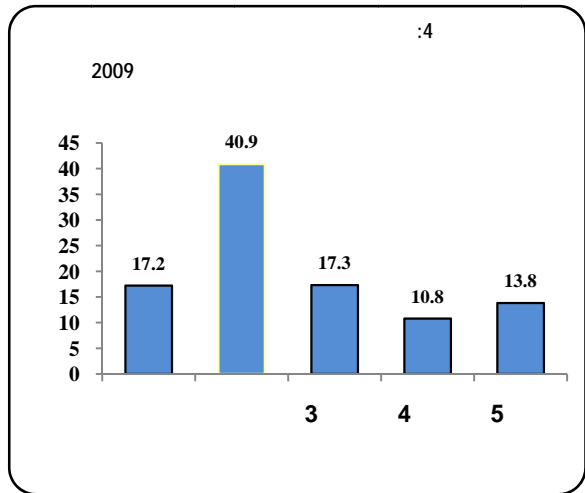
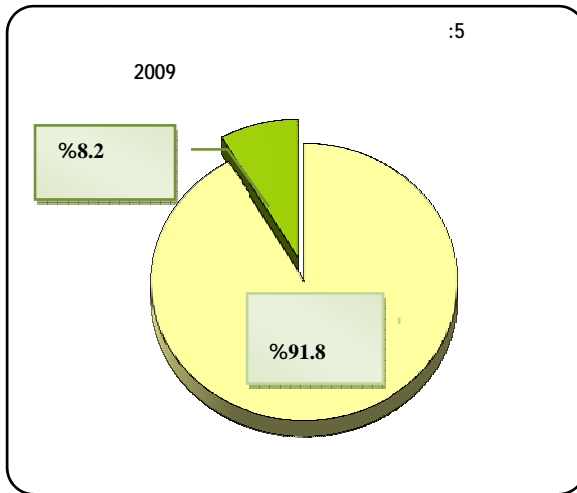
.%14

%1



(% 92)

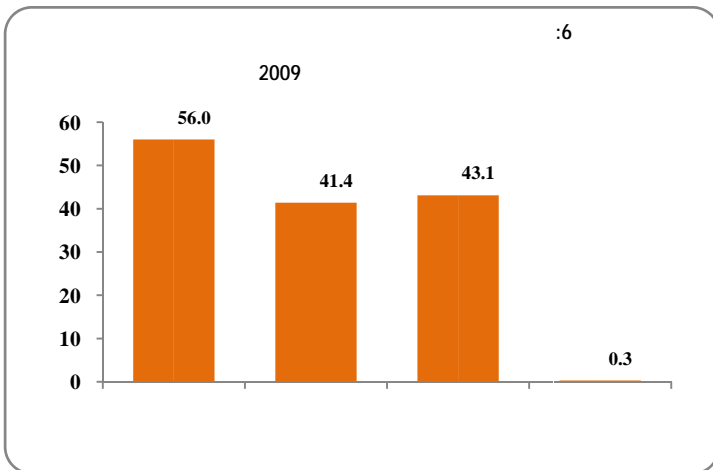
%87



.%43

%56

%43



(%67.1)
(%56.9 %64.8)

.%52.2

2009

:2

56.0	42.8	28.9	69.4	30.1	61.1	
41.4	64.8	56.9	31.4	67.1	36.3	
43.1	28.3	52.2	41.3	35.1	44.6	
0.3	0.0	0.0	0.5	0.0	0.3	
0.6	0.8	1.2	0.4	0.6	0.6	
2926	269	790	1868	477	2449	

2009

							/
1639	115	228	1296	143	1496	100 =	
37.9	44.9	55.7	34.1	54.9	36.2	1	
38.3	33.9	29.1	40.3	30.2	39.1	2	
12.4	10.0	7.9	13.4	6.6	13.0	3	
11.4	11.2	7.3	12.1	8.3	11.7	+4	
1210	174	450	586	320	890	100 =	
36.7	30.1	29.5	44.1	27.4	40.0	1	
44.0	43.6	45.5	42.9	47.3	42.8	2	
9.7	15.6	10.6	7.3	14.1	8.2	3	
9.6	10.7	14.4	5.6	11.2	9.1	+4	
1260	76	412	771	167	1092	100 =	
42.4	40.5	39.4	44.2	45.2	42.0	1	
36.2	41.5	38.0	34.7	37.4	36.0	2	
11.4	6.7	12.5	11.2	9.3	11.7	3	
10.1	11.2	10.1	10.0	8.1	10.4	+4	
8	0	0	8	0	8	100 = *	
78.2			78.2		78.2	1	
21.8			21.8		21.8	2	
						3	
						+4	

*

:

%38

:

%56

%40

)

%38

.(

%44

:

(

%46

)

.%37

%42

:

%45

%44

%78

:

%22

%78

(%97)

%11

:4

2009

97.1	94.4	97.9	97.0	95.8	97.3	
11.1	14.8	4.9	13.3	8.5	11.7	
2926	269	790	1868	477	2449	

%39

%15

%14

%13

:5

* 2009

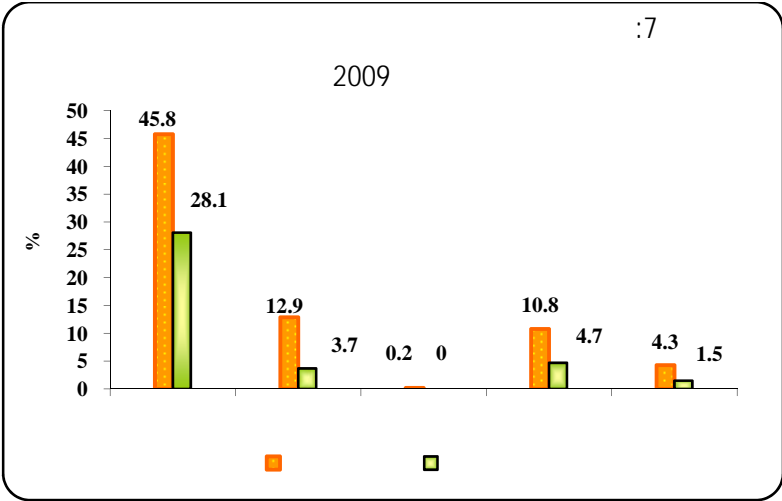
63.8	57.7	64.0	12.6	13.5	15.4	1
28.6	28.8	25.2	28.6	39.0	34.4	2
4.8	5.6	6.5	22.9	18.1	20.4	3
2.5	4.0	3.0	13.4	10.7	11.4	4
0.3	3.9	1.3	22.5	18.6	18.3	+ 5
129	143	253	1241	1182	1587	100 =

*

.3

(%54)

%54



(%39)

(%32 %59)

%35

%47

%38

2009 **:6**

42.9	37.5	35.4	46.9	28.1	45.8	
11.4	7.2	6.3	14.2	3.7	12.9	
9.8	8.4	5.0	12.0	4.7	10.8	
3.8	3.1	1.7	4.9	1.5	4.3	
3033	276	829	1928	504	2529	

(%96)

6

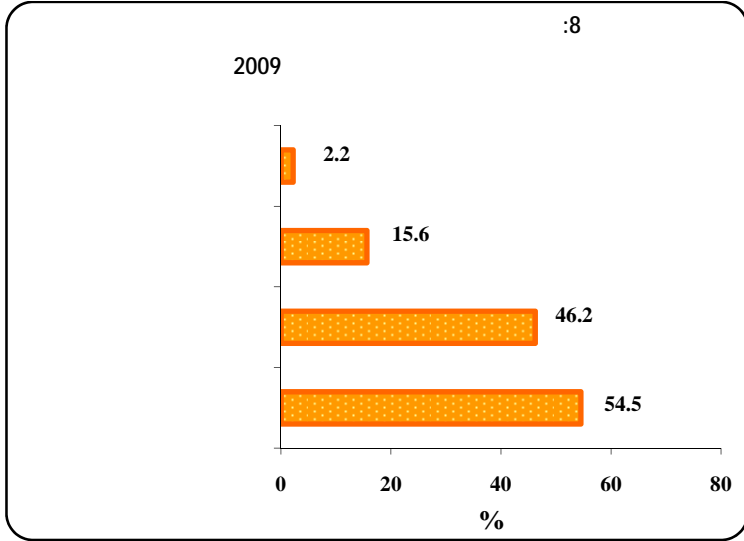
%21

:7

2009

	2	1	
1301	48	1253	100 =
13.0	0.0	13.5	1
18.0	27.9	17.6	2
14.8	9.8	15.0	3
15.9	19.4	15.7	4
17.2	9.8	17.5	5
21.2	33.1	20.7	+6
345	43	302	100 =
41.3	3.0	46.8	1
25.9	43.7	23.4	2
12.1	14.3	11.8	3
4.5	6.8	4.2	4
6.5	11.0	5.9	5
9.7	22.6	7.8	+6
297	4	293	100 =
32.2	0.0	32.6	1
24.3	40.7	24.1	2
17.8	0.0	18.1	3
8.9	0.0	9.0	4
6.0	0.0	6.0	5
10.9	59.3	10.2	+6
117	1	116	100 =
33.5	0.0	33.7	1
31.6	100.0	31.3	2
11.5	0.0	11.5	3
9.9	0.0	10.0	4
2.2	0.0	2.3	5
11.3	0.0	11.3	+6

%55



%62

%52

%46)

(

%16

%62

* :8

2009

54.5	59.7	61.5	49.7	62.3	52.4	
15.6	10.0	11.5	18.8	14.6	15.9	
46.2	41.2	40.0	50.6	40.8	47.8	
2.2	2.1	1.1	2.8	0.7	2.6	
1621	169	518	934	355	1265	

5 (%55)

19-10

5

%55

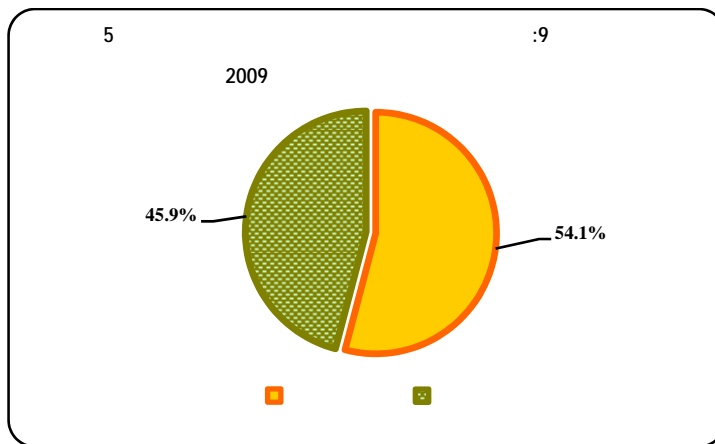
%59

1.5

%54

%51

%46



%100

*

(%82) 19-15

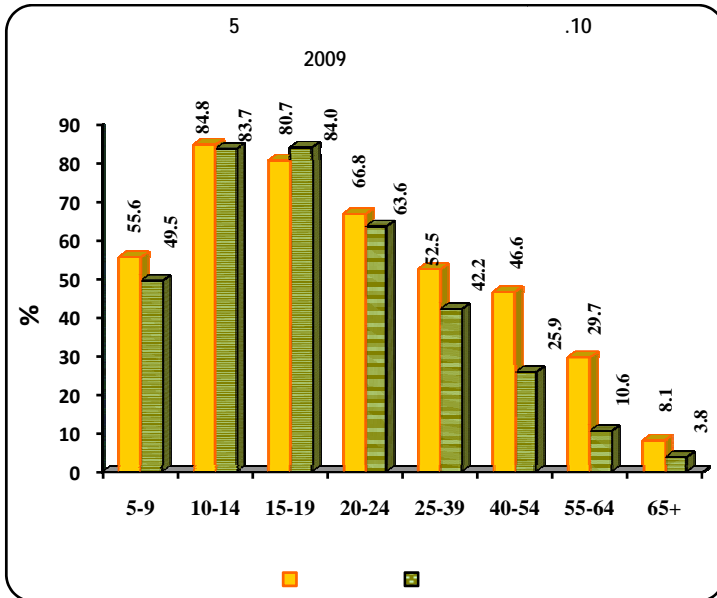
%84

14-10

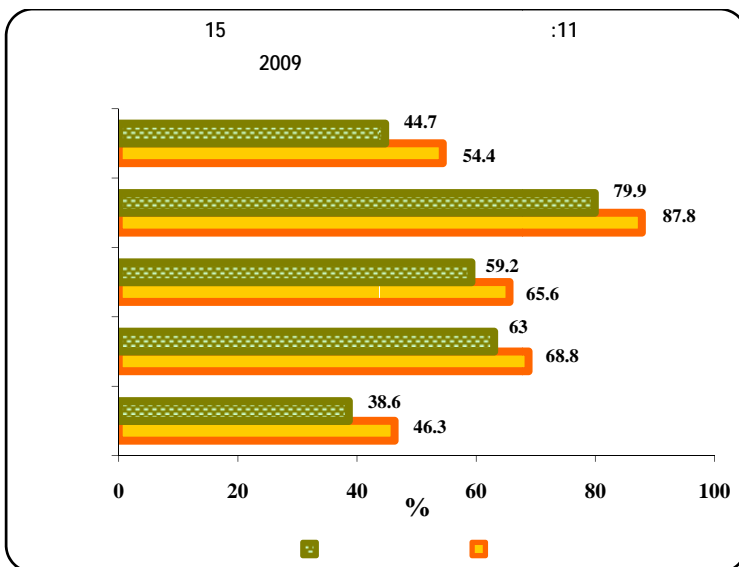
%65

24-20

40



19 -15



15

%84

%66

(%43)

5

%85

12

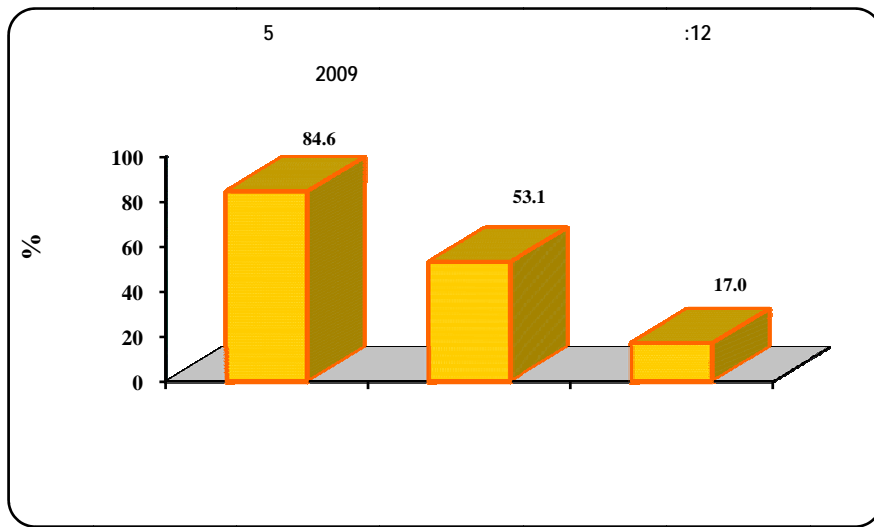
.(%73 %87)

%61)

%53

(%52

%17



5

12

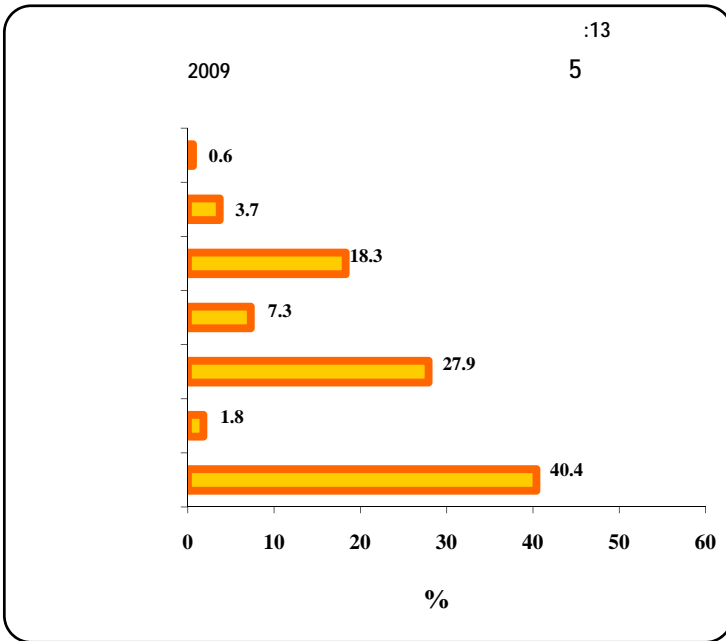
:9

2009

17.0	19.4	13.8	17.9	14.9	17.4	
84.6	78.1	79.5	87.4	73.3	86.5	
53.1	65.1	53.9	51.2	60.9	51.9	
7364	686	1809	4869	1053	6312	

(%40)

•



5

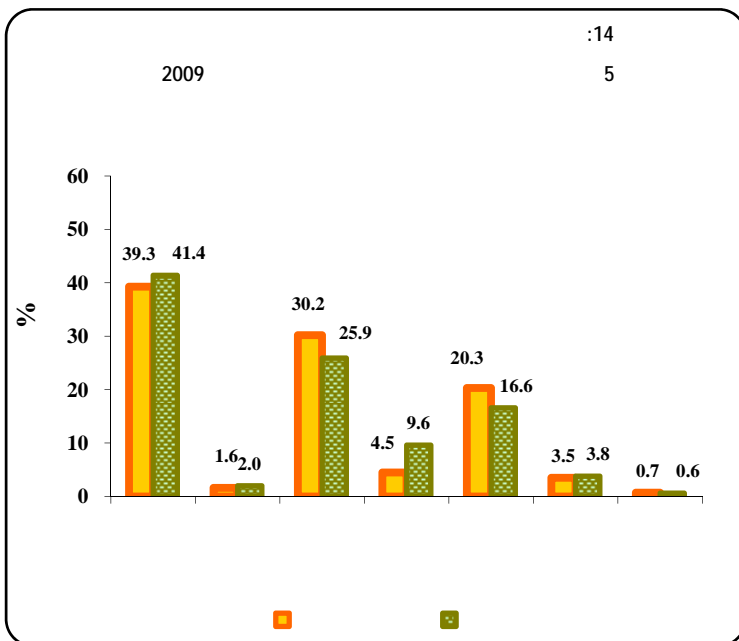
%40

)
%41

%39

(
%28

.%18



(%7)

%5

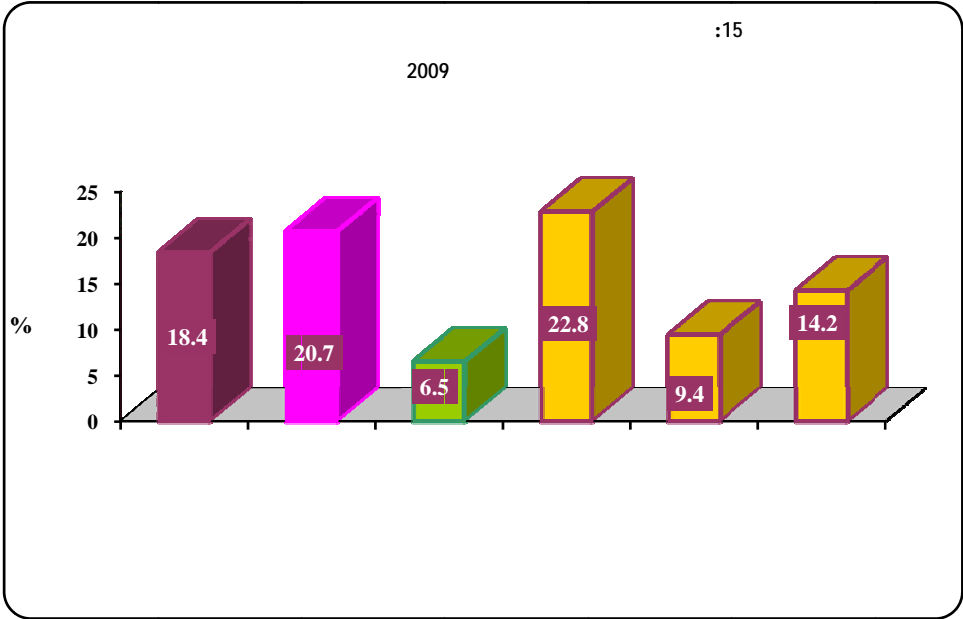
%10

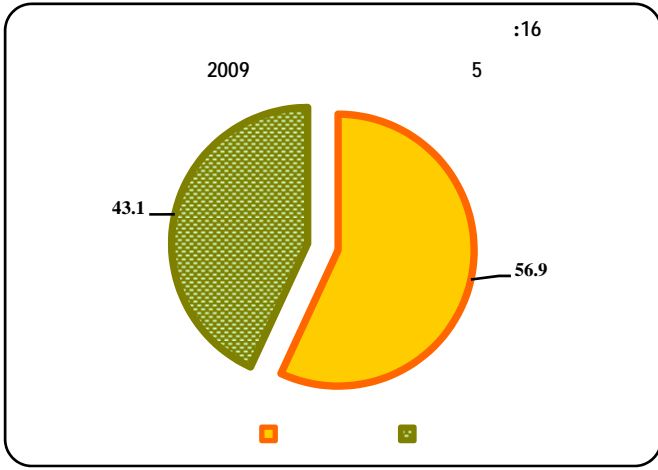
2009

40.4	40.7	35.5	43.1	36.6	41.4	
1.8	3.1	0.6	2.2	1.3	1.9	
27.9	23.6	31.0	26.8	30.8	27.1	
7.3	16.8	8.1	5.3	12.2	6.0	
18.3	11.9	21.5	17.6	16.6	18.8	
3.7	2.3	2.9	4.3	1.5	4.2	
0.6	1.6	0.3	0.6	0.9	0.6	
6087	573	1965	3549	1298	4788	100 =

.4

. %18.4 • %18
%21
%7
%5





%26

5

12

%57

%98

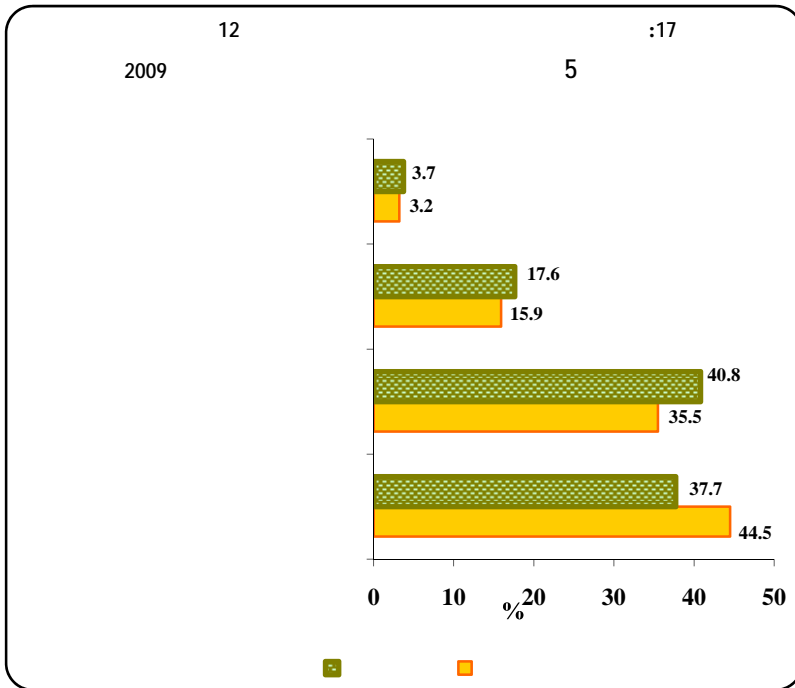
%43

12

%1

%1.2

%.47



%42

5

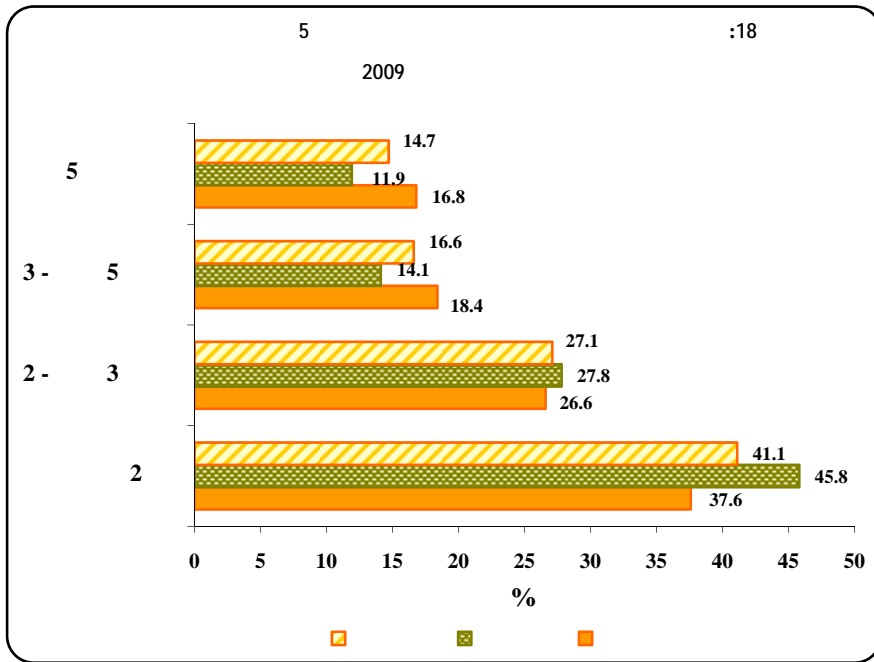
5

%40.8

%.38

%3

%35.5



5

%41

%27

.%15

%17

5

3

ADSL •

%32

%52) %51

ADSL

(%51)

(

.%21

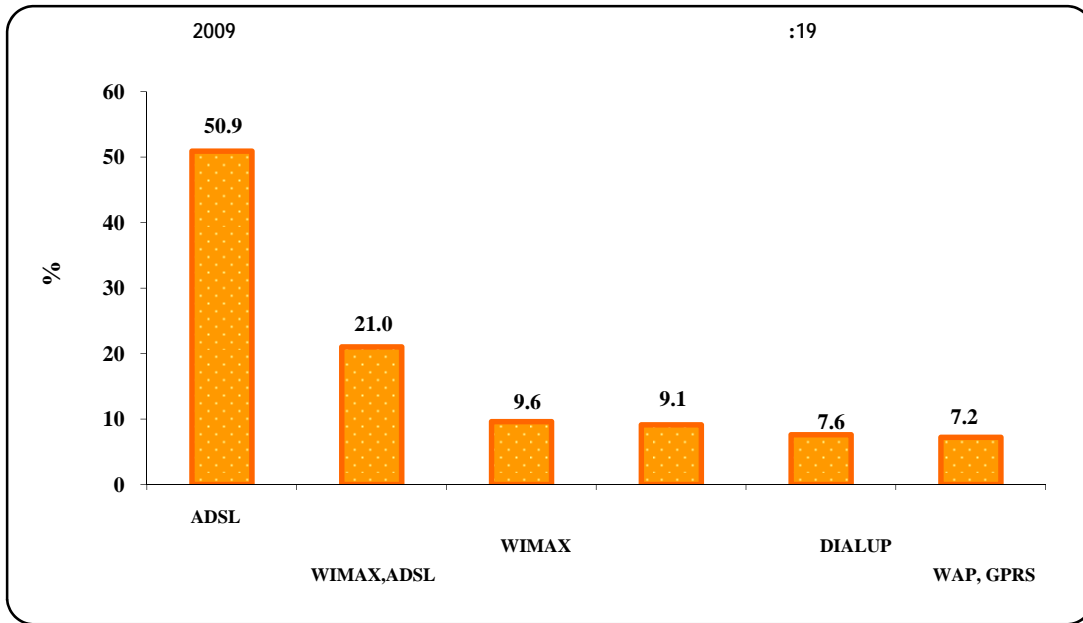
WIMAX, ADSL

WAP, GPRS

WIMAX

%7.2

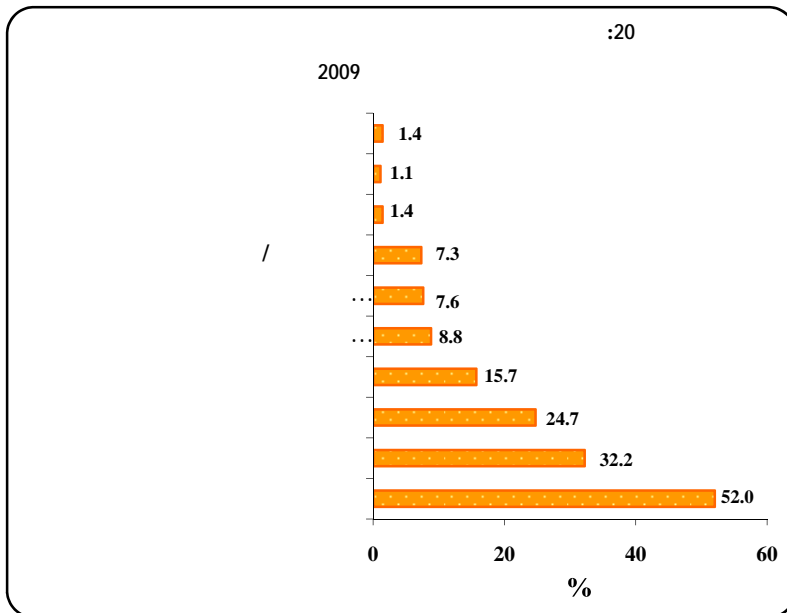
.%10



:11

2009

9.1	9.6	6.0	9.6	9.2	9.1	WIMAX ,ADSL DIALUP ADSL WAP, GPRS WIMAX	
21.0	24.9	33.9	18.4	21.9	21.0		
7.6	4.3	4.8	8.4	12.4	7.3		
50.9	37.5	44.4	53.2	31.7	52.1		
7.2	28.4	10.5	4.8	22.4	6.3		
9.6	23.7	2.9	9.5	2.3	10.0		
557	39	78	440	33	524		



%52.0

%32.2

.%1.1

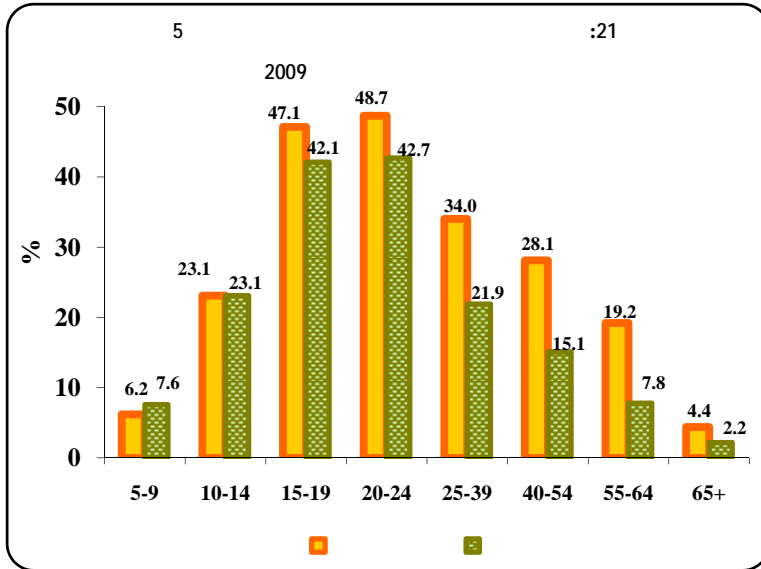
* :12

2009						
7.6	7.4	8.5	7.1	8.0	7.4	(Hardware)
8.8	2.9	15.1	6.6	8.8	8.9	
24.7	30.6	23.5	24.4	25.4	24.6	
15.7	13.7	15.2	16.3	18.9	15.0	
1.1	0.0	2.4	0.7	1.6	1.0	
7.3	7.9	6.6	7.5	4.7	7.9	
52.0	44.1	56.1	51.1	55.7	51.1	
32.2	34.7	33.8	31.0	41.8	30.0	
1.4	0.8	2.8	0.8	3.3	1.0	
1.4	0.2	0.9	1.9	0.8	1.6	
2476	237	752	1488	471	2005	

%100

*

24-15



24-15

24-20

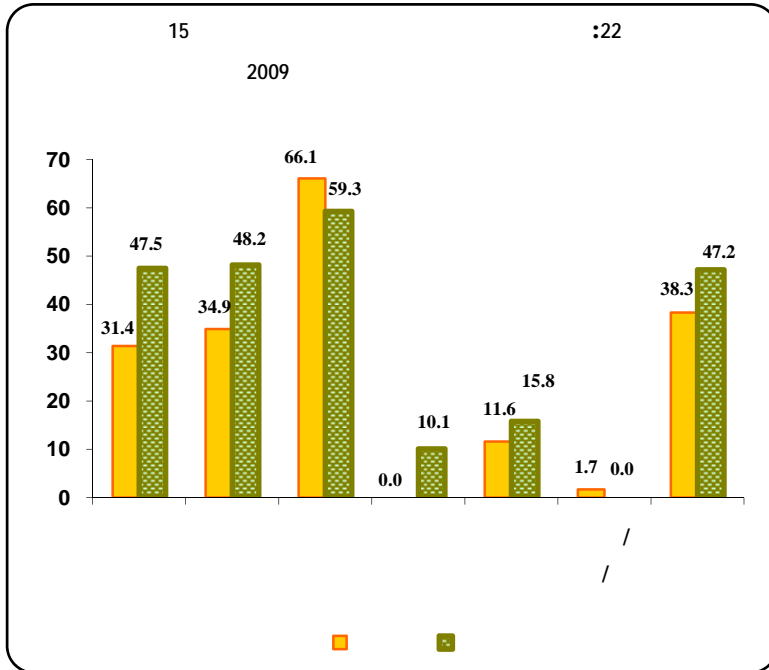
%46

%42.7

%49

19-15

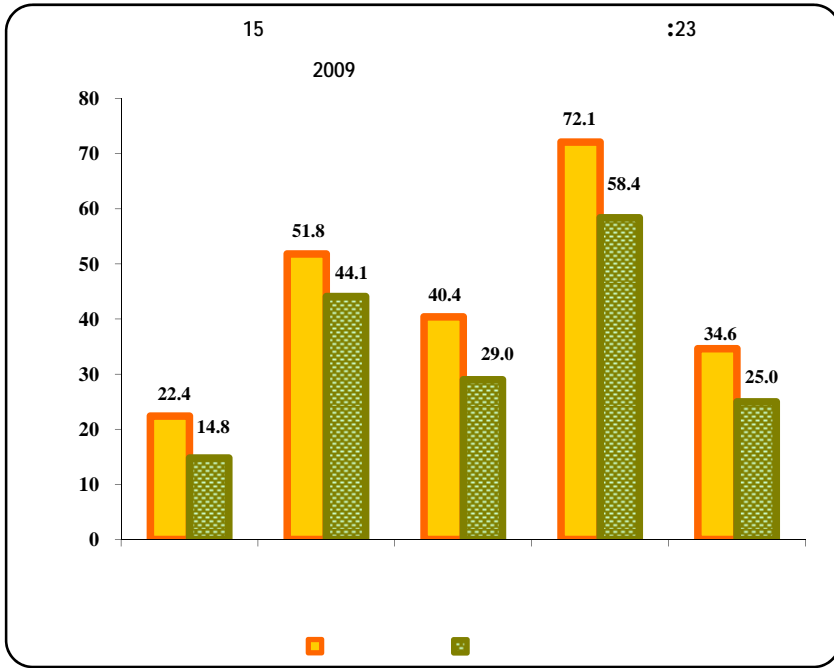
%45



15

(%63)

%39



%66

15

%48

15

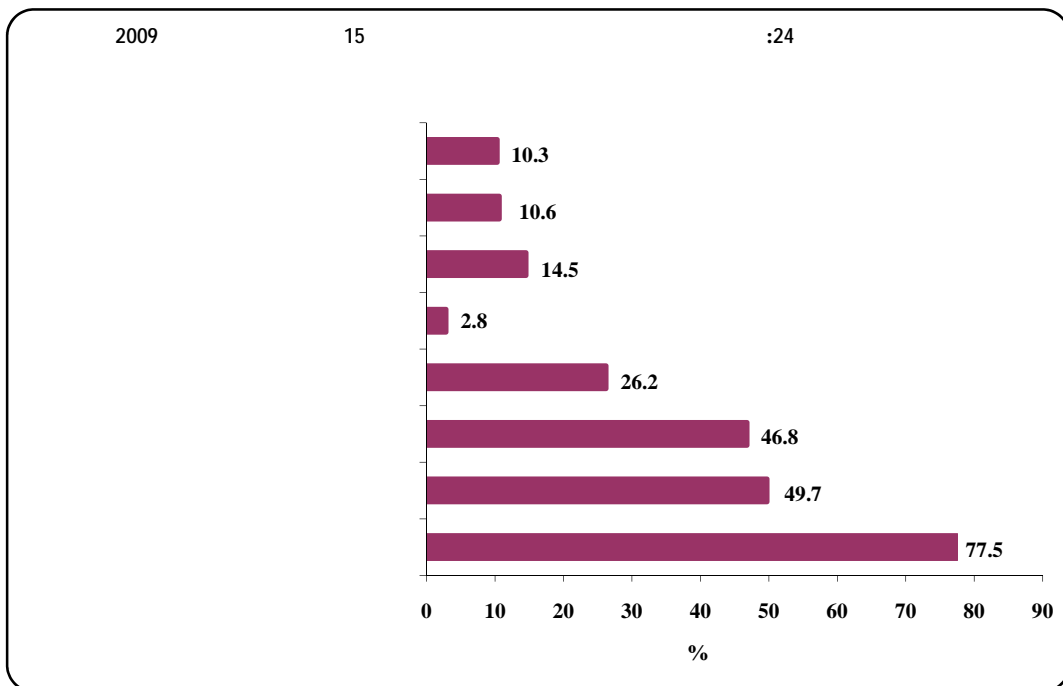
24

%78

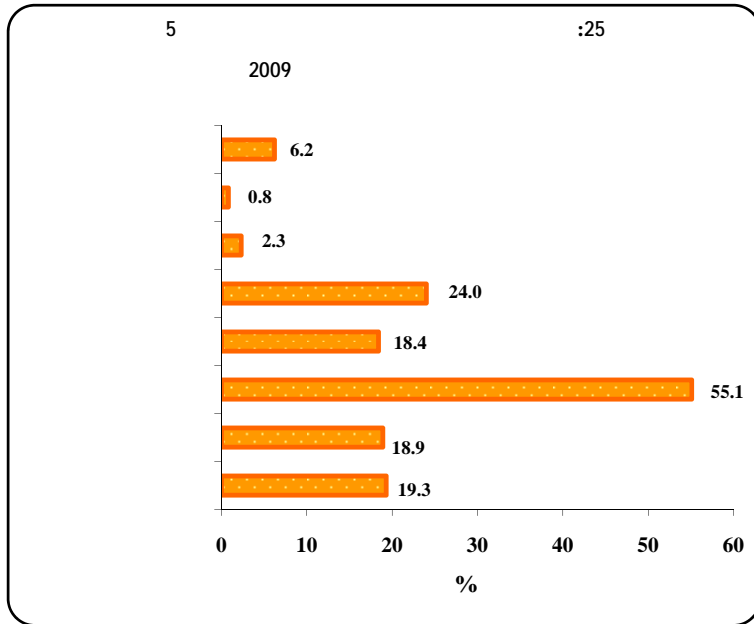
) %50

.(%3)

(%47



(%55)



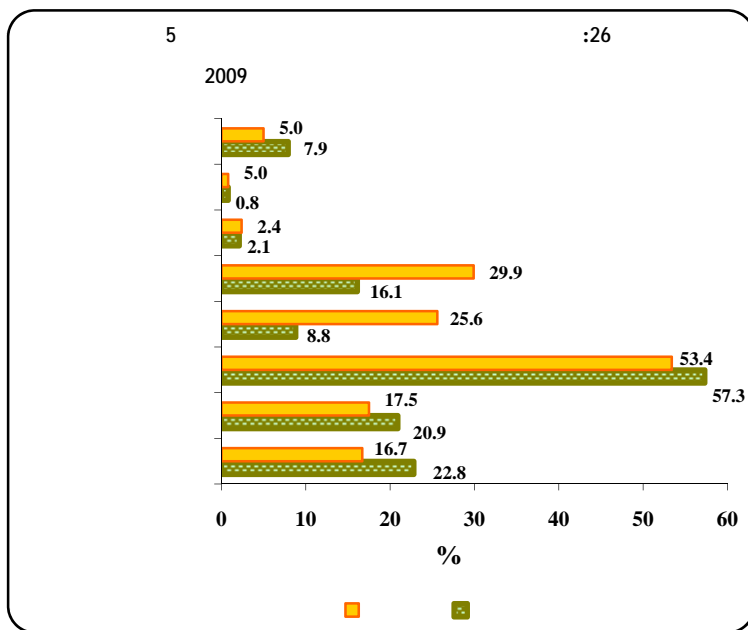
) (%24)

%19

(%18.9)

26

6)



3

4

17

14

2009

55.1	42.9	35.8	62.1	30.5	57.9	
24.0	34.7	20.9	23.6	26.9	23.7	
18.4	15.9	31.7	14.8	23.9	17.8	
19.3	24.1	17.0	19.4	19.5	19.3	
18.9	18.7	27.0	16.7	29.2	17.8	
2.3	4.6	3.8	1.5	6.0	1.8	
0.8	6.3	0.2	0.4	1.4	0.8	
6.2	8.5	6.7	5.8	6.1	6.2	*
2475	288	713	2473	349	3126	

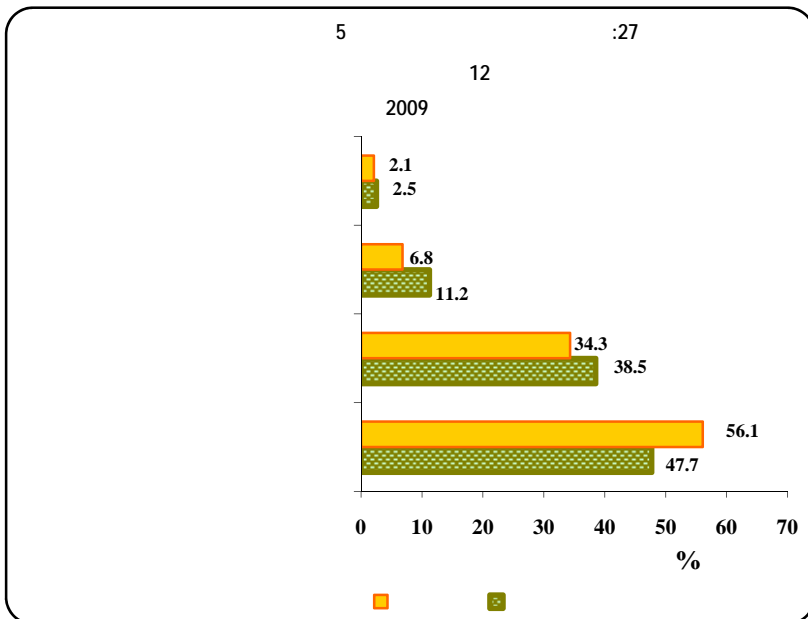
*

(%52)

%52

%56

.%48

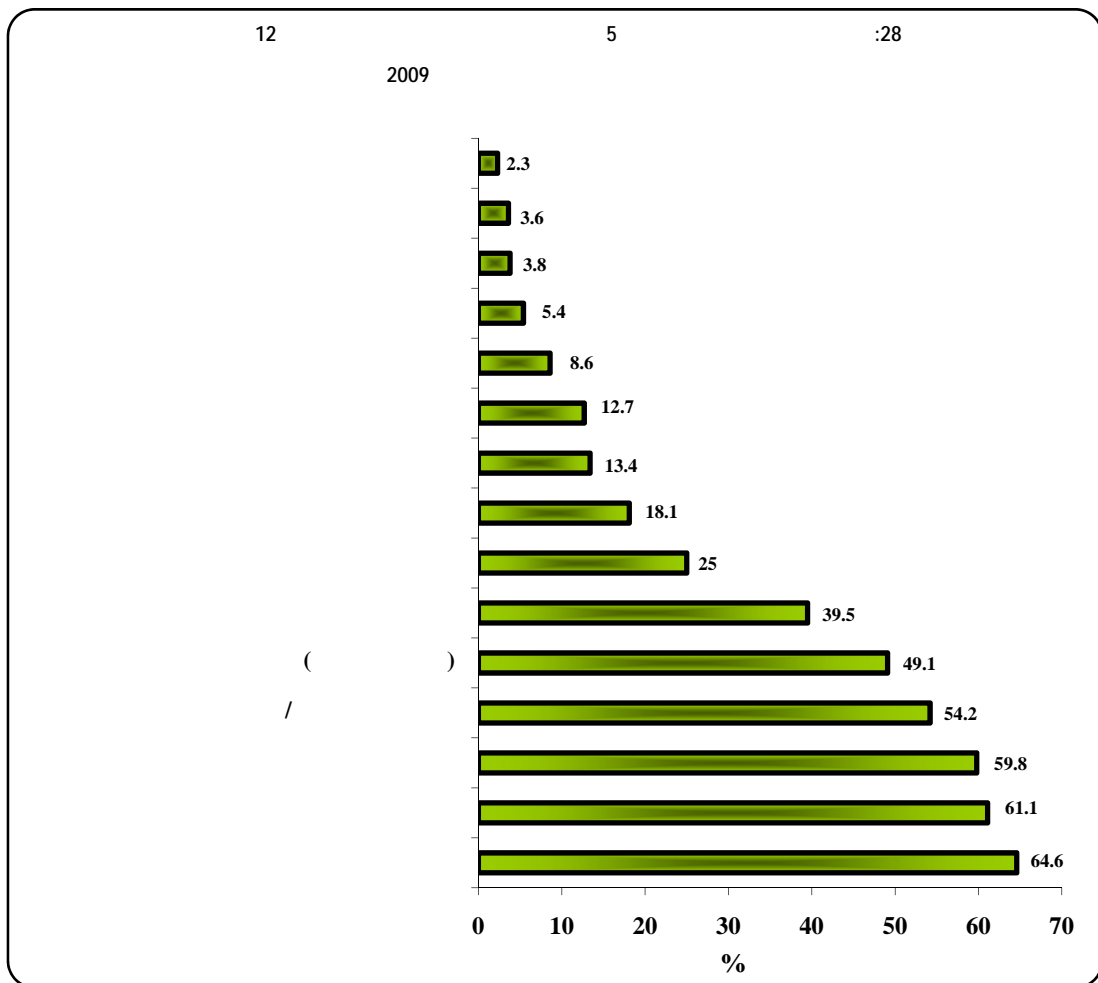


%56

%53

(%65)

(%63 %65) %65 5
(%61) %61
12
%54 %60
.%2



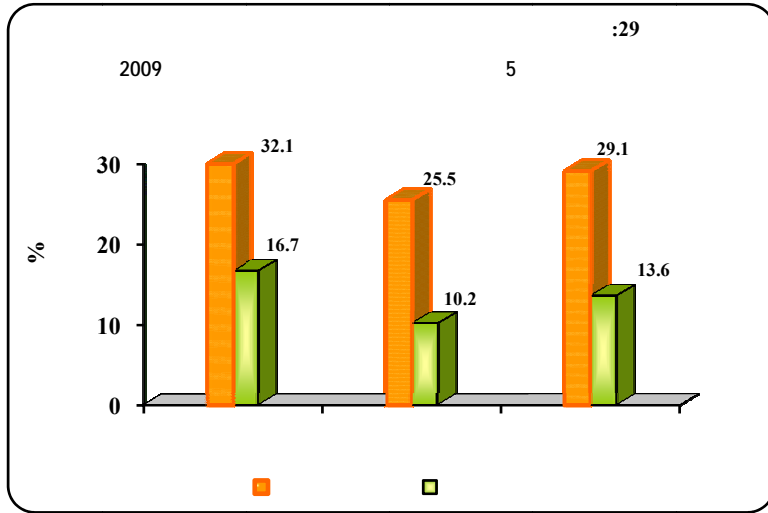
2009

64.6	77.9	60.2	64.3	62.6	64.8	
61.1	71.6	58.6	60.6	63.7	60.8	
54.2	36.0	43.6	59.4	38.3	56.0	/
59.8	61.1	56.2	60.7	55.2	60.3	
49.1	35.4	36.5	54.3	32.9	50.9	()
25.0	32.8	12.2	27.8	23.1	25.2	
39.5	45.5	29.3	41.7	39.2	39.5	
18.1	31.9	20.1	15.9	26.0	17.2	
12.7	18.4	13.6	11.7	13.7	12.6	
13.4	20.0	15.6	12.0	17.5	12.9	
8.6	11.0	4.7	9.5	5.7	8.9	
5.4	3.6	8.6	4.6	5.3	5.4	
3.8	4.2	7.3	2.7	5.2	3.6	
3.6	5.3	1.2	4.1	1.1	3.9	
2.3	5.8	0.4	2.4	1.1	2.4	/
3475	288	713	2473	349	3126	

%100

*

5. البريد الإلكتروني



%26.9

5

%13.6

%29.1

%.57

) 39-25

%24

24-20

(%47)

(%29

%.5

55

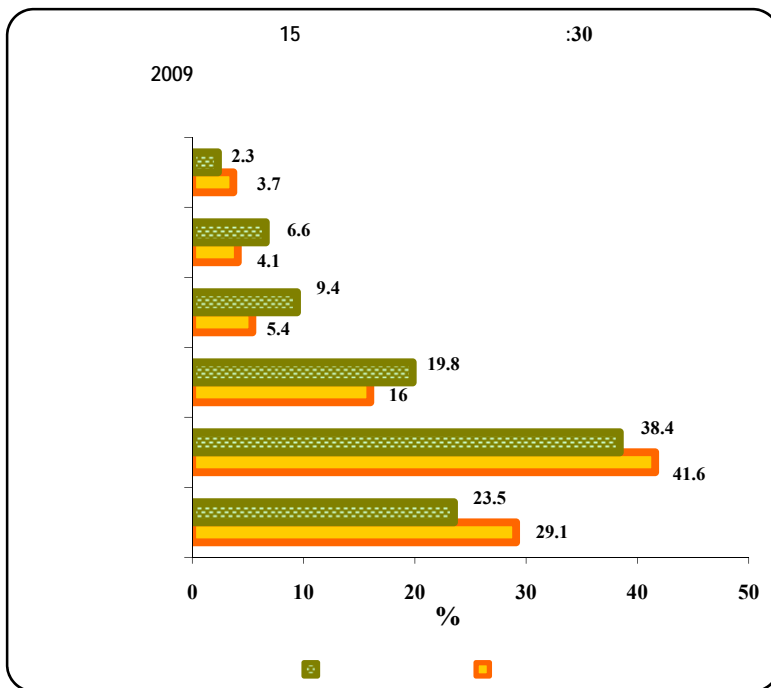
(%30)

5

:15

2009

2009						
0.8	0.6	1.5	0.7	0.9	0.8	9-5
6.4	1.5	6.0	7.0	4.0	6.6	14-10
20.0	17.6	21.4	19.9	17.5	20.2	19-15
24.2	23.3	30.2	23.0	31.8	23.6	24-20
29.4	46.5	30.6	27.7	36.3	28.9	39-25
14.4	10.5	7.9	16.1	7.5	14.9	54-40
3.8	0.0	2.4	4.4	1.4	4.0	64-55
0.9	0.0	0.0	1.2	0.7	0.9	+65
1980	126	324	1530	143	1837	100 =



%67

) %27

.(

%40

15

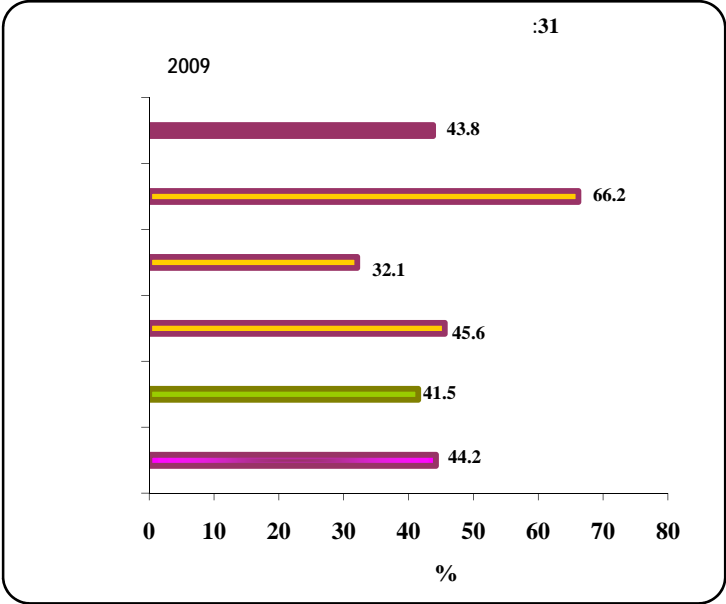
:16

2009

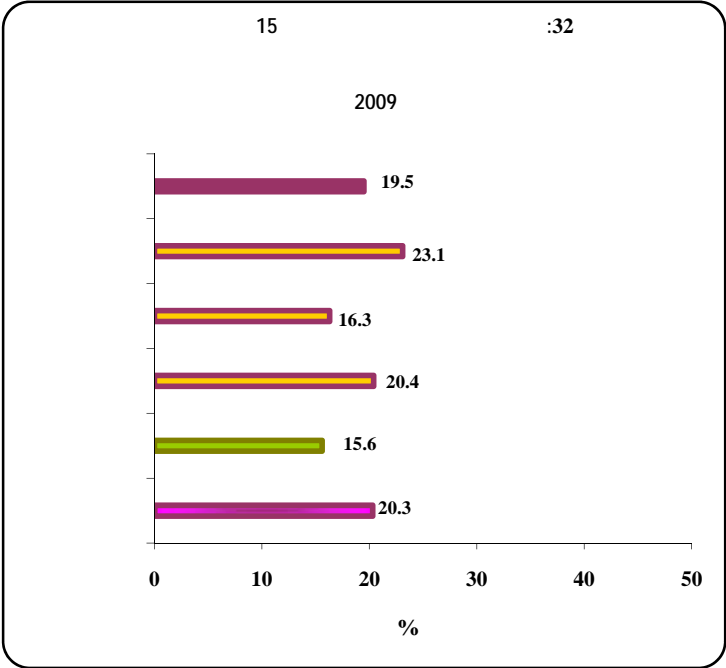
26.9	40.1	20.9	27.0	17.8	27.6	
40.4	29.3	38.5	41.7	35.8	40.7	
17.5	20.0	18.7	17.0	25.0	16.9	
7.0	5.0	5.7	7.5	7.5	7.0	
5.1	3.6	9.1	4.4	8.7	4.8	
3.1	2.1	7.1	2.4	5.1	3.0	
1849	126	302	1421	136	1713	100=

.6

15



%44



%20

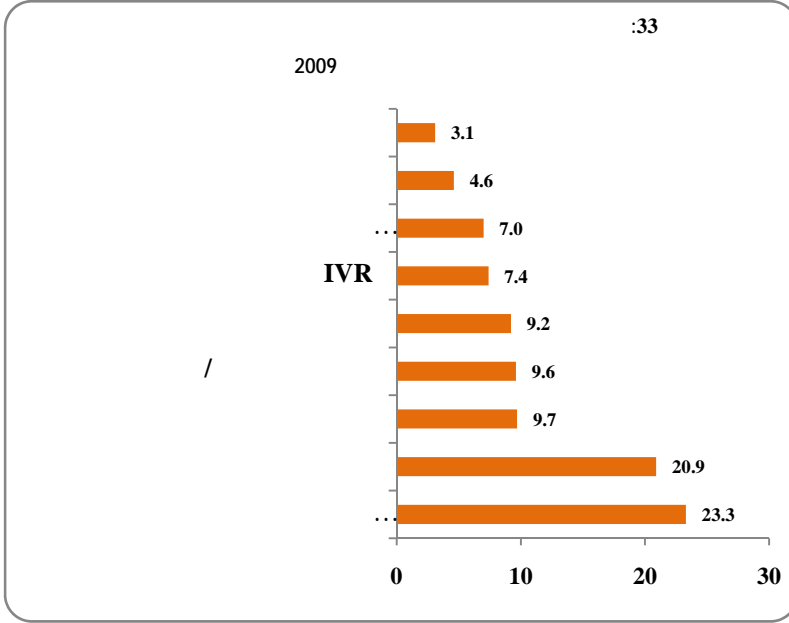
%15.6

15

(%20.3)

(
.%23

(%23)



%5

* :17

2009

23.3	34.8	16	24.7	20.9	23.7	/
20.9	26.1	12.9	23.6	15.8	21.9	
9.7	16.9	7.6	9.5	11.5	9.3	
9.6	18.8	3.2	11	7.9	9.9	
7.0	16.7	6.7	5.7	12.0	6.0	
7.4	17.3	3.5	7.6	7.3	7.4	
9.2	25.7	5.3	8.4	11.5	8.7	
4.6	10.7	1.9	4.9	5.6	4.4	
3.1	9.2	1.4	3.0	3.4	3.1	
3033	276	829	1928	504	2529	

%100

*

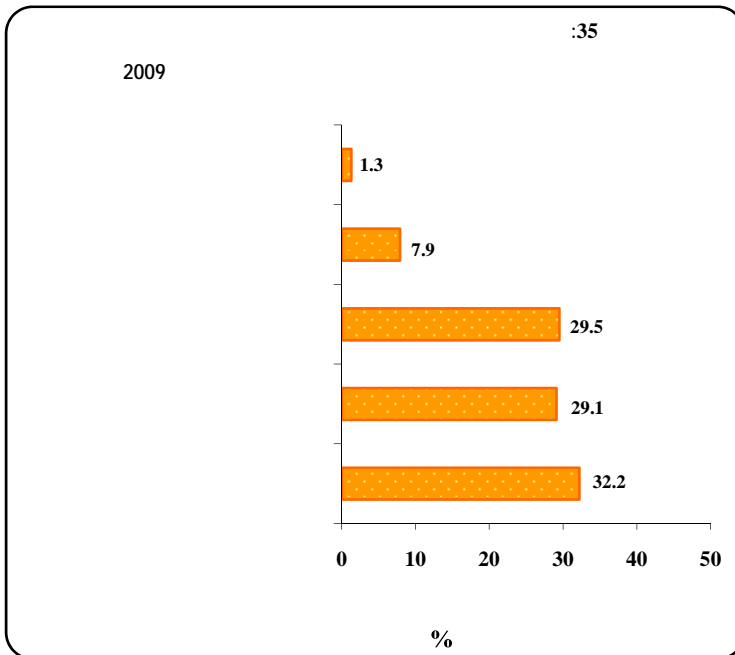
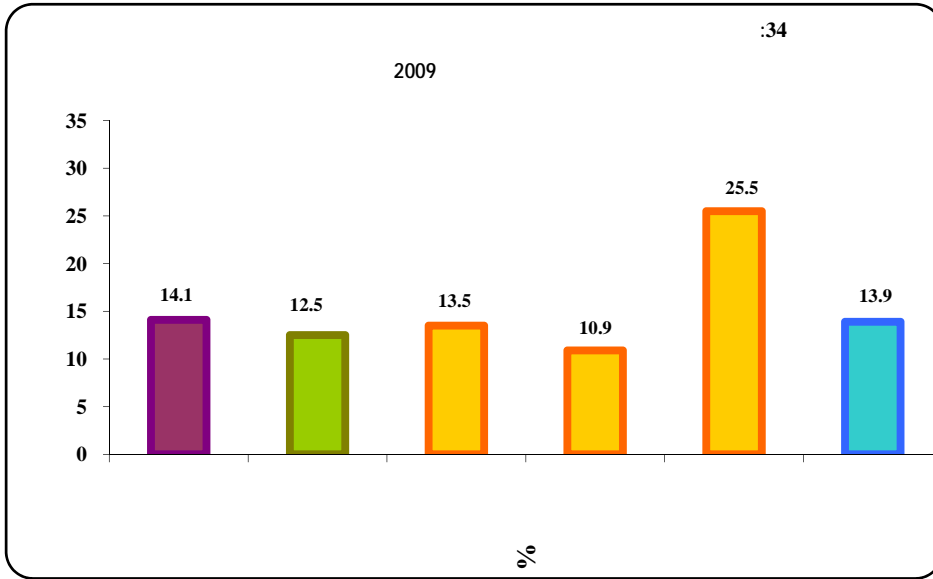
%14



%14

%13.9

%13



%32.5

%12.5

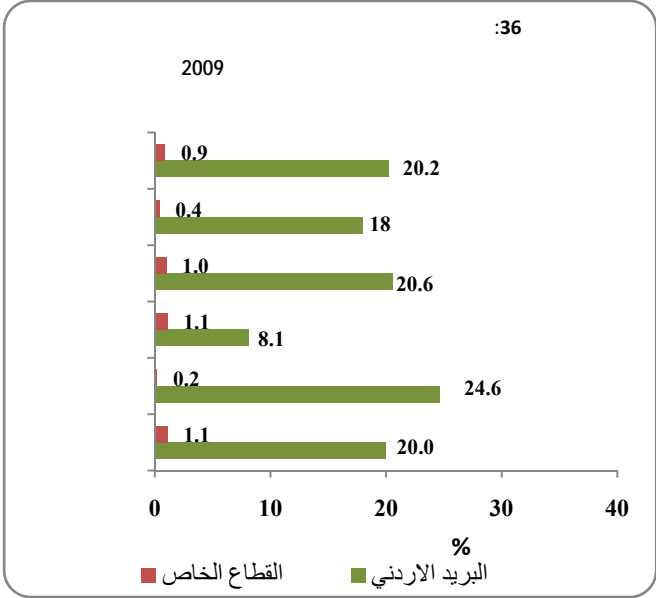
%.8

2009

29.5	34.2	18.6	32.0	12.5	32.5	
7.9	3.1	6.4	9.8	6.2	8.2	
32.1	33.8	29.5	32.6	45.4	29.8	
29.1	26.8	45.5	24.0	35.9	27.9	
1.3	2.1	0.0	1.6	0.0	1.6	
420	71	91	259	63	357	100 =

.7

%1



%20

%1

%25)

(

10

12

12)

11

12

(

7

5

2009

9.6	9.5	9.5	9.7	9.6	9.6		
11.4	8.0	5.6	12.3	6.5	11.6		
4.7	6.8	5.1	4.3	7.8	4.5		
2.4	3.7	2.0	2.2	3.0	2.4		
2.4	2.9	1.0	2.4	1.0	2.4		
							البريد الأردني
9.6	9.4	9.5	9.6	9.6	9.6		
11.5	7.8	5.6	12.4	6.5	11.7		
4.6	6.7	5.1	4.3	7.8	4.5		
2.4	3.6	2.0	2.2	3.0	2.3		
2.3	1.9	1.0	2.4	1.0	2.4		
							شركات القطاع الخاص
8.9	11.9	4.8	8.8	8.7	8.9		
7.6	7.7	1.0	8.0	1.0	7.9		
5.1	5.9	1.0	5.3	0.0	5.1		
4.6	6.3	0.0	3.8	4.0	4.7		
2.9	5.5	0.0	2.4	0.0	2.9		

%12

%15.3

1000

600

%24

: 20

2009 ()

	()							/
	+1000	-600 999	-400 599	-300 399	-200 299	-100 199	100	
2529	186	271	595	538	585	315	39	
29.0	70.0	43.7	41.0	18.6	16.6	13.1	9.7	
96.8	100.0	100.0	98.6	98.8	97.0	88.8	69.0	
45.8	75.8	66.1	62.6	46.0	29.8	12.4	15.3	
12.9	56.5	23.7	17.4	6.3	2.2	2.2	0.0	
10.8	38.3	21.3	14.6	7.0	2.8	1.0	0.0	
4.3	20.7	10.7	5.2	1.6	0.3	0.0	0.0	
503	12	45	91	126	123	84	22	
10.8	50.2	18.2	15.9	12.5	5.0	3.6	4.7	
94.7	100.0	100.0	100.0	97.2	97.3	89.3	53.5	
28.1	81.7	47.1	44.9	32.0	19.3	0.6	2.2	
3.7	46.3	11.8	3.4	2.4	1.5	0.0	0.0	
4.7	44.2	8.4	8.7	2.3	2.7	0.7	0.0	
1.5	19.4	0.0	3.0	0.6	1.6	0.0	0.0	
3032	198	316	686	665	707	399	61	
26.0	68.8	40.0	37.6	17.4	14.6	11.1	7.9	
96.5	100.0	100.0	98.8	98.5	97.0	88.9	63.5	
42.9	76.2	63.3	60.3	43.3	28.0	11.0	10.6	
11.4	55.9	22.0	15.5	5.6	2.1	1.7	0.0	
9.8	38.7	19.5	13.8	6.1	2.8	1.0	0.0	
3.8	20.6	9.2	4.9	1.4	0.5	0.0	0.0	

ADSL

WIMAX ,ADSL

999-600

%21

WAP, GPRS

:21

2009

	()						
	+1000	-600 999	-400 599	-300 399	-200 299	-100 199	
9.1	7.4	14.2	8.8	6.8	3.9	16.5	
21.0	21.5	7.8	18.5	33.3	39.7	24.0	WIMAX ,ADSL
7.6	9.4	10.2	7.6	4.2	0.0	13.7	DIALUP
50.9	55.8	53.7	52.4	42.9	45.8	25.1	ADSL
7.2	9.2	8.1	4.8	10.0	4.6	10.2	WAP, GPRS
9.6	8.5	9.5	10.2	12.0	6.0	10.4	WIMAX
557	130	107	191	69	43	15	

3 100

100

8

9

35

999-600

.(

36

35

)

.

200

3

100

.

2009 ()

	()							
	+1000	-600 999	-400 599	-300 399	-200 299	-100 199	100	
2529	186	271	595	538	585	315	39	
18.3	28.8	18.4	18.0	13.8	12.9	10.1	9.7	
24.7	62.8	34.5	29.1	19.6	15.4	10.9	8.5	
19.9	29.5	20.6	19.1	14.4	15.7	15.9	16.7	
4.9	5.1	9.0	3.8	5.1	3.8	2.5	3.2	
27.0	32.3	5.0	29.9	4.5	17.4	22.0	0.0	
503	12	45	91	126	123	84	22	
11.7	24.3	9.5	15.5	7.9	8.8	7.9	6.0	
19.6	51.0	36.0	23.3	17.8	15.3	12.3	5.7	
16.1	27.9	17.6	15.0	12.6	13.3	13.0	3.0	
6.5	90.0	5.1	2.3	3.2	5.8	2.0	0.0	
10.7	0.0	0.0	0.0	20.0	0.0	0.0	1.0	
3032	199	316	686	665	707	399	61	
17.8	28.7	17.8	17.8	13.0	12.6	9.9	8.9	
23.9	62.1	34.7	28.3	19.2	15.4	11.2	7.7	
19.8	29.4	20.3	18.8	14.2	15.4	15.7	14.7	
5.0	6.1	8.7	3.7	4.9	4.0	2.5	3.2	
26.1	32.3	5.0	29.9	10.5	17.4	22.0	1.0	

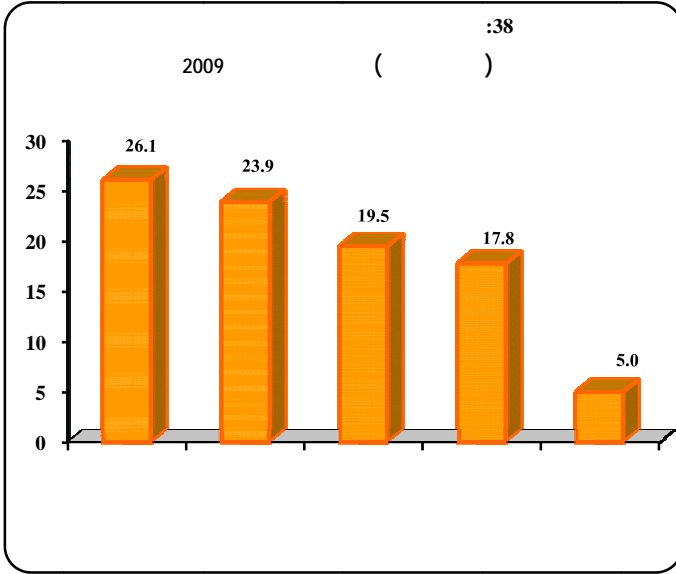
9

24

26

20

18



26
(11 27)
24
20
16

()

:23

2009

17.8	14.5	11.1	19.3	11.7	18.3	
23.9	23.4	19.9	25.6	19.6	24.7	
19.5	18.7	15.8	20.9	16.1	19.9	
5.0	8.0	3.0	5.3	6.5	4.9	
26.1	31.6	0.0	24.5	10.7	27.0	

%39

19 10 (%43)

49 20

49 20

19-10

%40

.(%42)

%.24

19-10

%48

49 20

10

%86

49 20

: 24

2009 ()

17.2	14.9	15.3	43.9	21.3	22.9	9-1
42.3	32.4	34.0	40.4	43.3	43.1	19-10
33.0	39.7	38.6	11.7	31.2	29.9	49-20
6.0	10.0	9.4	1.8	2.9	2.8	99-50
0.9	2.6	2.3	0.0	0.6	0.6	+100
0.5	0.4	0.4	2.1	0.5	0.6	
476	2445	2921	53	729	782	100 =

:25

2009 ()

20.0	86.2	28.4	22.7	23.2		9-1
5.2	7.2	32.7	22.6	23.5		19-10
40.4	2.6	31.7	49.5	47.9		49-20
11.2	0.2	5.2	2.5	2.8		99-50
0.0	0.0	0.0	0.8	0.7		+100
23.2	3.8	2.0	1.9	1.9		
38	286	82	813	894		100 =

10. مؤشرات 2008-2009

	2009	2008	
:			
-15.3	26.0	30.7	()
2.4	96.5	94.2	()
38.2	54.3	39.3	
-85.7	0.2	1.4	
:			
-1.1	54.5	55.1	
6.1	15.6	14.7	
9.7	46.2	42.1	
-48.8	2.2	4.3	
:			
-68.8	9.1	29.2	
-23.4	7.2	9.4	WAP, GPRS
585.7	9.6	1.4	WIMAX
-0.6	50.9	51.2	ADSL
:			
-29.0	7.6	10.7	
-21.4	8.8	11.2	
-36.5	24.7	38.9	
-32.9	15.7	23.4	
175.0	1.1	0.4	
-1.4	7.3	7.4	/
195.5	52.0	17.6	
302.5	32.2	8.0	
-58.8	1.4	3.4	

	2009	2008	
:			
-25.1	20.9	27.9	/ IVR
-24.4	23.3	30.8	
-62.5	9.6	25.6	
-66.5	7.4	22.1	
-58.0	9.2	21.9	
-54.4	3.1	6.8	
-62.8	9.7	26.1	
-69.7	7.0	23.1	
-41.0	4.6	7.8	
:			
-4.8	17.8	18.7	
-4.8	23.9	25.1	
10.2	19.5	17.7	
-12.3	5.0	5.7	
107.1	26.1	12.6	
:			
-1.0	9.6	9.7	12
17.5	11.4	9.7	12
-53.0	4.7	10.0	12
-35.1	2.4	3.7	12
-36.8	2.4	3.8	12

	2009	2008	
:			
-11.6	29.0	32.8	()
2.7	96.8	94.3	()
41.1	58.7	41.6	
-86.7	0.2	1.5	
:			
-1.1	52.4	53.0	
8.9	15.9	14.6	
9.6	47.8	43.6	
-42.2	2.6	4.5	
:			
-66.5	9.1	27.2	
-28.4	6.3	8.8	WAP, GPRS
525.0	10.0	1.6	WIMAX
-1.3	52.1	52.8	ADSL
:			
-35.1	7.4	11.4	
-4.3	8.9	9.3	
-34.7	24.6	37.7	
-35.9	15.0	23.4	
233.3	1.0	0.3	
9.7	7.9	7.2	/
179.2	51.1	18.3	
294.7	30.0	7.6	
-51.5	1.6	3.3	

	2009	2008	
:			
-25.3	21.9	29.3	IVR
-23.8	23.7	31.1	
-61.2	9.9	25.5	
-66.4	7.4	22.0	
-61.5	8.7	22.6	
-55.7	3.1	7.0	
-64.6	9.3	26.3	
-73.8	6.0	22.9	
-42.5	4.6	8.0	
:			
-4.2	18.3	19.1	
-2.8	24.7	25.4	
8.7	19.9	18.3	
-15.5	4.9	5.8	
110.9	27.0	12.8	
:			
-2.0	9.6	9.8	12
14.9	11.6	10.1	12
-57.5	4.5	10.6	12
-36.8	2.4	3.8	12
-36.8	2.4	3.8	12

	2009	2008	
			:
-45.5	10.8	19.8	()
0.3	94.7	94.4	()
17.3	31.8	27.1	
-100.0	0.0	0.6	
			:
-2.0	62.3	63.6	
-1.4	14.6	14.8	
15.6	40.8	35.3	
-80.6	0.7	3.6	
			:
-83.9	9.2	57.1	
25.1	22.4	17.9	WAP, GPRS
****	2.3	0.0	WIMAX
10.8	31.7	28.6	ADSL
			:
6.7	8.0	7.5	
-55.8	8.8	19.9	
-42.9	25.4	44.5	
-19.2	18.9	23.4	
128.6	1.6	0.7	
-42.7	4.7	8.2	/
286.8	55.7	14.4	
313.9	41.8	10.1	
-80.5	0.8	4.1	

	2009	2008	
:			
-23.3	15.8	20.6	IVR
-28.7	20.9	29.3	
-69.5	7.9	25.9	
-68.0	7.3	22.8	
-38.8	11.5	18.8	
-41.4	3.4	5.8	
-54.2	11.5	25.1	
-50.4	12.0	24.2	
-17.6	5.6	6.8	
:			
-37.4	11.7	18.7	
-16.9	19.6	23.6	
62.6	16.1	9.9	
27.5	6.5	5.1	
13.8	10.7	9.4	
:			
2.1	9.6	9.4	12
20.4	6.5	5.4	12
66.0	7.8	4.7	12
76.5	3.0	1.7	12
-66.7	1.0	3.0	12

/2009-2008

	2009	2008	
2.8	54.8	53.3	:
:			
11.9	52.6	47.0	9-5
6.9	84.1	78.7	14-10
-0.2	82.2	82.4	19-15
-4.4	65.2	68.2	24-20
-0.8	47.3	47.7	39-25
9.4	36.1	33.0	54-40
19.5	20.2	16.9	64-55
9.1	6.0	5.5	+65
: 12			
7.6	17.0	15.8	
9.3	84.6	77.4	
-8.6	53.1	58.1	
:			
-29.2	40.4	57.1	
-69.0	1.8	5.8	
40.2	27.9	19.9	
-28.4	7.3	10.2	
-50.0	0.6	1.2	
19.4	25.8	21.6	
: 12			
17.9	41.5	35.2	
12.2	37.8	33.7	
-11.7	16.6	18.8	
-55.3	3.4	7.6	
-50.0	0.7	1.4	

/2009-2008

	2009	2008	
			: 12
32.1	55.1	41.7	
-6.6	24.0	25.7	
-34.1	18.4	27.9	
-17.5	38.2	46.3	
-34.3	2.3	3.5	
-73.3	0.8	3.0	
-43.1	6.2	10.9	
			: 12
4.9	8.6	8.2	
59.9	39.5	24.7	
-8.6	12.7	13.9	
-91.5	5.4	63.9	
3.8	54.2	52.2	
15.0	49.1	42.7	
-30.9	3.8	5.5	
-4.6	25.0	26.2	
-34.3	2.3	3.5	
-10.0	3.6	4.0	
-11.3	18.1	20.4	
11.7	13.4	12.0	
20.3	59.8	49.7	
9.5	64.6	59.0	
9.1	61.1	56.0	

/2009-2008

	2009	2008	
5.0	56.9	54.2	:
			: 12
8.7	17.4	16.0	
9.8	86.5	78.8	
-8.5	51.9	56.7	
			:
-27.1	41.4	56.8	
-69.4	1.9	6.2	
37.6	27.1	19.7	
-36.2	6.0	9.4	
-53.8	0.6	1.3	
23.1	28.2	22.9	
			: 12
19.1	43.7	36.7	
11.1	37.0	33.3	
-14.8	15.5	18.2	
-56.9	3.1	7.2	
-53.8	0.6	1.3	

/2009-2008

	2009	2008	
			: 12
31.9	57.9	43.9	
-7.4	23.7	25.6	
-38.4	17.8	28.9	
-17.6	37.1	45	
-50.0	1.8	3.6	
-70.4	0.8	2.7	
-43.1	6.2	10.9	
			: 12
-1.1	8.9	9.0	
58.6	39.5	24.9	
-10.6	12.6	14.1	
-91.5	5.4	63.3	
2.0	56.0	54.9	
13.4	50.9	44.9	
-37.9	3.6	5.8	
-1.9	25.2	25.7	
-38.5	2.4	3.9	
-18.2	3.6	4.4	
-14.4	17.2	20.1	
4.0	12.9	12.4	
20.1	60.3	50.2	
8.5	64.8	59.7	
8.0	60.8	56.3	

/2009-2008

	2009	2008	
-8.4	44.8	48.9	:
			: 12
2.1	14.9	14.6	
4.4	73.3	70.2	
-6.5	60.9	65.1	
			:
-37.3	36.6	58.4	
-67.5	1.3	4.0	
50.2	30.8	20.5	
-11.6	12.2	13.8	
-18.2	0.9	1.1	
-1.3	14.9	15.1	
			: 12
-9.2	21.7	23.9	
19.1	44.2	37.1	
16.2	26.6	22.9	
-41.9	6.1	10.5	
-22.2	1.4	1.8	

/2009-2008

	2009	2008	
			: 12
18.7	30.5	25.7	
1.1	26.9	26.6	
14.4	23.9	20.9	
-13.3	48.7	56.2	
140.0	6.0	2.5	
-68.9	1.4	4.5	
-43.0	6.1	10.7	
			: 12
103.6	5.7	2.8	
66.1	39.2	23.6	
8.7	13.7	12.6	
-92.2	5.3	68.1	
16.4	38.3	32.9	
22.3	32.9	26.9	
92.6	5.2	2.7	
-22.5	23.1	29.8	
83.3	1.1	0.6	
-26.7	1.1	1.5	
15.0	26.0	22.6	
101.1	17.5	8.7	
19.2	55.2	46.3	
16.6	62.6	53.7	
19.3	63.7	53.4	

/2009-2008

	2009	2008	
3.9	58.8	56.6	:
:			
9.0	55.6	51.0	9-5
7.9	84.4	78.2	14-10
1.1	80.7	79.8	19-15
0.3	66.8	66.6	24-20
-0.2	52.5	52.6	39-25
10.4	46.6	42.2	54-40
1.0	29.7	29.4	64-55
-11.0	8.1	9.1	+65
: 12			
8.7	22.5	20.7	
6.9	84.9	79.4	
-7.6	50.2	54.3	
نسبة الأفراد الذين لا يستخدمون الحاسوب بسبب:			
-32.9	39.3	58.6	
-71.4	1.6	5.6	
39.8	30.2	21.6	
-33.8	4.5	6.8	
-36.4	0.7	1.1	
18.2	29.2	24.7	
: 12			
19.9	44.5	37.1	
8.2	35.5	32.8	
-12.2	15.9	18.1	
-55.6	3.2	7.2	
-47.4	1.0	1.9	

/2009-2008

	2009	2008	
			12
29.6	53.4	41.2	
-3.2	29.9	30.9	
-33.3	25.6	38.4	
-14.5	34.1	39.9	
-31.4	2.4	3.5	
-75.8	0.8	3.3	
-59.0	5.0	12.2	
			12
1.8	11.3	11.1	
65.5	37.4	22.6	
2.9	14.4	14.0	
-92.6	4.9	66.1	
0.7	58.2	57.8	
9.4	52.3	47.8	
-20.0	4.0	5.0	
-4.1	23.4	24.4	
-26.7	3.3	4.5	
4.2	5.0	4.8	
-10.5	20.5	22.9	
10.8	15.4	13.9	
16.0	63.2	54.5	
7.7	66.0	61.3	
10.9	64.1	57.8	

/2009-2008

	2009	2008	
1.6	50.6	49.8	:
:			
15.1	49.5	43.0	9-5
5.8	83.7	79.1	14-10
-1.3	84.0	85.1	19-15
-9.3	63.6	70.1	24-20
0.0	42.2	42.2	39-25
6.6	25.9	24.3	54-40
140.9	10.6	4.4	64-55
153.3	3.8	1.5	+65
:		12	
7.1	10.6	9.9	
12.3	84.2	75	
-9.4	56.7	62.6	
:			
-25.8	41.4	55.8	
-67.2	2.0	6.1	
41.5	25.9	18.3	
-28.4	9.6	13.4	
-57.1	0.6	1.4	
22.4	22.4	18.3	
:		12	
16.4	37.7	32.4	
16.2	40.8	35.1	
-10.7	17.6	19.7	
-54.3	3.7	8.1	
-57.1	0.3	0.7	

/2009-2008

	2009	2008	
			:
			12
35.1	57.3	42.4	
-11.5	16.1	18.2	
-31.3	8.8	12.8	
-21.3	43.7	55.5	
-41.7	2.1	3.6	
-68.0	0.8	2.5	
-11.2	7.9	8.9	
			:
			12
21.4	5.1	4.2	
52.3	42.2	27.7	
-23.4	10.5	13.7	
-90.1	6	60.8	
10.9	49	44.2	
26.8	44.9	35.4	
-43.5	3.5	6.2	
-5.2	27.2	28.7	
-57.1	0.9	2.1	
-39.3	1.7	2.8	
-11.3	14.9	16.8	
17.4	10.8	9.2	
29.0	55.2	42.8	
12.6	62.7	55.7	
7.1	57.2	53.4	

/2009-2008

	2009	2008	
:			
-3.4	42.8	44.3	
2.3	65.9	64.4	
-2.2	61.9	63.3	
-3.8	84.2	87.5	
:			
26.0	18.9	15.0	
16.5	47.9	41.1	
16.6	33.8	29.0	
2.0	65.9	64.6	
:			
26.6	34.3	27.1	
10.8	38.9	35.1	
5.0	62.7	59.7	
55.4	10.1	6.5	
47.5	11.8	8.0	
-12.5	1.4	1.6	/ /
50.0	39.6	26.4	
:			
3.7	77.5	74.7	
31.1	49.7	37.9	
9.1	46.8	42.9	
33.7	26.2	19.6	
75.0	2.8	1.6	
95.9	14.5	7.4	
51.4	10.6	7.0	
-8.0	10.3	11.2	

/2009-2008

	2009	2008	
:			
-1.7	46.3	47.1	
4.4	68.8	65.9	
-5.9	65.6	69.7	
-1.6	87.8	89.2	
:			
32.5	22.4	16.9	
18.8	51.8	43.6	
10.7	40.4	36.5	
2.6	72.1	70.3	
:			
27.6	31.4	24.6	
2.6	34.9	34.0	
7.3	66.1	61.6	
-100.0	0.0	26.9	
43.2	11.6	8.1	
-10.5	1.7	1.9	/ /
47.9	38.3	25.9	
:			
0.9	78.7	78.0	
25.7	48.4	38.5	
14.7	46.7	40.7	
45.9	26.7	18.3	
61.1	2.9	1.8	
93.4	14.7	7.6	
50.0	10.5	7.0	
-6.0	12.6	13.4	

/2009-2008

	2009	2008	
:			
-5.4	38.6	40.8	
0.0	63.0	63.0	
0.5	59.2	58.9	
-6.4	79.9	85.4	
:			
17.5	14.8	12.6	
14.2	44.1	38.6	
21.3	29.0	23.9	
2.5	58.4	57.0	
:			
20.9	47.5	39.3	
29.9	48.2	37.1	
2.2	59.3	58.0	
57.8	10.1	6.4	
167.8	15.8	5.9	
****	0.0	0.0	/ /
47.0	47.2	32.1	
:			
11.1	75.3	67.8	
44.7	53.4	36.9	
-6.9	47.0	50.5	
-48.1	17.6	33.9	
****	0.0	0.0	
97.1	6.7	3.4	
****	100.0	0.0	
****	2.3	0.0	