



وزارة الإتصالات و تكنولوجيا المعلومات
Ministry of Information and
Communications Technology



2008

2008



2008

2008

.2008

3340

.2004

.2008 2007

	
	
	
	
1	
51
5	1.1
5	2.1
5	3.1
6	4.1
72
133
214
335
356
397
418
479
51 2008-2007	.10



72008 1

2

92008

3

102008

4

112008

5

122008

6

132008

7

142008

8

162008

5

12

9

182008

5

10

202008

11

242008

८

2008



		12	
252008		
	5	13	
292008		
	12	5	14
312008		
		5	15
332008		
		15	16
342008		
			17
362008		
			18
38	..2008		
			19
402008	12	
)		20
422008	(
			21
432008		



		22
452008 ()	
	()	23
472008	
		24
492008 ()	
		25
492008 ()	
		26
532008-2007	
		27
592008-2007	
	15	28
692008-2007	



72008		1
82008		2
82008		3
9	2008		4
9	2008		5
92008		6
132008		7
			8
152008		
16	...2008	5	9
		5	10
172008		
		15	11
172008		
		5	12
182008		
		5	13
192008		



	5	14	
192008		
21	...2008	5	15
	12	5	16
222008		
	5		17
232008		
242008		18
252008		19
	5		20
262008		
	15		21
262008		
	15		22
272008		
272008	15	23
	5		24
282008		
	5		25
282008		



		5	26
292008		12
	12	5	27
302008		
	5		28
332008		
		15	29
342008		
			30
352008		
		15	31
352008		
			32
362008		
			33
372008		
			34
372008		



392008	35
412008	36
	()	37
472008	



	2007	2008	
(2007 %86)			•
(2008 %94)			
(%42)		(%94.3)	
			•
%44	%55		•
		(%39)	•
			•
	9		
			•
	5		
	7		
		5 (%53)	
		19-10	
	(%77.4)		•
12		(%15.8)	

		(%57)	•
%52)		
		.(%26
	5		•
(%21.6	%15.6) 2008 2007
	29	ADSL	•
			•
			•
	24-15		
		.2008 2007	
		%41.7	%46.3
			5
	.%47	%53	2007
		(%55)	•
	(%64)		•
		(%3.5)	
			•

				15	•
					•
%25	2008	(%31)		(2007)	
				%27	•
					•
			%3		•
					•
	%16	300		600	•
					•
		3			
			(28	25)
			(23	19)
			(16	18)

.1

1.1

2.1

3.1

2008

3340

3145

%94

5

/ 2008

5

12

.

(%94.3)

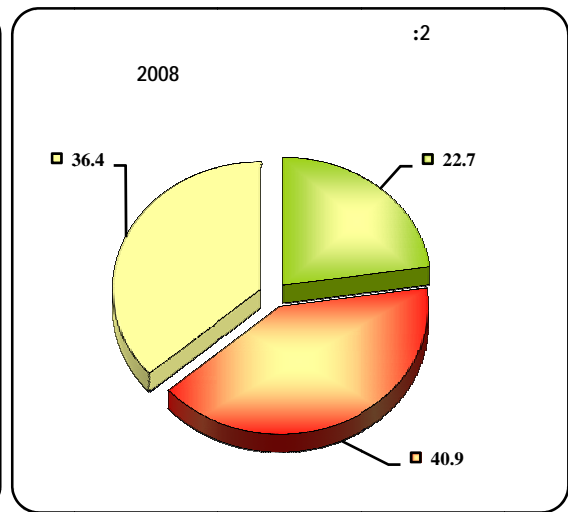
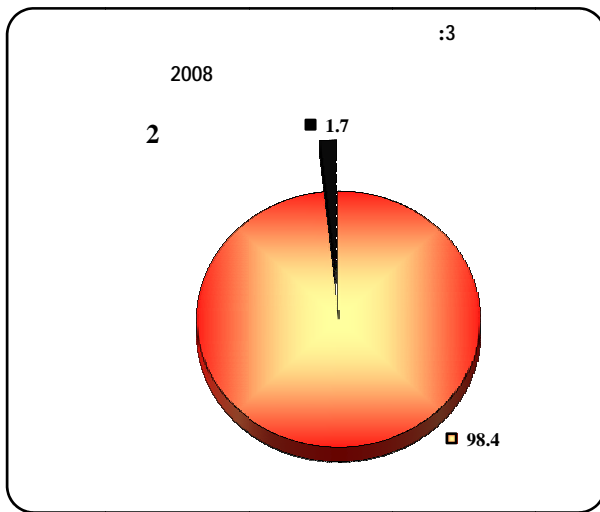
%15

%41

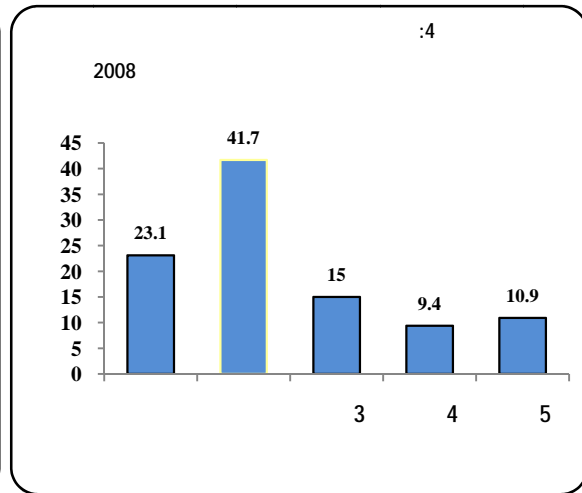
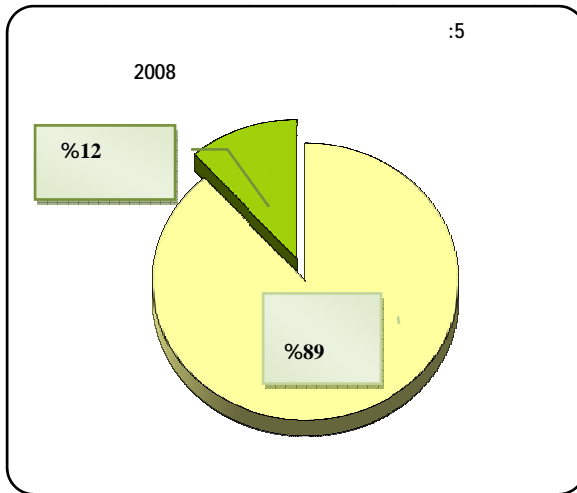
%9

3

%2



(%89)

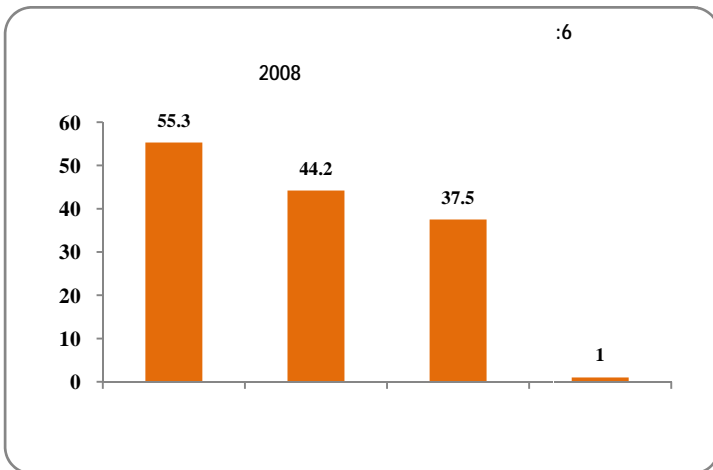


.%44



%55

%44



(%71.2)

%59.3 (%65.1)

(

.%45

2008

:2

55.3	42.2	29.9	67.5	27.9	60.5	
44.2	65.1	59.3	35.0	71.2	39.0	
37.5	24.7	45.2	36.2	26.0	39.7	
1.0	1.1	0.6	1.2	0.4	1.1	
0.2	0.7	0.3	0.1	0.6	0.1	
2964	275	777	1913	473	2492	

2008

						/
1639	116	232	1291	132	1507	100 =
44.3	46.7	60.5	41.1	55.3	43.3	1
35.2	35.8	25.6	36.9	28.9	35.8	2
11.8	13.3	8.8	12.3	7.9	12.2	3
8.7	4.2	5.1	9.7	7.8	8.7	+4
1310	179	461	670	337	973	100 =
39.1	32.3	34.8	43.9	36.5	40.1	1
42.7	50.5	45.8	38.5	45.0	41.9	2
9.1	7.8	10.0	8.7	7.7	9.5	3
9.1	9.4	9.3	8.9	10.9	8.5	+4
1112	68	351	693	123	989	100 =
51.1	59.7	45	53.4	61.9	49.8	1
32.5	27.2	32.6	33.0	23.7	33.6	2
9.6	5.7	12.5	8.6	8.3	9.8	3
6.7	7.4	9.9	5.0	6.1	6.8	+4
30	3	5	22	2	28	100 = *
74.0					79.7	1
19.6					14.9	2
5.0					5.3	3
1.4					0.0	+4

*

:

%44

:

%61

%37

%35

:

%51

%43

.%39

:

%51

%62

%60

:

%20

%74

%80

(%94)

%16

:4

2008

93.9	89.8	97.3	93.0	93.2	93.9	
16.1	19.6	10.7	17.7	14.6	16.4	
2964	275	777	1913	473	2492	

%38

%23

%20

%17

:5

2008

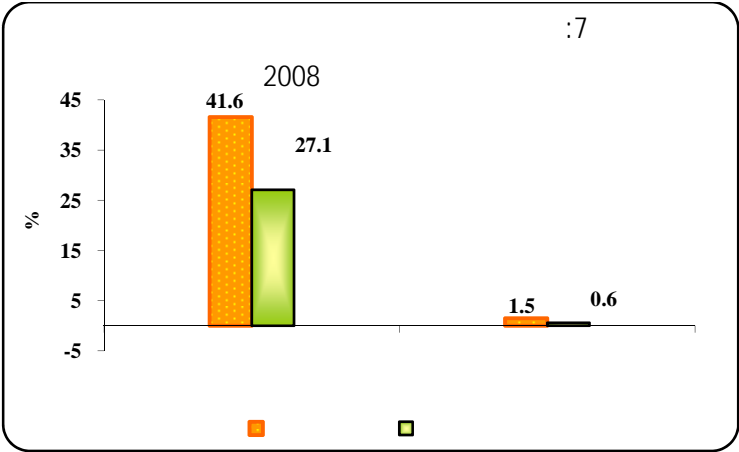
*								
	64.5	60.5	59.6	10.8	16.8	19.8	23.0	1
	20.8	23.6	27.1	39.3	30.3	37.9	33.2	2
	12.2	12.4	9.0	21.9	19.2	15.5	18.5	3
	1.5	1.8	1.7	0.0	13.2	10.6	10.6	4
	1.0	1.6	2.7	28.0	20.4	16.3	14.7	+ 5
8	159	200	333	28	1079	1255	1528	100 =

*

.3

(%39)

%39



(%36)

(%27 %42)

%43

2008 **:6**

39.3	33.9	33.1	42.6	27.1	41.6	
1.4	0.7	0.6	1.8	0.6	1.5	
3145	289	833	2023	501	2644	

(%94)

6

%21

.(%95)

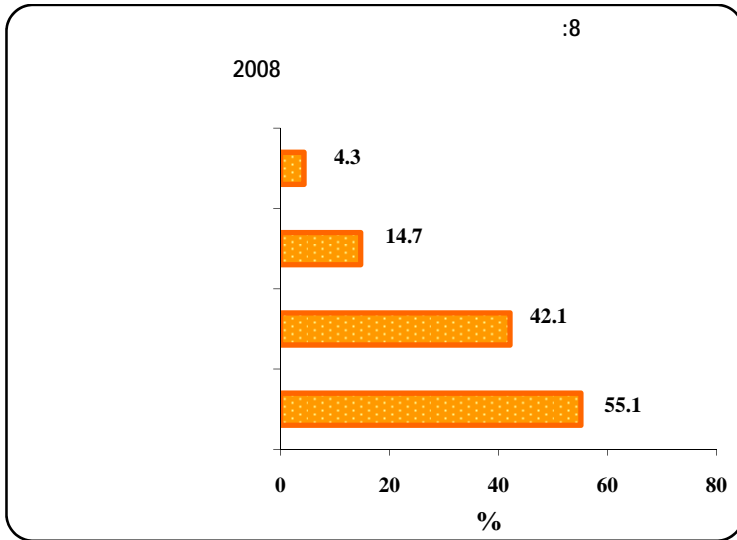
:7

2008

	3	2	1	
1236	11	62	1164	100 =
12.4	17.7	4.4	12.7	1
19.2	11.2	31.6	18.6	2
15.5	31.1	10.8	15.6	3
17.1	29.3	26.3	16.5	4
15.4	10.7	9.2	15.7	5
20.5	0.0	17.8	20.8	+6
43	0	2	41	100 = *
20.9			22.0	1
11.6			12.2	2
16.3			17.1	3
39.5			41.5	4
4.7			0.0	5
9.3			9.8	+6

*

%55



%64

%53

%42)

(

%15

%62

* :8

2008

55.1	59.7	61.6	51.1	63.6	53.0	
14.7	14.1	11.7	16.3	14.8	14.6	
42.1	28.8	36.3	47.1	35.3	43.6	
4.3	4.7	3.8	4.6	3.6	4.5	
1909	191	557	1161	365	1544	

5 (%53)

19-10

5

%53

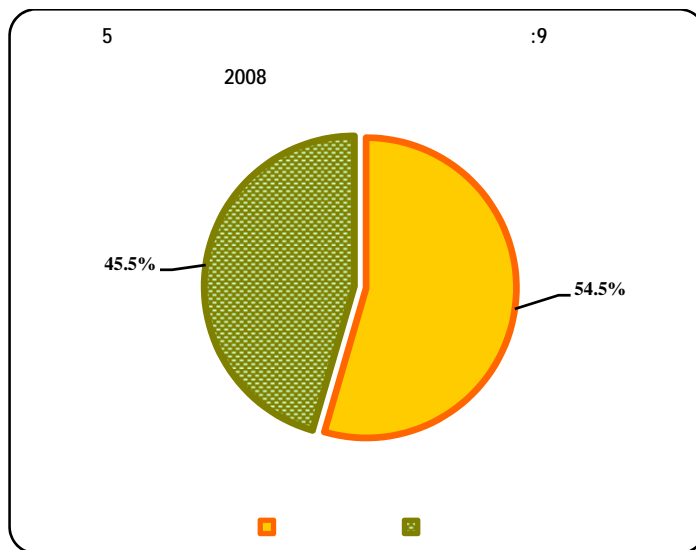
%57

7

%55

%50

%46



%100

*

14-10

%82

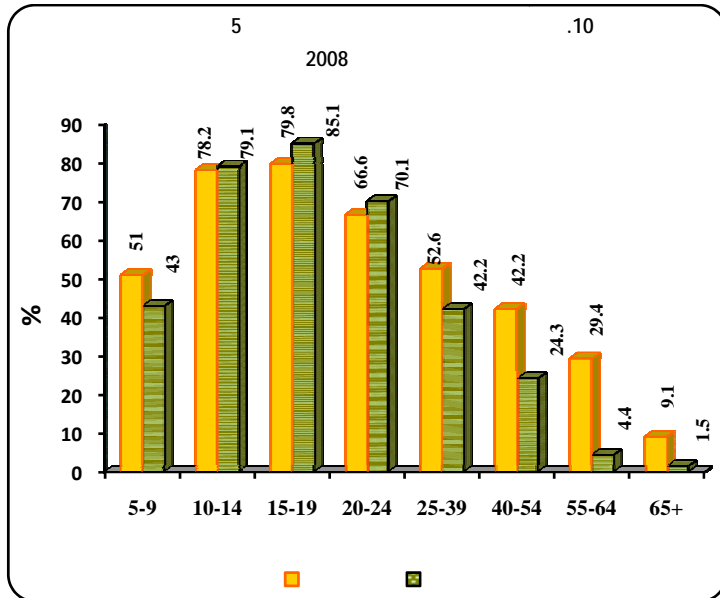
19-15

%68

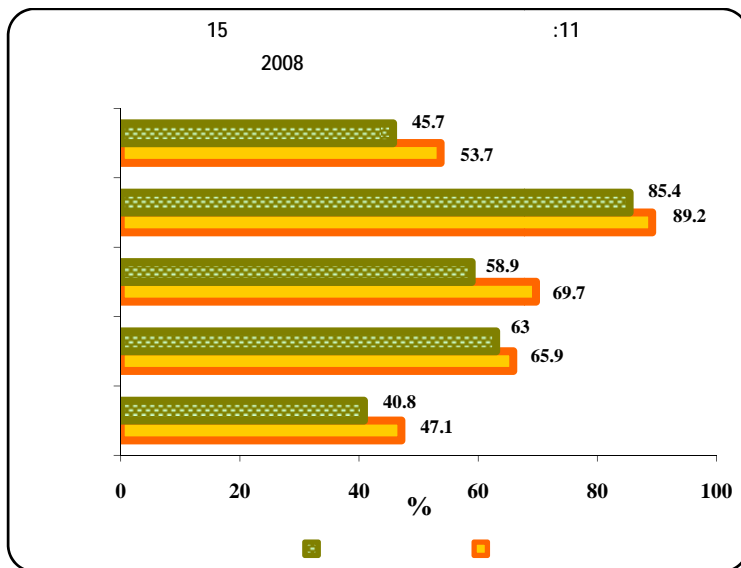
%79

24-20

40



24 -10



15

%88

%64

%.44

5

%77

12

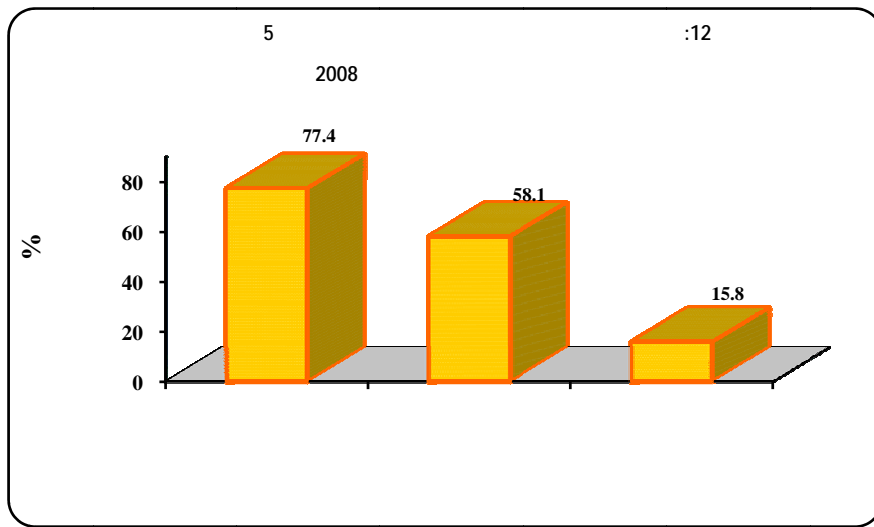
.(%70 %79)

%65)

%58

(%57

%16



5

12

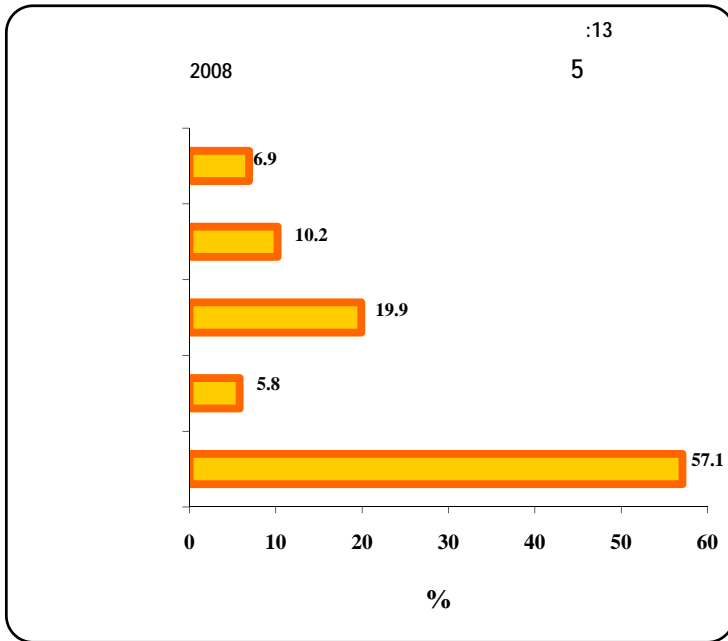
:9

2008

15.8	18.0	12.6	16.8	14.6	16.0	
77.4	70.8	71.2	81.2	70.2	78.8	
58.1	53.8	67.8	54.4	65.1	56.7	
7555	760	2090	4705	1194	6361	

(%57)

•



5

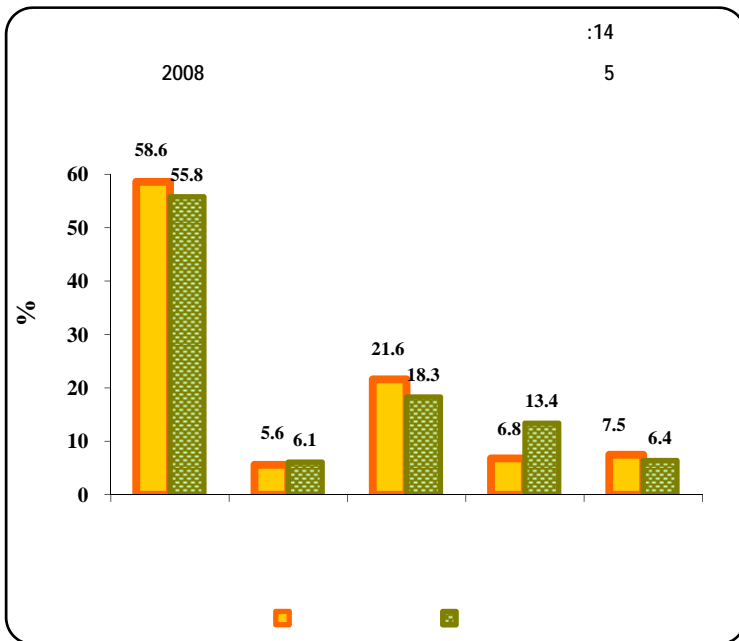
%57

)
%56

%59

(

.%20



(%10)

%8

%7

%13

2008

57.1	63.2	57.4	56.1	58.4	56.8	
5.8	5.2	5.6	6.1	4.0	6.2	
19.9	18.2	23.7	18.1	20.5	19.7	
10.2	11.1	10.3	10.1	13.8	9.4	
6.9	2.3	3.1	9.5	3.4	7.8	
6624	592	2030	4001	1248	5375	100 =

.4

5

5

.%22

%21.6

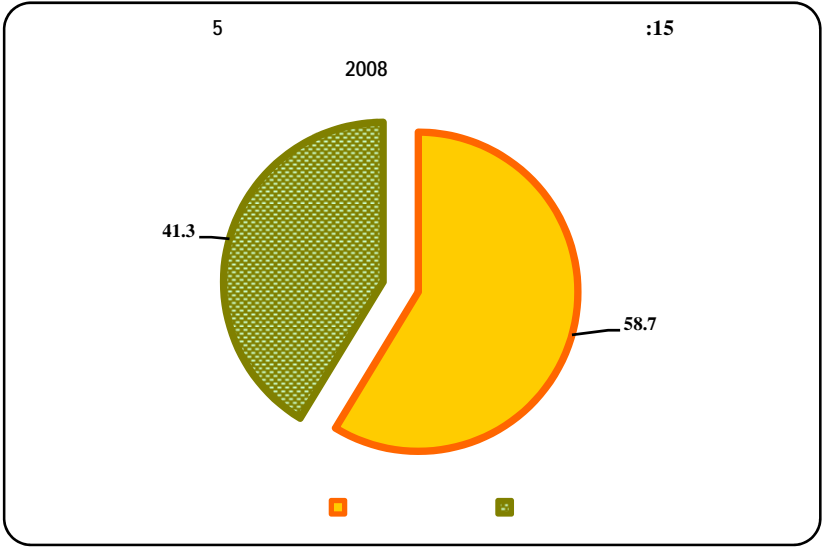
12

%41

%59

%21

%.41



5

%35

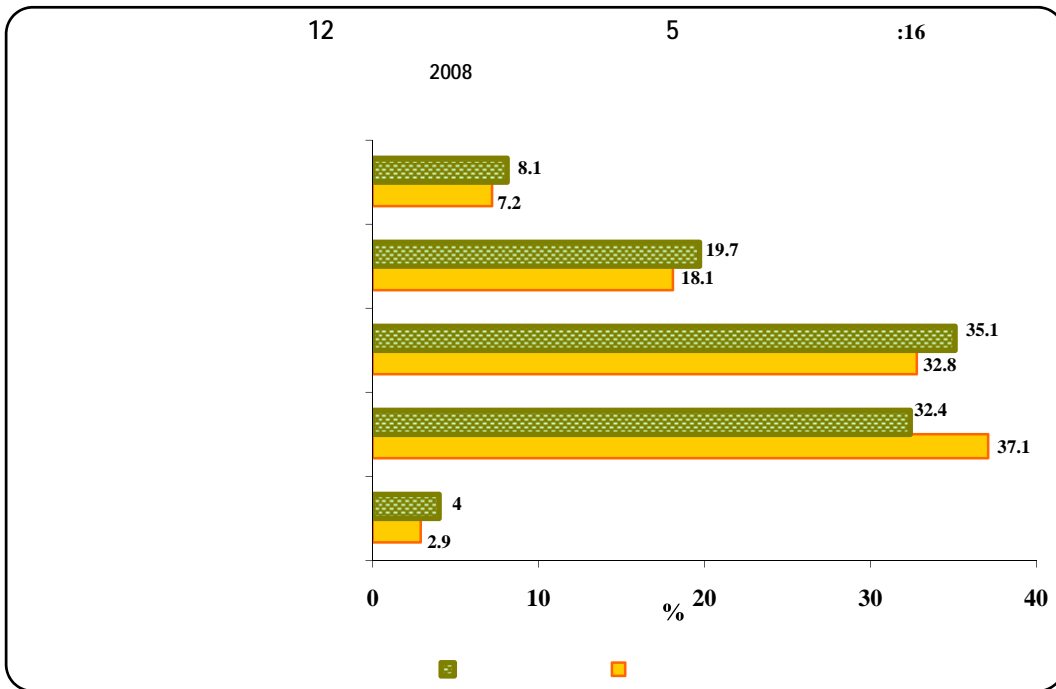
5

%35.1

.%34

%8

%32.8



5

%32

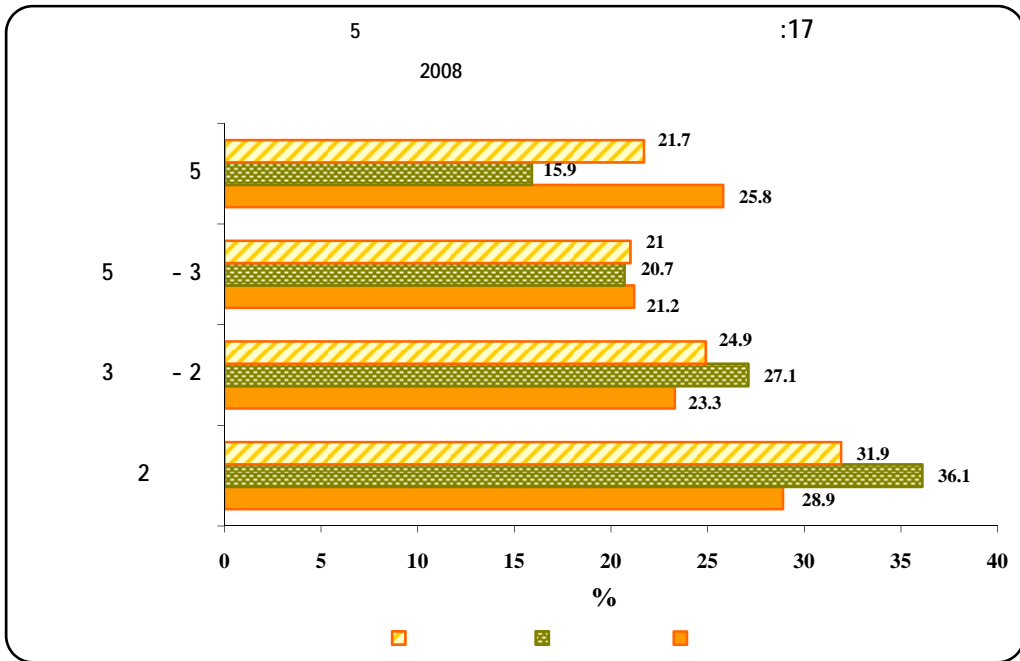
%21

5

3

%25

.%22



ADSL ●

.

%29
(%22)

%53) %51

ADSL

(

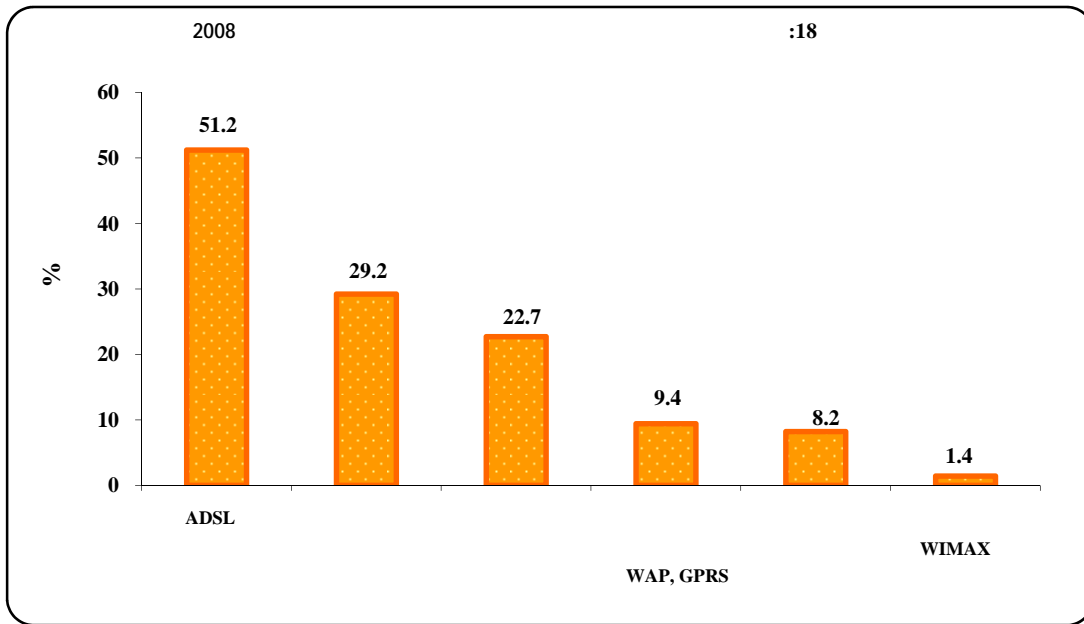
%.29

(

)

%8.2

.WIMAX

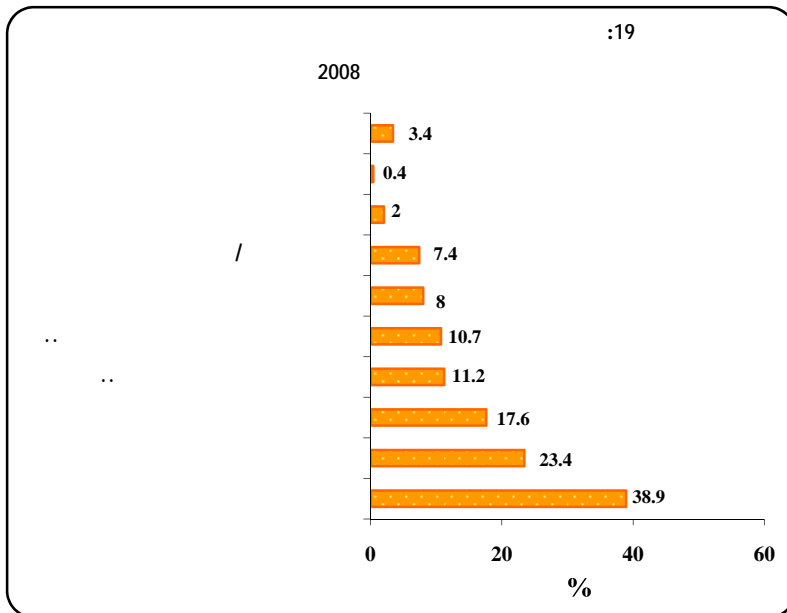


:11

2008

	*					
29.2	41.2	31.1	28.2	57.1	27.2	ADSL
8.2	17.6	6.8	8.0	10.7	8.0	
22.7	17.6	23.0	22.6	17.9	23.1	
51.2	35.3	40.5	54.5	28.6	52.8	
9.4	35.3	12.2	7.4	17.9	8.8	
1.4	0.0	4.1	0.9	0.0	1.6	WIMAX
414	17	74	323	28	386	

*



%38.9

%23.4

%.0.4

* :12

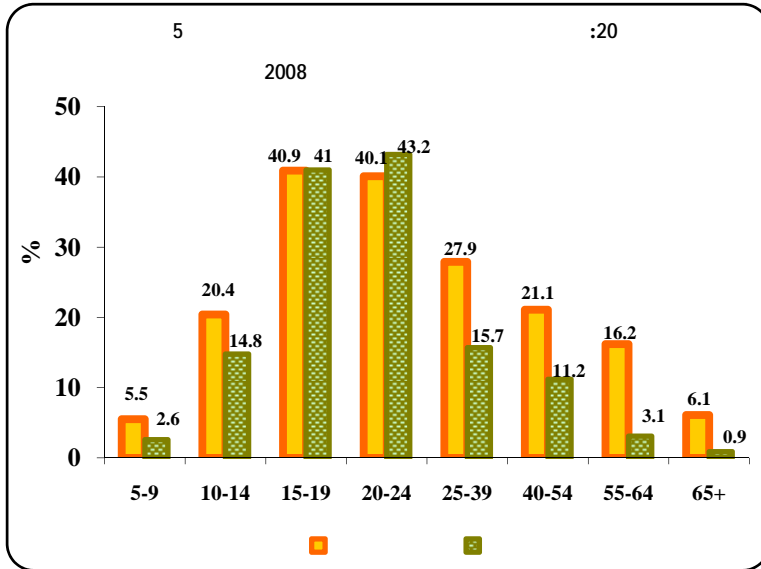
2008

2008						
10.7	14.3	5.5	12.5	7.5	11.4	(Hardware)
11.2	24.6	11.1	9.1	19.9	9.3	
38.9	38.2	45.8	35.9	44.5	37.7	
23.4	18.4	14.2	28.4	23.4	23.4	
0.4	0.7	0.3	0.3	0.7	0.3	
7.4	6.6	9.5	6.6	8.2	7.2	
17.6	7.8	15.7	20.1	14.4	18.3	
8.0	9.2	10.5	6.7	10.1	7.6	
2.0	1.9	2.6	1.8	1.7	2.1	
3.4	3.7	3.7	3.4	4.1	3.3	
2713	272	759	1700	473	2258	

%100

*

24-15



24-15

24-20

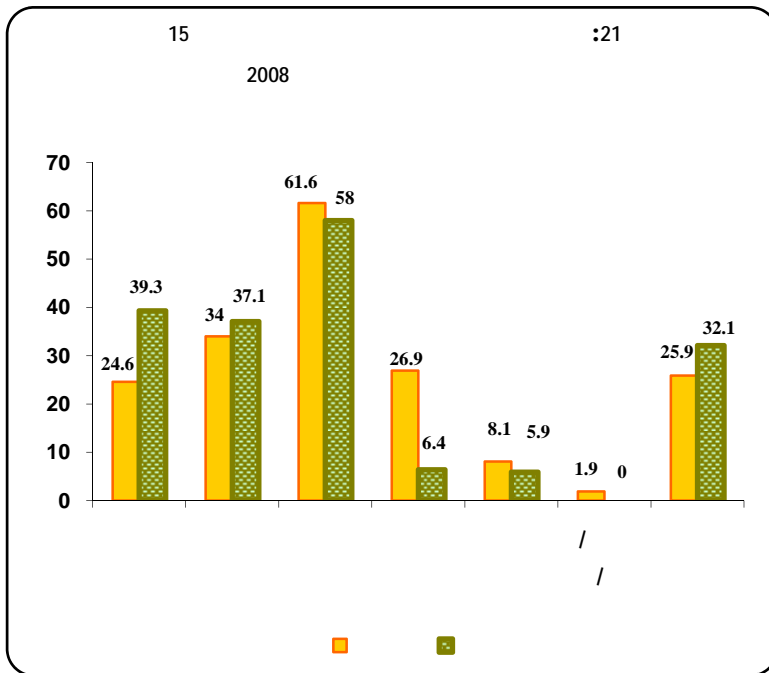
%42

%43.2

%41

%40

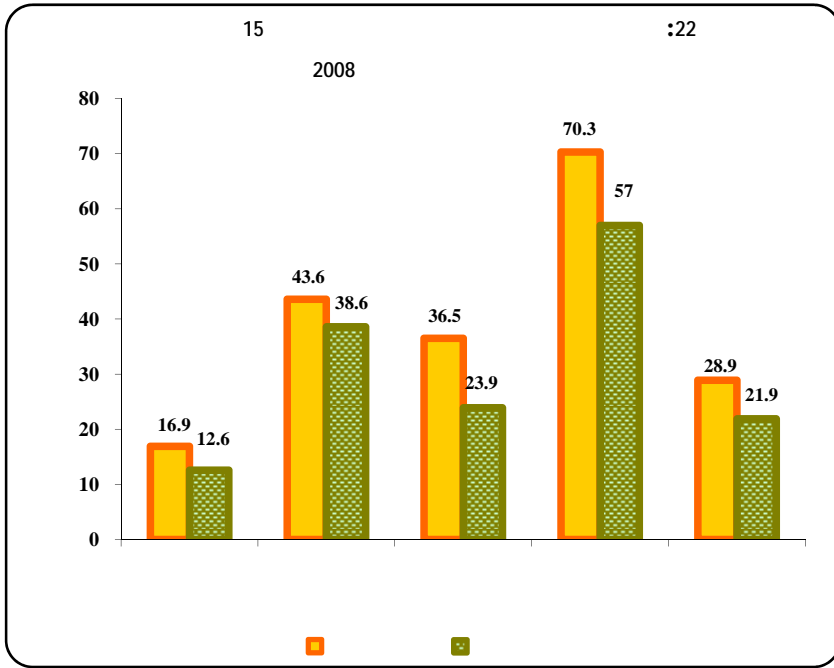
19-15



15

%60

%35



%65
15
%41

15

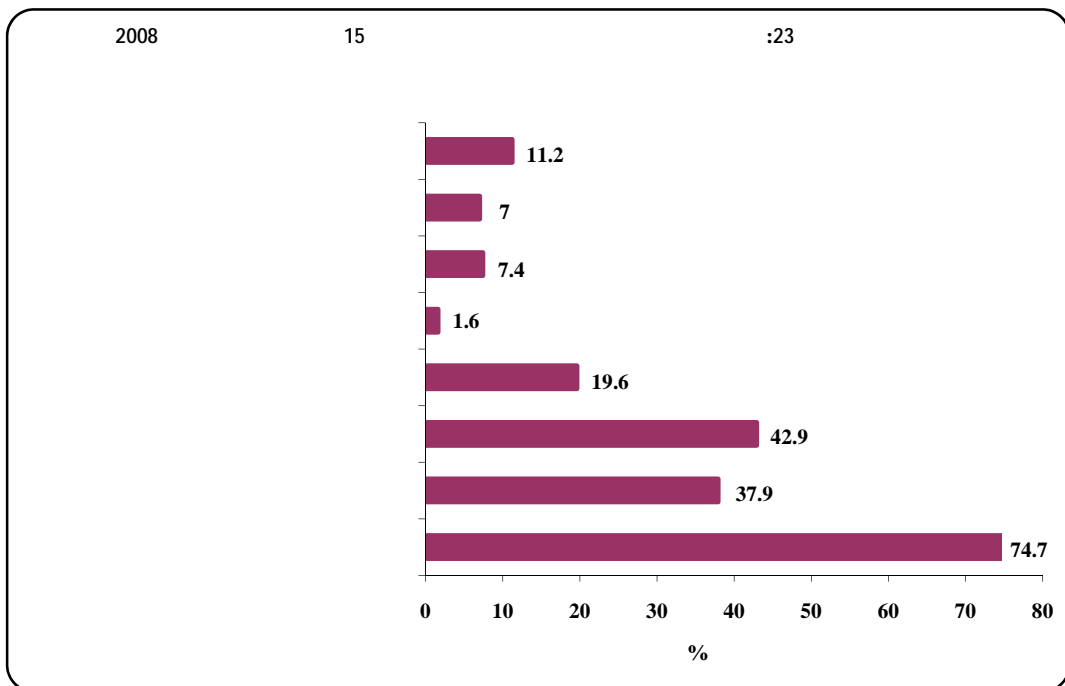
24

%75

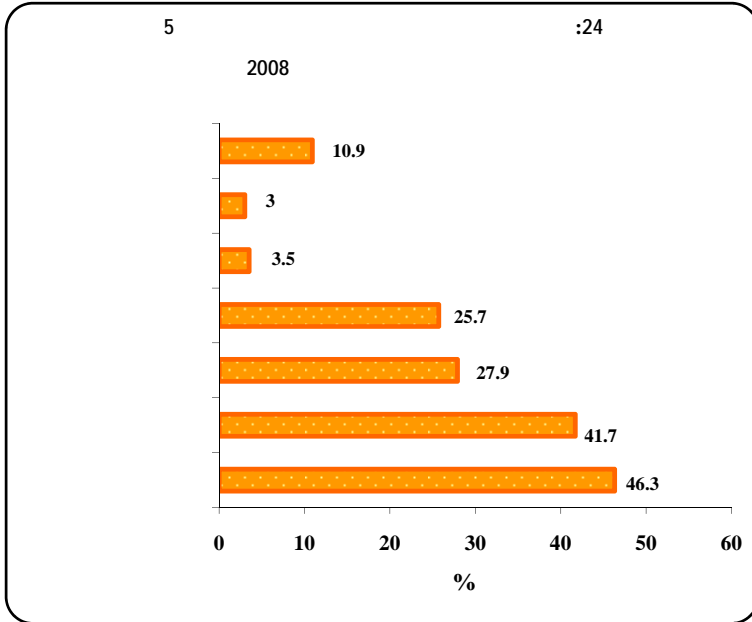
%43

%.2

%38



%46

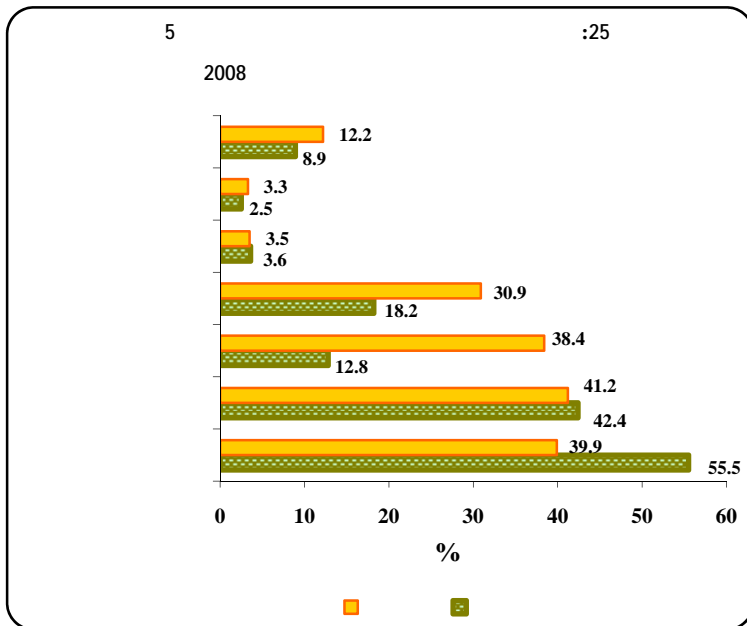


5

.%42

%28

%26



26

16)

(

26

13

5

:13

2008

41.7	16.3	29.0	50.2	25.7	43.9	
25.7	31.4	18.0	27.9	26.6	25.6	
27.9	26.6	30.5	27.0	20.9	28.9	
46.3	52.9	52.0	43.1	56.2	45.0	
3.5	4.7	2.7	3.7	2.5	3.6	
3.0	6.6	4.1	2.0	4.5	2.7	
10.9	6.1	9.7	11.9	10.7	10.9	*
2957	265	762	1931	354	2603	

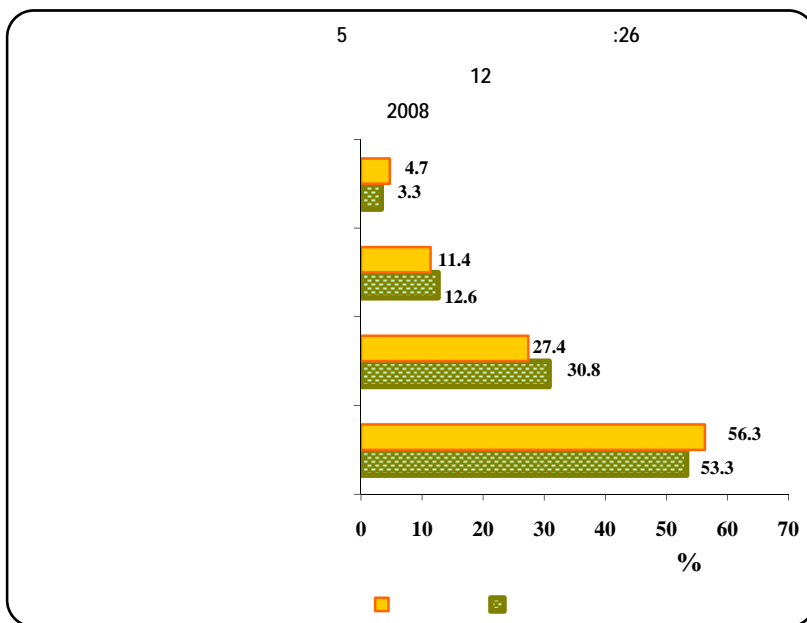
*

(%55)

%55

%56

%53



%43

%29

(%64)

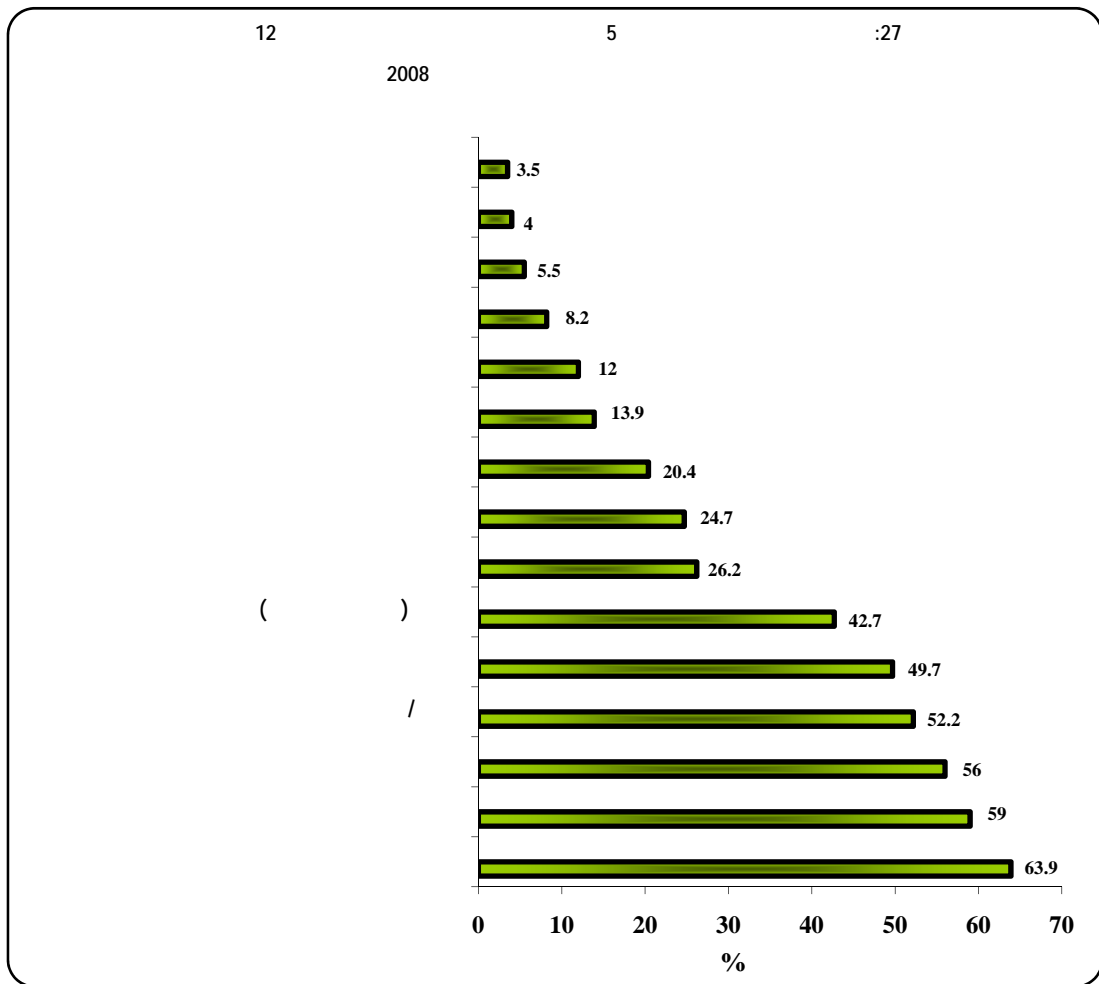
5

(%68 %63) %64

.(%66) %59

%52.2 %56

.%4



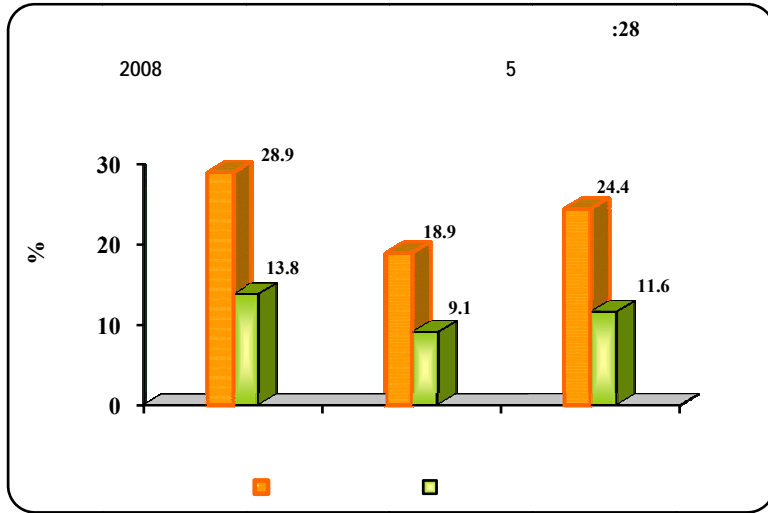
2008

63.9	52.2	69.2	63.4	68.1	63.3	
59.0	55.1	42.8	66.0	53.7	59.7	
56.0	51.9	53.2	57.7	53.4	56.3	
52.2	45.4	43.6	56.6	32.9	54.9	/
49.7	52.5	37.4	54.2	46.3	50.2	
42.7	34.2	29.0	49.3	26.9	44.9	()
26.2	20.6	27.6	26.3	29.8	25.7	
24.7	22.4	29.7	23.0	23.6	24.9	
20.4	12.2	23.2	20.4	22.6	20.1	
13.9	13.1	14.6	13.7	12.6	14.1	
12.0	6.4	16.2	11.1	8.7	12.4	
8.2	5.5	2.9	10.7	2.8	9.0	
5.5	1.8	3.5	6.7	2.7	5.8	
4.0	3.1	1.6	5.1	1.5	4.4	
3.5	2.6	0.4	4.9	0.6	3.9	/
2957	265	762	1931	354	2603	

%100

*

5. البريد الإلكتروني



%22.4

5

%11.6

%24.4

.)

%.55

39-25

%)28

24-20

(%40

) %30

%.4

55

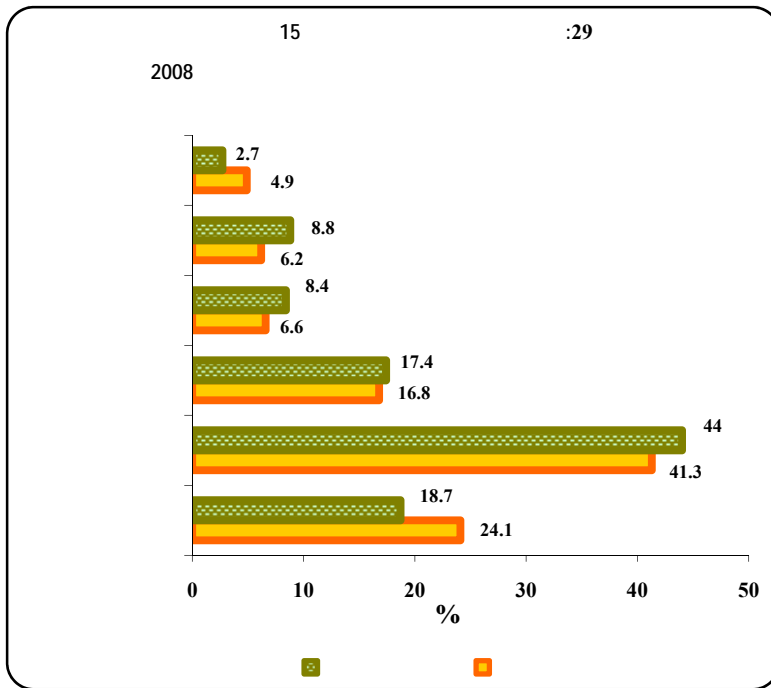
(%37

5

:15

2008

2008							
1.1	0.8	0.4	1.3	0.0	1.1	9-5	
5.5	4.2	2.3	6.6	1.9	5.8	14-10	
19.2	22.4	19.7	18.7	23.1	18.9	19-15	
28.2	22.9	36.5	26.0	38.6	27.3	24-20	
29.9	40.3	27.2	29.7	32.0	29.7	39-25	
12.4	7.7	10.6	13.4	4.4	13.1	54-40	
2.9	1.7	2.2	3.2	0.0	3.1	64-55	
0.9	0.0	1.0	1.0	0.0	1.0	+65	
1690	119	383	1188	193	1552	100 =	



%65

) %22

.(

%42

15

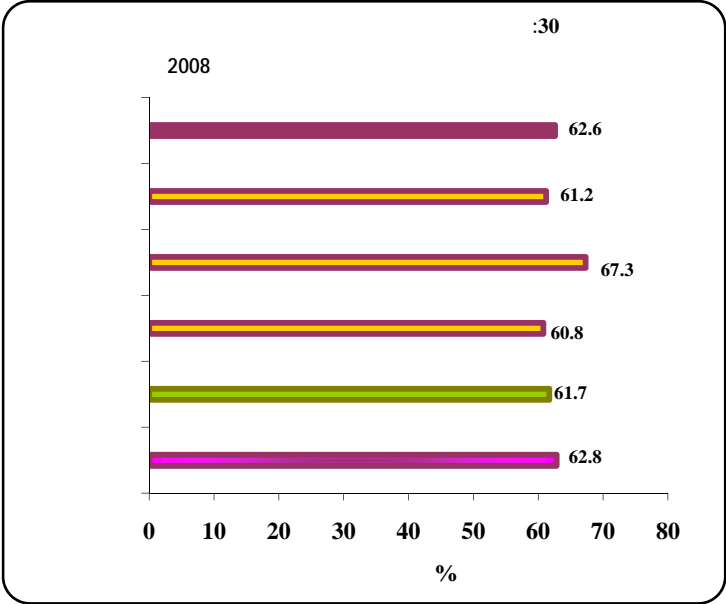
:16

2008

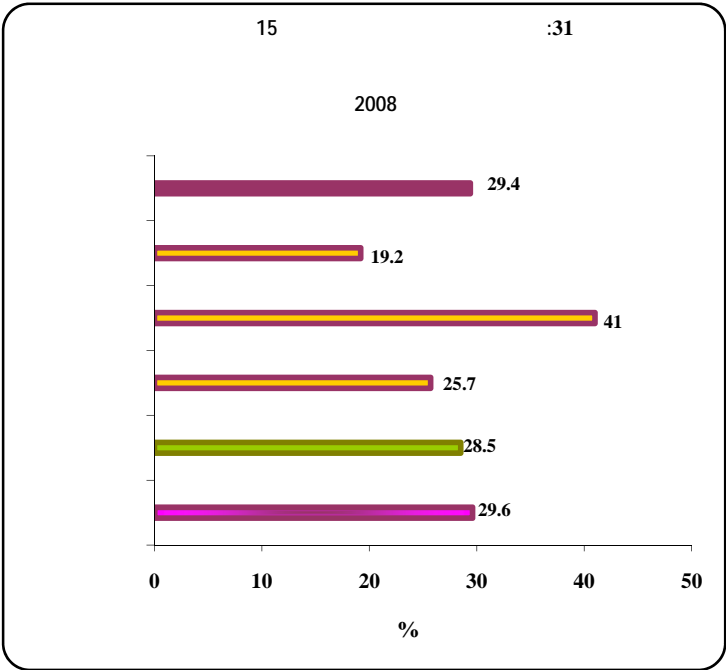
22.2	18.4	16.7	24.5	15.4	22.8	
42.3	40.0	36.6	44.5	40.0	42.5	
17.0	25.2	18.5	15.6	16.1	17.1	
7.2	5.6	10.0	6.4	10.1	7.0	
7.1	3.5	12.6	5.6	11.1	6.7	
4.1	7.2	5.5	3.4	7.2	3.9	
1580	113	372	1094	136	1444	100=

.6

15



%63



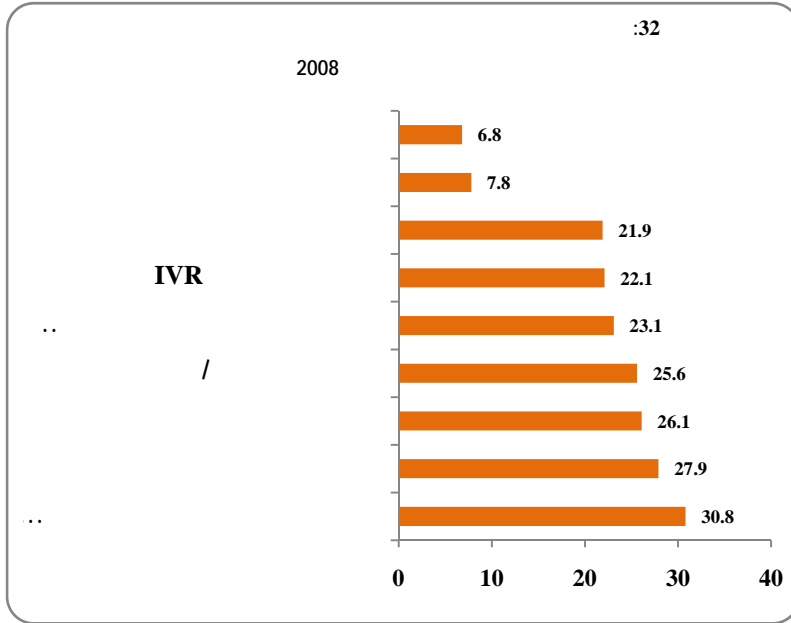
15

%29.6) %29

(%28.5

.%41

(%31)



%8

*

:17

2008

2008						
30.8	24.2	32.7	31.0	29.3	31.1	/
27.9	24.2	29.1	27.9	20.6	29.3	
26.1	19.7	23.5	28.1	25.1	26.3	
25.6	24.9	26.8	25.2	25.9	25.5	
23.1	18.0	26.8	22.3	24.2	22.9	
22.1	21.1	24.4	21.3	22.8	22.0	
21.9	19.0	21.6	22.5	18.8	22.6	
7.8	8.0	4.2	9.2	6.8	8.0	
6.8	9.3	5.3	7.0	5.8	7.0	
3145	289	833	2023	501	2644	

%100

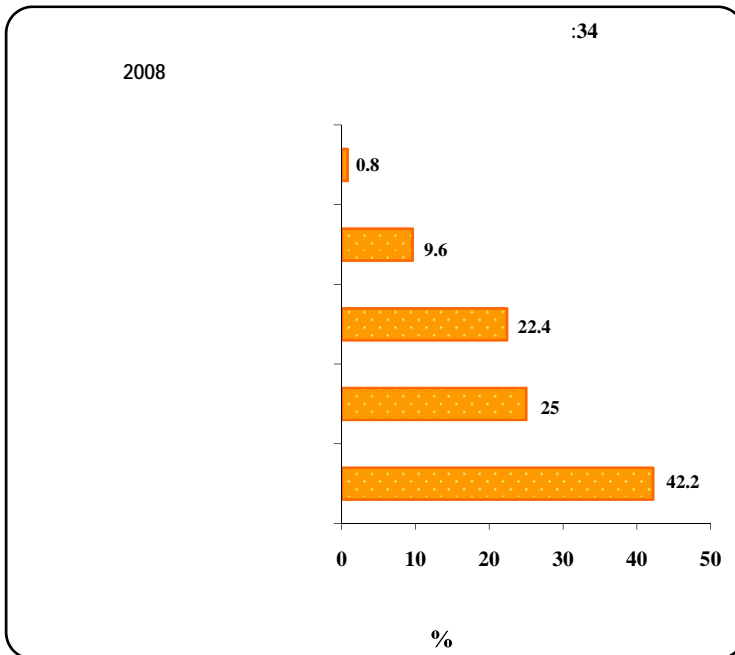
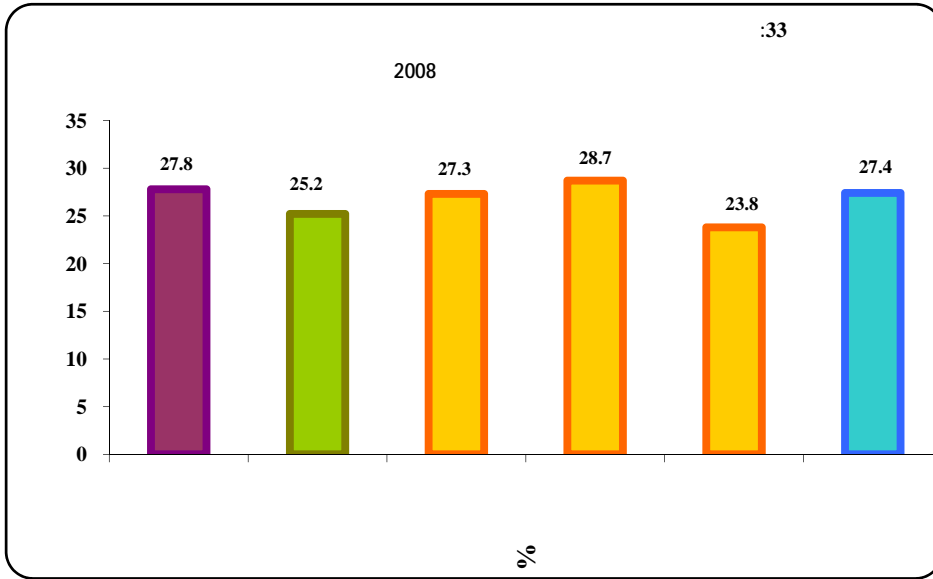
*

%27

%28

%27.4

%25



%32.4

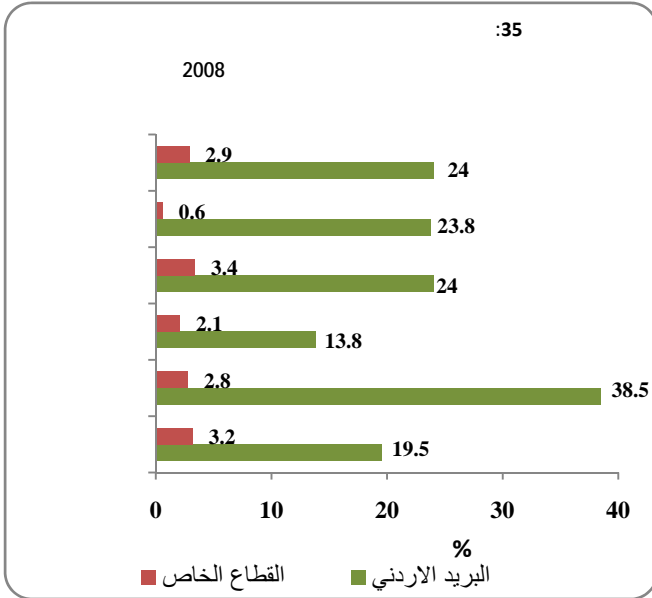
%23.7

%10

2008

22.4	22.6	24.2	21.6	17.1	23.3	
9.6	14.3	10.4	8.6	10.7	9.4	
42.2	42.7	40.1	43.1	39.8	42.6	
25.0	18.6	25.0	25.7	32.4	23.7	
0.8	1.8	0.2	1.0	0.0	1.0	
861	69	239	553	126	735	100 =

%3



%24

%3

%39

10

12

10)

10

12

(

5

10

2008

9.7	8.3	10.5	9.3	9.4	9.8	
9.7	6.7	6.5	10.6	5.4	10.1	
10.0	4.5	5.0	11.6	4.7	10.6	
3.7	1.4	1.9	4.1	1.7	3.8	
3.8	5.9	2.4	3.6	3.0	3.8	
9.7	8.3	10.5	9.3	9.4	9.8	
9.9	6.7	6.6	10.9	5.5	10.3	
10.1	4.5	5.0	11.7	4.7	10.7	
3.7	1.4	1.9	4.1	1.7	3.8	
3.8	5.9	2.4	3.6	3.0	3.8	
8.9	10.5	8.8	8.8	10.1	8.9	
6.4	0.0	6.8	6.3	4.0	6.5	
9.1	0.0	2.0	9.8	0.0	9.1	
5.5	0.0	2.4	5.9	0.0	5.5	
4.8	9.6	1.7	4.8	9.0	4.6	

%45

%7.5

1000

600

%69

300

: 20

2008 ()

	()							/
	+1000	-600 999	-400 599	-300 399	-200 299	-100 199	100	
2644	148	282	549	476	656	444	90	
32.8	76.9	52.3	42.2	32.6	19.1	17.1	19.1	
94.3	100.0	99.6	98.5	99.4	94.5	84.2	61.1	
41.6	85.2	69.3	57.8	44.0	27.3	14.8	7.5	
1.5	8.6	6.3	1.1	0.7	0.0	0.0	0.0	
0.8	4.7	2.8	0.4	0.5	0.2	0.0	0.0	
501	13	47	83	93	161	84	21	
19.8	58.4	42.6	24.6	17.7	13.9	11.6	14.8	
94.3	100.0	100.0	98.7	97.2	95.7	88.3	60.8	
27.0	75.7	44.8	46.0	29.1	20.7	7.3	3.5	
0.6	5.9	2.8	1.0	0.0	0.0	0.0	0.0	
0.4	4.2	0.0	0.0	0.9	0.5	0.0	0.0	
3145	161	329	632	569	816	528	111	
30.7	75.6	50.9	39.9	30.2	18.0	16.3	18.3	
94.3	100.0	99.5	98.6	99.0	94.8	84.9	61.4	
39.3	74.6	65.7	56.2	41.6	26.1	13.6	6.8	
1.4	8.4	5.8	1.1	0.6	0.0	0.0	0.0	
0.7	4.7	2.4	0.4	0.6	0.2	0.0	0.0	

ADSL

%29

399-300 199-100

WIMAX

:21

2008

	()						
	+1000	-600 999	-400 599	-300 399	-200 299	-100 199	
29.3	27.2	26.8	39.9	20.0	29.9	29.7	ADSL WAP,GPRS WIMAX
8.2	6.4	11.5	9.3	2.2	9.8	14.4	
22.6	24.4	23.3	22.7	20.6	18.1	31.4	
51.1	52.8	52.5	42.8	59.8	44.9	47.6	
9.5	6.3	11.4	10.5	5.8	20.3	5.2	
1.4	3.0	1.4	0.0	0.9	4.1	0.0	
414	93	110	106	64	28	10	

4 100

100

40

8

13

999-600

.(38 40)

200

200

.

300

9

100

.

3

.

2008 ()

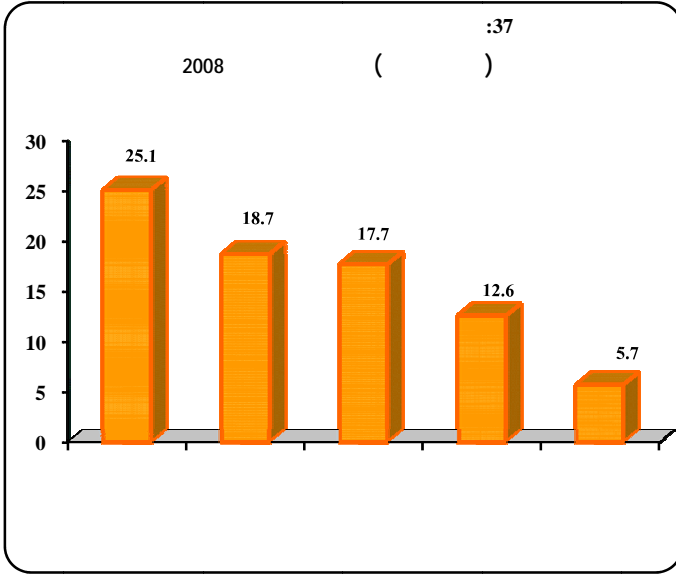
	()							
	+1000	-600 999	-400 599	-300 399	-200 299	-100 199	100	
2644	148	282	549	476	656	444	90	
19.1	31.1	20.7	19.2	16.8	14.0	11.8	13.4	
25.4	68.6	40.4	28.8	22.0	16.9	13.4	7.7	
18.3	26.9	19.3	19.8	16.0	9.1	8.2	3.0	
5.8	10.4	5.2	5.7	5.4	4.3	4.9	3.0	
12.8	16.3	14.4	8.4	5.3	15.9	8.9	0.0	
501	13	47	83	93	161	84	21	
15.5	38.9	15.7	12.7	14.6	13.0	12.7	8.7	
23.6	129.9	37.7	31.9	17.4	16.4	12.0	8.6	
9.9	19.7	9.0	10.0	9.1	7.6	8.6	5.0	
5.1	6.5	7.8	3.6	1.0	5.2	5.4	9.4	
9.4	15.0	0.0	5.0	0.0	6.0	0.0	0.0	
3145	161	329	632	569	816	528	111	
18.7	31.5	20.1	18.7	16.6	13.8	11.9	12.8	
25.1	73.6	40.0	29.2	21.2	16.8	13.2	7.9	
17.7	26.5	18.4	19.2	15.5	8.8	8.2	3.3	
5.7	10.1	5.4	5.5	5.2	4.5	5.0	4.9	
12.6	16.2	14.4	8.0	5.3	14.7	8.9	0.0	

9

19

25

18



25) 25

(24

19

18

10

()

:23

2008

18.7	15.7	14.3	20.3	15.5	19.1	
25.1	27.8	20.9	26.4	23.6	25.4	
17.7	13.4	12.0	20.7	9.9	18.3	
5.7	6.4	4.4	6.1	5.1	5.8	
12.6	16.3	13.4	12.1	9.4	12.8	

19 10 (%43)

49 20 %40

49 20

%41

.(%39) 19-10

19-10 %36

10

%.29

10

10

: 24

2008 ()

19.1	14.6	15.3	30.5	16.0	17.4	9-1
38.7	31.1	32.3	41.1	42.9	42.7	19-10
33.4	40.7	39.5	26.9	35.6	34.8	49-20
6.4	9.9	9.4	0.8	4.1	3.8	99-50
2.1	2.7	2.6	0.6	1.0	0.9	+100
0.3	1.0	0.9	0.0	0.5	0.4	
473	2492	2964	91	484	939	100 =

:25

2008 ()

42.7	75.7	51.2	34.5	35.8		9-1
15.0	12.3	31.9	28.3	28.6		19-10
17.2	5.6	14.0	29.1	27.9		49-20
2.4	0.0	1.6	4.2	4.0		99-50
0.0	0.0	0.0	1.3	1.2		+100
22.7	6.3	1.3	2.6	2.5		
78	276	49	589	368		100 =

10. مؤشرات 2007-2008

	2008	2007	
:			
-10.9	30.7	41.6	()
7.9	94.2	86.3	()
3.6	39.3	35.7	
0.0	1.4	1.4	
-0.2	0.7	0.9	
:			
-8.7	55.1	63.8	
-10.5	14.7	25.2	
1.9	42.1	40.2	
-1.3	4.3	5.6	
:			
-38.3	29.2	67.5	
-4.7	8.2	12.9	
-10.3	22.7	33.0	
29.4	51.2	21.8	ADSL
:			
1.8	10.7	8.9	
-8.7	11.2	19.9	
-2.9	38.9	41.8	
-7.2	23.4	30.6	
-0.8	0.4	1.2	
-1.2	7.4	8.6	/
2.8	17.6	14.8	
-10.2	8.0	18.2	
-5.1	3.4	8.5	

	2008	2007	
:			
5.4	27.9	22.5	/ IVR
6.2	30.8	24.6	
4.4	25.6	21.2	
12.1	22.1	10.0	
8.4	21.9	13.5	
1.1	6.8	5.7	
7.8	26.1	18.3	
4.7	23.1	18.4	
-2.5	7.8	10.3	
:			
-4.6	18.7	23.3	
-2.9	25.1	28.0	
1.4	17.7	16.3	
0.1	5.7	5.6	
2.7	12.6	9.9	
:			
-2	9.7	11.7	12
-6.3	9.7	16.0	12
-0.4	10.0	10.4	12
-0.7	3.7	4.4	12
-1.5	3.8	5.3	12

	2008	2007	
:			
-10.8	32.8	43.6	()
7.7	94.3	86.6	()
2.8	41.6	38.8	
-0.1	1.5	1.6	
-0.2	0.8	1.0	
:			
-8.3	53.0	61.3	
-10.7	14.6	25.3	
1.9	43.7	41.8	
-0.6	4.5	5.1	
:			
-40.2	27.2	67.4	
-4.5	8.0	12.5	
-9.5	23.1	32.6	
30.0	52.8	22.8	ADSL
:			
1.5	11.4	9.9	
-9.3	9.3	18.6	
-3.2	37.7	40.9	
-7.8	23.4	31.2	
-0.8	0.3	1.1	
-2.1	7.2	9.3	/
3.4	18.3	14.9	
-10.9	7.6	18.5	
-5.1	3.3	8.4	

	2008	2007	
:			
5.4	29.3	23.9	IVR
5.7	31.1	25.4	
3.8	25.5	21.7	
11.6	22.0	10.4	
9.1	22.6	13.5	
0.9	7.0	6.1	
6.9	26.3	19.4	
3.7	22.9	19.2	
-2.9	8.0	10.9	
:			
-5.2	19.1	24.3	
-3.6	25.4	29.0	
1.9	18.3	16.4	
0.2	5.8	5.6	
2.7	12.8	10.1	
:			
-2.1	9.8	11.9	12
-6.7	10.1	16.8	12
-0.3	10.6	10.9	12
-0.7	3.8	4.5	12
-1.6	3.8	5.4	12

	2008	2007	
			:
-10.3	19.8	30.1	()
15.2	94.4	79.2	()
7.9	27.1	19.2	
0.2	0.6	0.4	
0.2	0.4	0.2	
			:
-10.8	63.6	74.4	
-10.1	14.8	24.9	
1.6	35.3	33.7	
-3.7	3.6	7.3	
			:
-11.3	57.1	68.4	
-10.4	10.7	21.1	
-24.2	17.9	42.1	
23.3	28.6	5.3	ADSL
			:
3.3	7.5	4.2	
-6.1	19.9	26.0	
-1.8	44.5	46.3	
-4	23.4	27.4	
-1	0.7	1.7	
2.8	8.2	5.4	/
0.1	14.4	14.3	
-6.9	10.1	17.0	
-5.1	4.1	9.2	

	2008	2007	
:			
6.0	20.6	14.6	IVR
9.3	29.3	20.0	
7.8	25.9	18.1	
14.7	22.8	8.1	
5.3	18.8	13.5	
1.8	5.8	4.0	
13	25.1	12.1	
9.6	24.2	14.6	
-0.7	6.8	7.5	
:			
3.5	18.7	15.2	
1.5	23.6	22.1	
-3.5	9.9	13.4	
-0.3	5.1	5.4	
2.2	9.4	7.2	
:			
-1.1	9.4	10.5	12
-1.7	5.4	7.1	12
-1.2	4.7	5.9	12
-1.9	1.7	3.6	12
-0.5	3.0	3.5	12

/2008-2007

	2008	2007	
7.3	53.3	46.0	:
:			
5.7	47.0	41.3	9-5
8.6	78.7	70.1	14-10
7.7	82.4	74.7	19-15
10.0	68.2	58.2	24-20
10.0	47.7	37.7	39-25
4.9	33.0	28.1	54-40
2.0	16.9	14.9	64-55
0.8	5.5	4.7	+65
: 12			
-1.2	15.8	17.0	
4.3	77.4	73.1	
-9.4	58.1	67.5	
:			
5.4	57.1	51.7	
2.2	5.8	3.6	
0.1	0.1	0.0	
-5.8	19.9	25.7	
2.0	10.2	8.2	
-9.6	1.2	10.8	
6.0	21.6	15.6	
: 12			
3.8	35.2	31.4	
-3.4	33.7	37.1	
1.1	18.8	17.7	
-2.3	7.6	9.9	
-0.6	1.4	2.0	

/2008-2007

	2008	2007	
			: 12
-10.8	41.7	52.5	
-3.1	25.7	28.8	
-2.3	27.9	30.2	
-0.9	46.3	47.2	
-1	3.5	4.5	
-0.1	3.0	3.1	
3.5	10.9	7.4	
			: 12
-3.9	8.2	12.1	
1.6	24.7	23.1	
-0.3	13.9	14.2	
6.9	63.9	57.0	
-6.1	52.2	58.3	
0.1	42.7	42.6	
-12.5	5.5	18.0	
-13.3	26.2	39.5	
-1.1	3.5	4.6	
-2.8	4.0	6.8	
-7.2	20.4	27.6	
-3.6	12.0	15.6	
0.0	49.7	49.7	
6.0	59.0	53.0	
-0.6	56.0	56.6	

/2008-2007

	2008	2007	
6.3	54.2	47.9	:
			: 12
-1.6	16.0	17.6	
3.9	78.8	74.9	
-9.7	56.7	66.4	
			:
3.6	56.8	53.2	
2.6	6.2	3.6	
0.1	0.1	0	
-5.2	19.7	24.9	
2.3	9.4	7.1	
-9.9	1.3	11.2	
5.8	22.9	17.1	
			: 12
4.0	36.7	32.7	
-3.6	33.3	36.9	
1.3	18.2	16.9	
-2.7	7.2	9.9	
-0.6	1.3	1.9	

/2008-2007

	2008	2007	
			: 12
-11.0	43.9	54.9	
-3.1	25.6	28.7	
-1.5	28.9	30.4	
-1.3	45	46.3	
-0.9	3.6	4.5	
--0.2	2.7	2.9	
3.6	10.9	7.3	
			: 12
-3.8	9.0	12.8	
1.3	24.9	23.6	
0.2	14.1	13.9	
6.7	63.3	56.6	
-5.2	54.9	60.1	
0.5	44.9	44.4	
-12.2	5.8	18.0	
-14.0	25.7	39.7	
-1.1	3.9	5.0	
-2.7	4.4	7.1	
-7.0	20.1	27.1	
-2.9	12.4	15.3	
0.1	50.2	50.1	
5.9	59.7	53.8	
-0.2	56.3	56.5	

/2008-2007

	2008	2007	
12.3	48.9	36.6	:
			: 12
1.0	14.6	13.6	
9.0	70.2	61.2	
-9.4	65.1	74.5	
			:
13.2	58.4	45.2	
0.1	4.0	3.9	
0.1	0.1	0.0	
-8.4	20.5	28.9	
1.0	13.8	12.8	
-8.1	1.1	9.2	
7.0	15.1	8.1	
			: 12
6.9	23.9	17.0	
-1.4	37.1	38.5	
-3.1	22.9	26.0	
0.0	10.5	10.5	
-1.8	1.8	3.6	

/2008-2007

	2008	2007	
			: 12
-1.3	25.7	27.0	
-3.1	26.6	29.7	
-6.7	20.9	27.6	
-1.1	56.2	57.3	
-3.4	2.5	5.9	
-0.4	4.5	4.9	
2.6	10.7	8.1	
			: 12
-1.5	2.8	4.3	
5.2	23.6	18.4	
-5.2	12.6	17.8	
7.0	68.1	61.1	
-4.9	32.9	37.8	
3.7	26.9	23.2	
-16.8	2.7	19.5	
-6.4	29.8	36.2	
0.1	0.6	0.5	
-2.3	1.5	3.8	
-9.8	22.6	32.4	
-9.7	8.7	18.4	
1.4	46.3	44.9	
8.8	53.7	44.9	
-3.9	53.4	57.3	

/2008-2007

	2008	2007	
6.2	56.6	50.4	:
:			
5.7	51.0	45.3	9-5
6.0	78.2	72.2	14-10
6.6	79.8	73.2	19-15
5.8	66.6	60.7	24-20
9.8	52.6	42.8	39-25
3.6	42.2	38.7	54-40
6.3	29.4	23.1	64-55
2.0	9.1	7.1	+65
: 12			
-1.9	20.7	22.6	
6.0	79.4	73.4	
-10.6	54.3	64.9	
:			
5.6	58.6	53.0	
1.8	5.6	3.8	
0.2	0.2	0.0	
-5.3	21.6	26.9	
1.8	6.8	5.0	
-10.2	1.1	11.3	
6.1	24.7	18.6	
: 12			
1.5	37.1	35.6	
-3.9	32.8	36.7	
2.7	18.1	15.4	
-1.3	7.2	8.5	
-0.4	1.9	2.3	

/2008-2007

	2008	2007	
			: 12
-8.1	41.2	49.3	
-4.7	30.9	35.6	
-1.2	38.4	39.6	
-2.2	39.9	42.1	
-1.9	3.5	5.4	
0.0	3.3	3.3	
4.1	12.2	8.1	
			: 12
-5.4	11.1	16.5	
-0.3	22.6	22.9	
-3.4	14.0	17.4	
10.5	66.1	55.6	
-4.5	57.8	62.3	
0.8	47.8	47.0	
-14.8	5.0	19.8	
-15.5	24.4	39.9	
-2.4	4.5	6.9	
-3.5	4.8	8.3	
-7.2	22.9	30.1	
-4.2	13.9	18.1	
-0.2	54.5	54.7	
3.6	61.3	57.7	
-3.2	57.8	61.0	

/2008-2007

	2008	2007	
8.3	49.8	41.5	:
:			
6.0	43.0	37.0	9-5
11.5	79.1	67.6	14-10
8.6	85.1	76.5	19-15
14.6	70.1	55.5	24-20
9.6	42.2	32.6	39-25
5.8	24.3	18.5	54-40
-1.4	4.4	5.9	64-55
-0.5	1.5	2.0	+65
: 12			
-0.1	9.9	10.0	
2.4	75	72.6	
-8.1	62.6	70.7	
:			
5.3	55.8	50.5	
2.6	6.1	3.5	
0.1	0.1	0.0	
-6.3	18.3	24.6	
2.3	13.4	11.1	
-9.0	1.4	10.4	
5.9	18.3	12.4	
: 12			
7.6	32.4	24.8	
-2.5	35.1	37.6	
-1.6	19.7	21.3	
-4.0	8.1	12.1	
-0.9	0.7	1.6	

/2008-2007

	2008	2007	
			:
			12
-15.4	42.4	57.8	
0.1	18.2	18.1	
-2.5	12.8	15.3	
0.1	55.5	55.4	
0.3	3.6	3.3	
-0.4	2.5	2.9	
2.7	8.9	6.2	
			:
			12
-0.9	4.2	5.1	
4.2	27.7	23.5	
4.6	13.7	9.1	
1.8	60.8	59.0	
-7.6	44.2	51.8	
-0.3	35.4	35.7	
-9.1	6.2	15.3	
-10.1	28.7	38.8	
1.2	2.1	0.9	
-1.7	2.8	4.5	
-6.8	16.8	23.6	
-2.4	9.2	11.6	
1.0	42.8	41.8	
10.0	55.7	45.7	
3.8	53.4	49.6	

/2008-2007

	2008	2007	
:			
9.2	44.3	35.1	
4.1	64.4	60.3	
8.7	63.3	54.6	
7.6	87.5	80.0	
:			
5.9	15.0	9.2	
7.7	41.1	33.4	
8.4	29.0	20.6	
9.8	64.6	54.7	
:			
5.0	27.1	22.1	
12.6	35.1	22.4	
16.6	59.7	43.2	
1.5	6.5	5.0	
2.4	8.0	5.6	
1.6	1.6	0.0	/ /
6.9	26.4	19.5	
:			
10.0	74.7	64.7	
8.6	37.9	29.3	
19.1	42.9	23.8	
5.1	19.6	14.5	
-3.2	1.6	4.8	
0.2	7.4	7.2	
2.0	7.0	5.1	
3.6	11.2	7.6	

/2008-2007

	2008	2007	
:			
8.9	47.1	38.2	
3.8	65.9	62.2	
8.7	69.7	61.1	
5.6	89.2	83.5	
:			
5.6	16.9	11.3	
6.4	43.6	37.2	
9.6	36.5	27.0	
9.3	70.3	60.9	
:			
3.6	24.6	21.0	
14.5	34.0	19.5	
15.1	61.6	46.5	
13.6	26.9	13.3	
2.4	8.1	5.7	
1.9	1.9	0.0	/ /
5.7	25.9	20.2	
:			
9.1	78.0	68.9	
9.1	38.5	29.4	
17.0	40.7	23.6	
2.7	18.3	15.6	
-3.6	1.8	5.3	
0.0	7.6	7.6	
2.0	7.0	5.1	
4.2	13.4	9.2	

/2008-2007

	2008	2007	
:			
9.3	40.8	31.5	
4.7	63.0	58.3	
8.6	58.9	50.4	
10.3	85.4	75.1	
:			
6.0	12.6	6.6	
9.2	38.6	29.4	
7.3	23.9	16.5	
10.7	57.0	46.2	
:			
12.2	39.3	27.1	
6.1	37.1	30.9	
18.2	58.0	39.8	
1.5	6.4	4.9	
5.9	5.9	0.0	
0.0	0.0	0.0	/ /
32.1	32.1	0.0	
:			
12.2	67.8	55.6	
7.9	36.9	29.1	
25.9	50.5	24.6	
29.2	33.9	4.7	
0.0	0.0	0.0	
1.1	3.4	2.4	
0.0	0.0	0.0	
-0.7	0.0	0.7	