



2008

2009

Department of Statistics

P.O.Box: 2015

Postal Code : 11181 Amman - Jordan

Phone : 00962-6-5300700

Fax : 00962-6-5300710

E-mail : stat@dos.gov.jo

Website : www.dos.gov.jo

دائرة الإحصاءات العامة

ص . ب : 2015

الرمز البريدي: 11181 عمان الاردن

هاتف : 00962-6-5300700

فاكس : 00962-6-5300710

البريد الالكتروني : stat@dos.gov.jo

موقع الدائرة : www.dos.gov.jo

هاتف مجاني/مكتب خدمة الجمهور 080022217 Call Free\ Customer Service Office

تعمل دائرة الإحصاءات العامة على توسيع قاعدة متلقي تقاريرها و أخبارها الإحصائية ، فمن يرغب بالحصول على هذه الخدمة الالكترونية مجاناً تزويد الدائرة ببيده الالكتروني على العنوان اعلاه .

The Department of Statistics is interested in expanding its free of charge service for the provision of press releases and statistical summaries .

Interested recipients may provide the Department with their e-mails on the above mentioned address

2008

40

.2004

(2008/12/31-7/1)

2007

.2008

	
	
	
	
1	
31
3	1.1
4	2.1
4	3.1
5	4.1
72
213
274
335
376
397
592008 2007	.8



222008 2007	1.3
292008	1.4
302008	2.4
312008	3.4
39 2008	1.7
402008	2.7
412008	3.7
422008	4.7
432008	5.7
442008	6.7
452008	7.7



		8.7
462008	
		9.7
472008	
		10.7
482008	
		11.7
492008	
		12.7
502008	
		13.7
512008	
		14.7
522008	
		15.7
532008	
		16.7
542008	
		17.7
552008	
		18.7
562008	
		19.7
572008	



		20.7
582008	1.8
592008 2007	2.8
602008 2007	3.8
	2007	
612008	4.8
	2007	
622008	
632008 2007	5.8
	2007	6.8
642008	



		1.2
72008	
72008	2.2
8	2008	3.2
		4.2
82008	
92008	5.2
		6.2
92008	
		7.2
102008	
		8.2
112008	
		9.2
112008	
		10.2
122008	
13	2008	11.2
		12.2
132008	
14	2008	13.2
		14.2
142008	



152008	15.2
		16.2
152008	17.2
162008	18.2
162008	19.2
172008	20.2
172008	21.2
182008	22.2
192008	1.3
212008	2.3
212008	3.3
222008	4.3
232008	



232008	5.3
242008	6.3
252008	7.3
272008	1.4
332008	1.5
342008	2.5
352008	3.5
372008	1.6
382008	2.6
382008	3.6

%44

(%13 %16)

%38

)

%9

%42 (

%17

(%6)

.%16

2007

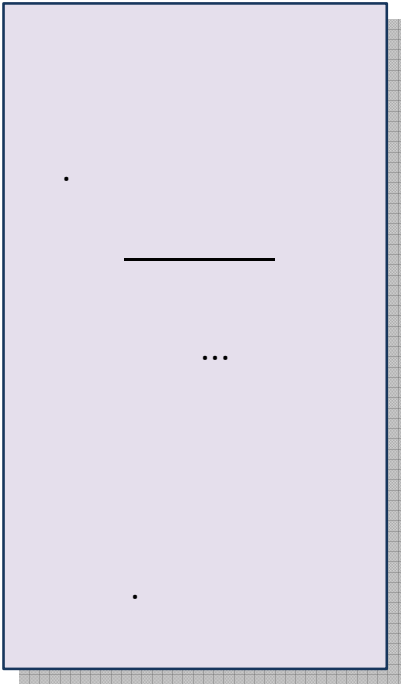
2008

%12

%21

.1

1.1



.(PDA)

(
.2008)

(
(2008/12/31 2008/7/1)

.2

2008

47

27

20

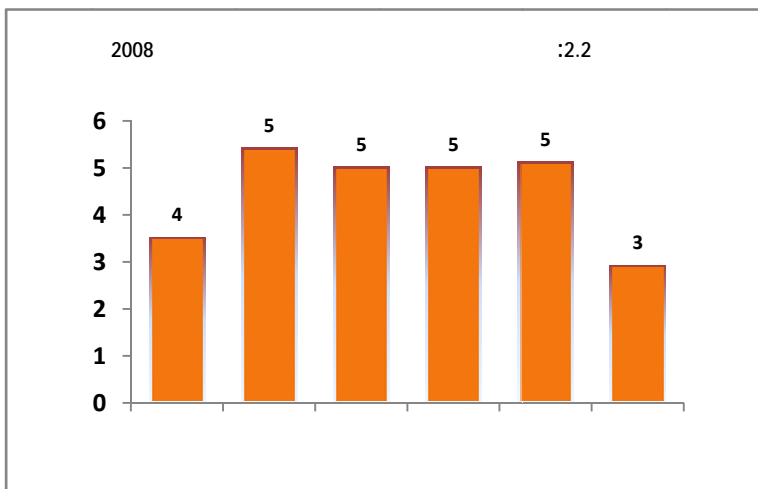
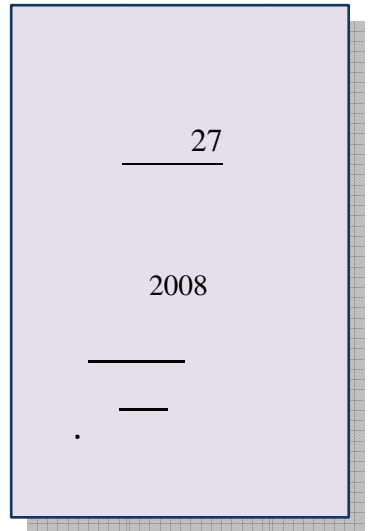
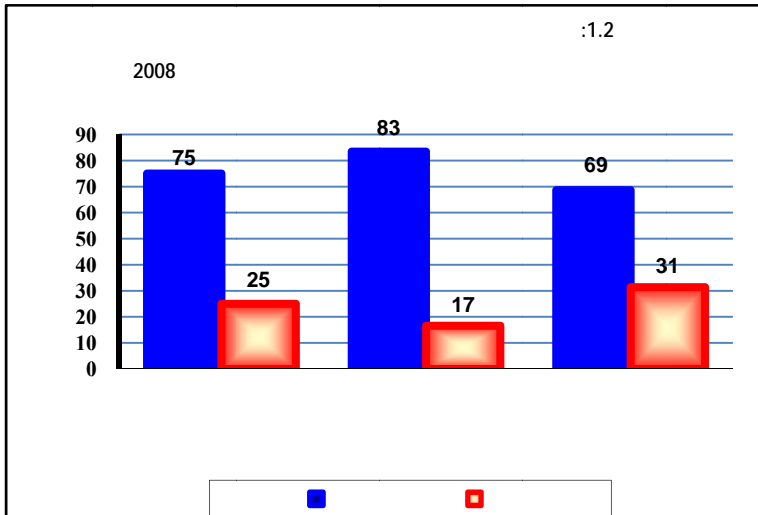
18

8

%69

.%31

.(1.7)



%20

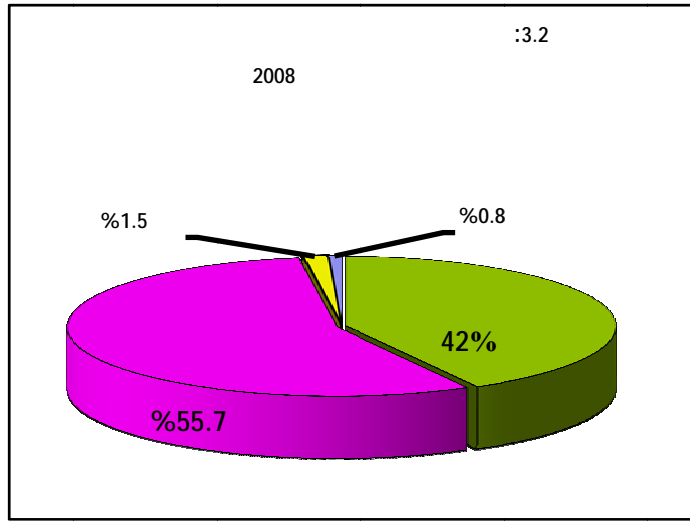
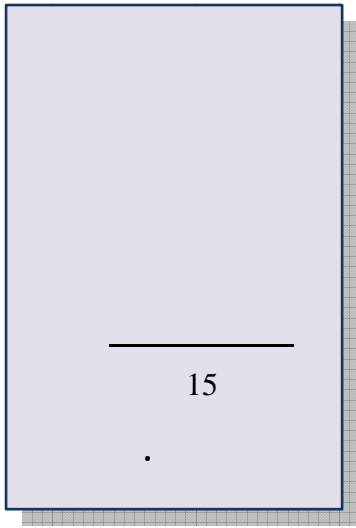
%19.1

%18.6)

.(2.7)

(

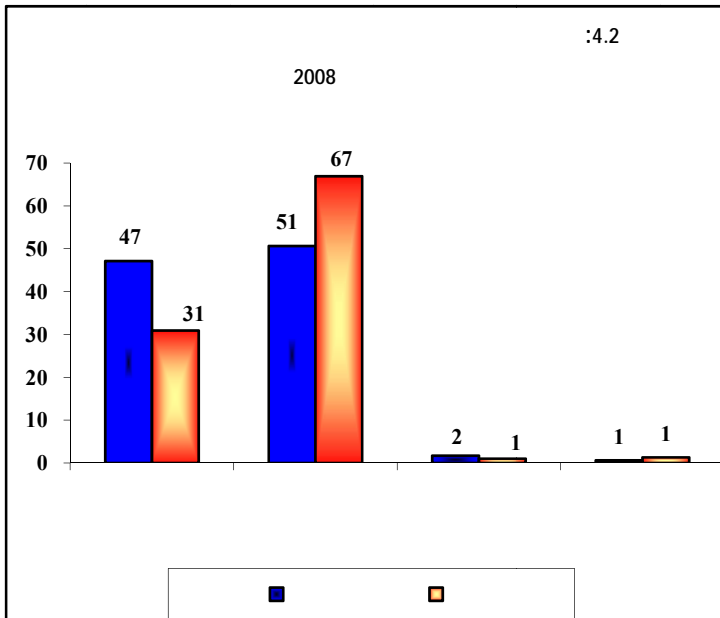
(2.7)



(%55.7) 15

11

(1.7)

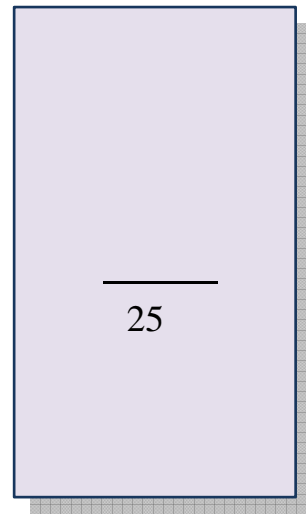
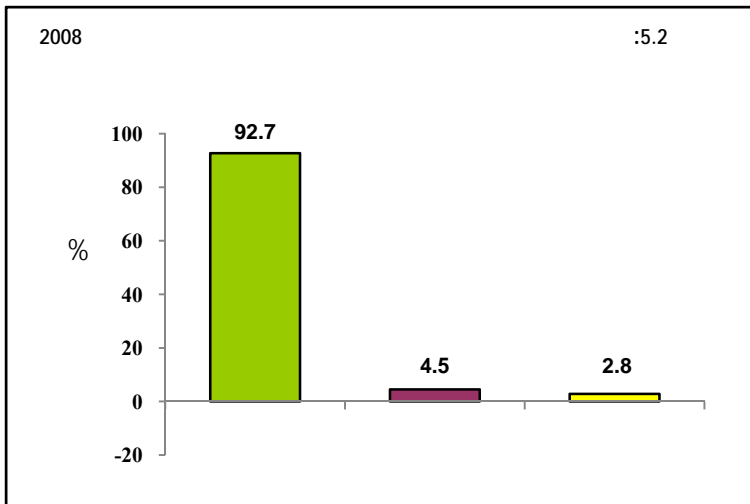


(2.7) %63 %77

)

%23

(%37

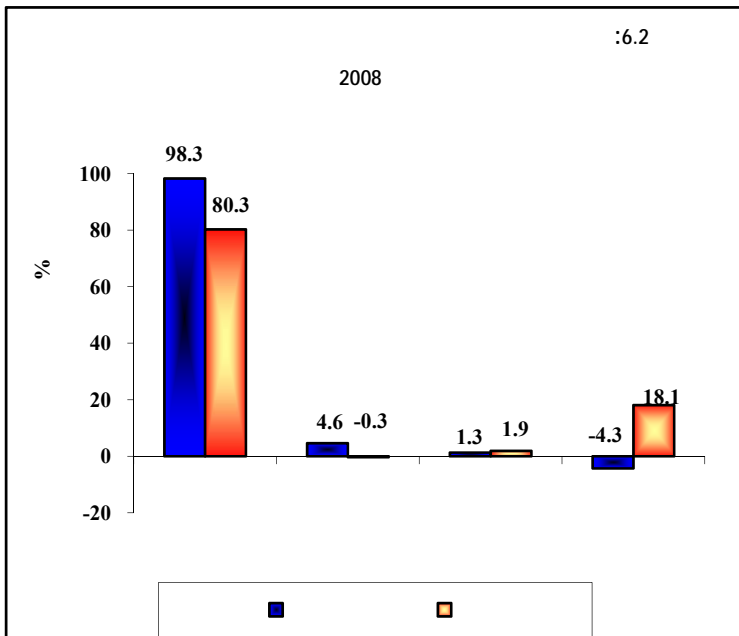


(25)

%93

%3.1

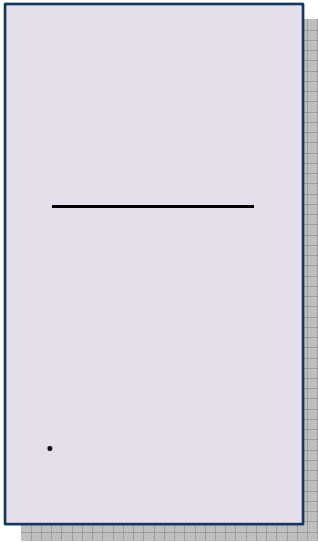
.(1.7) %2.8



%98

%80

.(2.7) %18



(6)

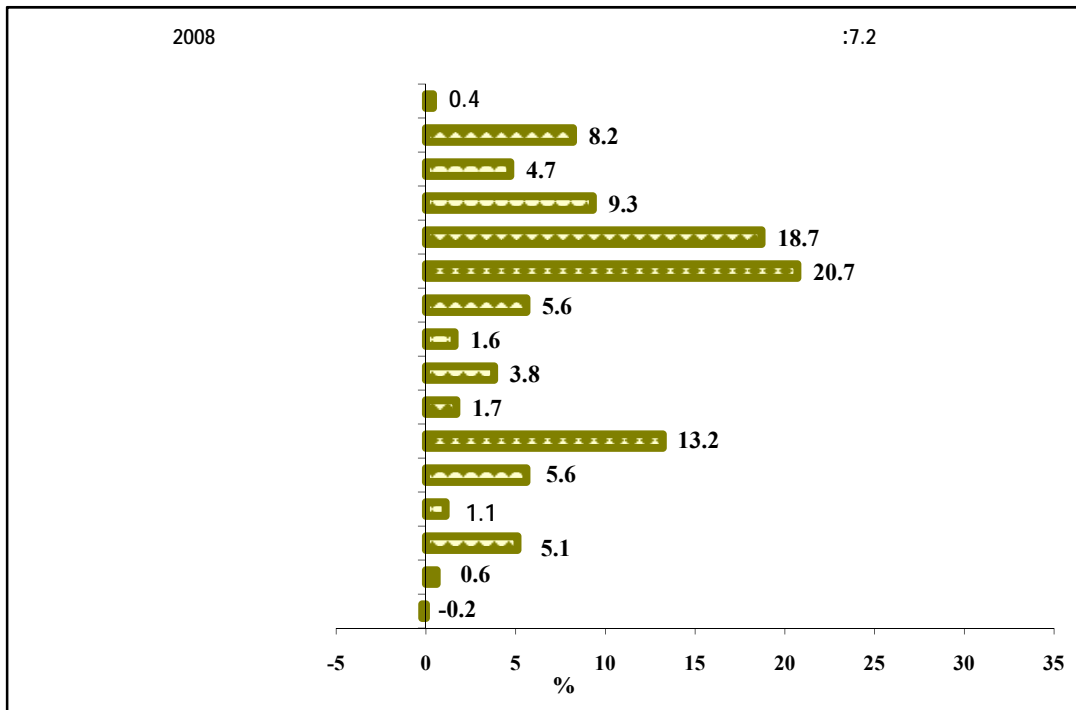
%21

5

%13

4

.(3.7)



5)

%28 (

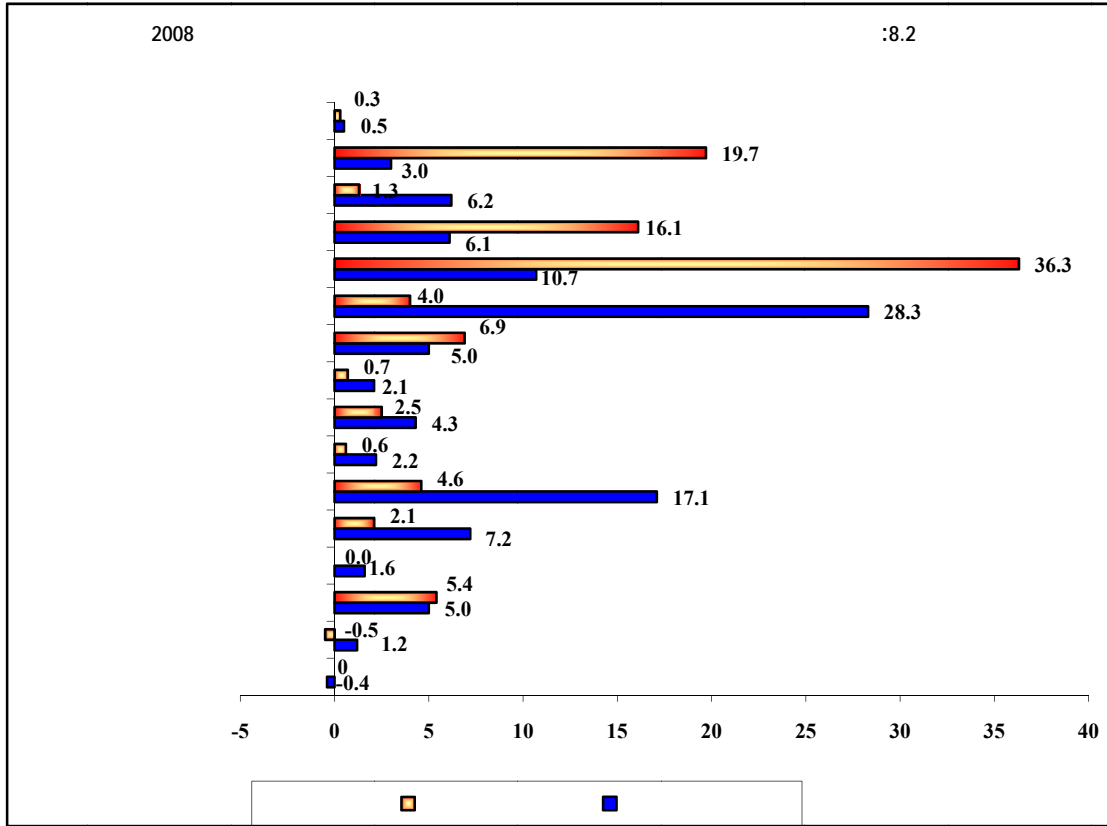
%10.7 %17.1

%36

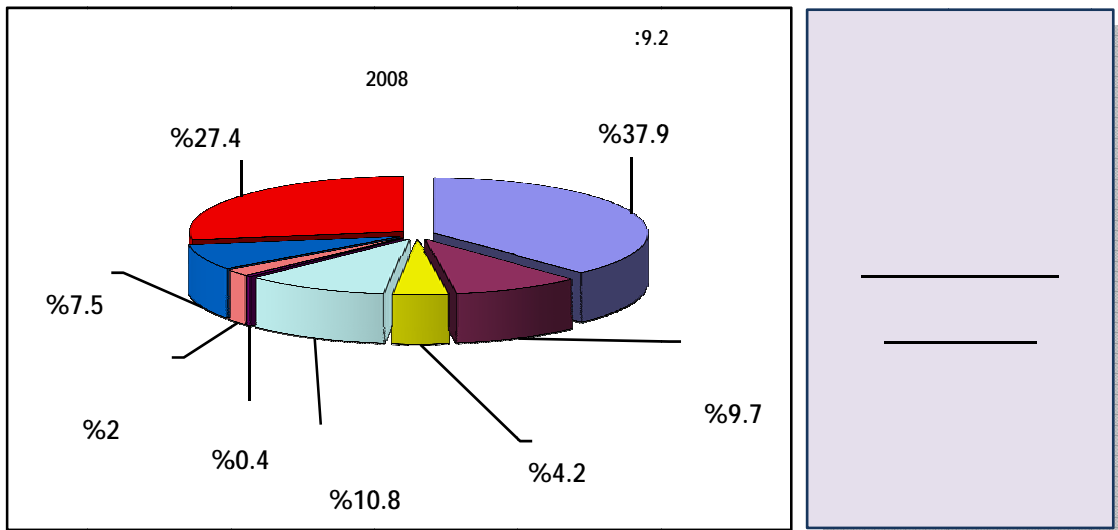
%20

%16

.(4.7) %5.4 %6.9



.(3.7) %27 (%38 7)

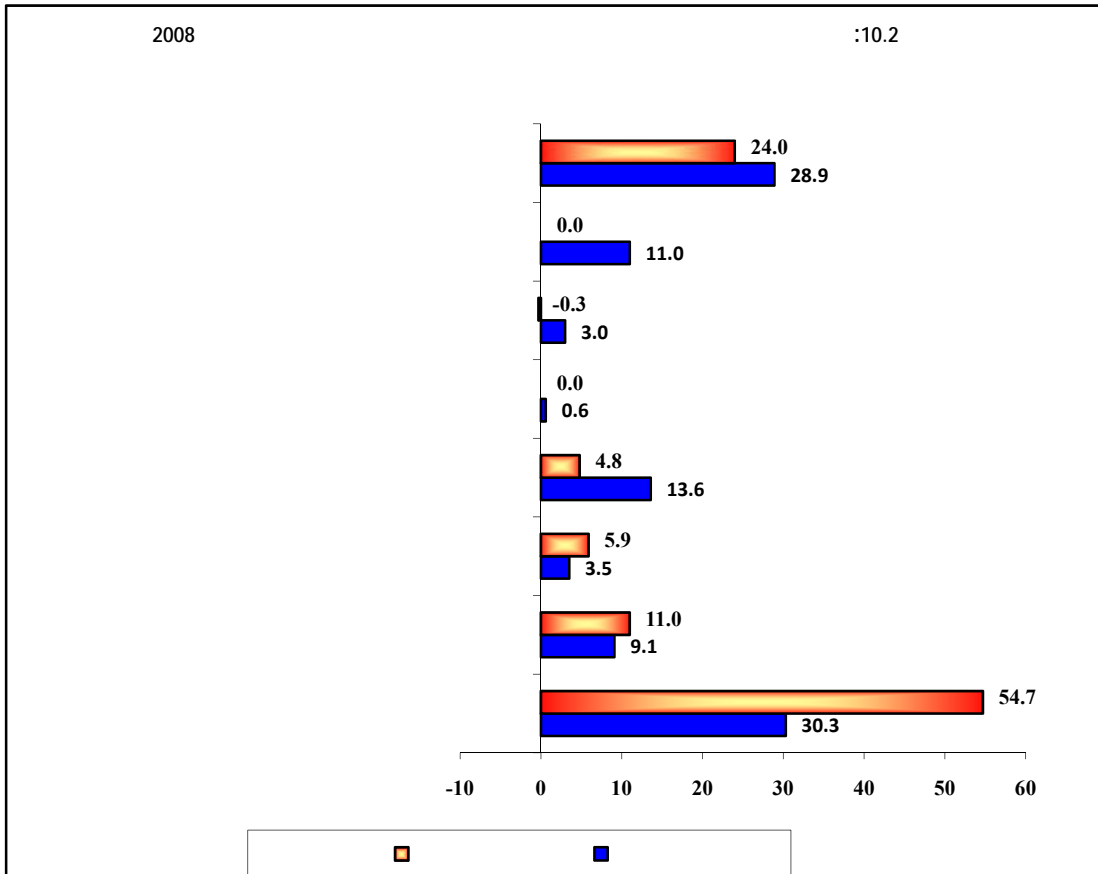


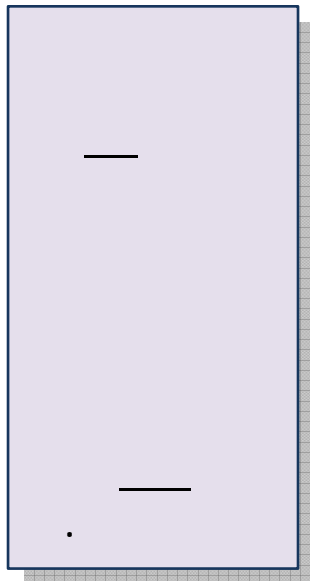
%55

.%24

%30

.(4.7) %29





6

7

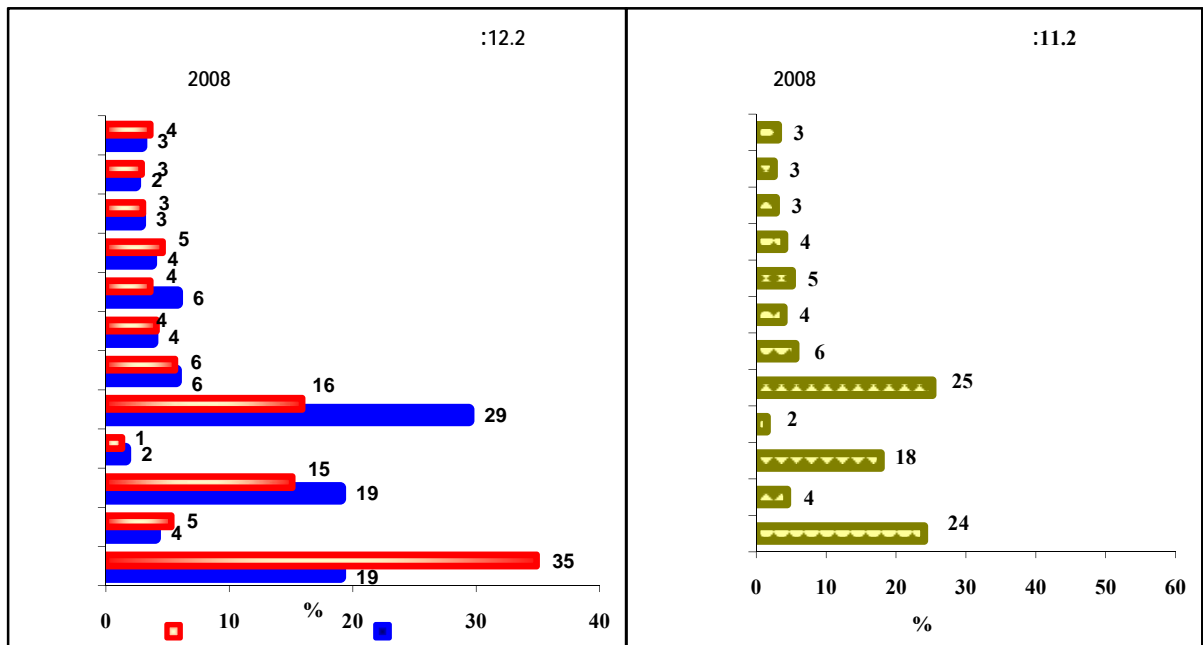
%25

%24

%5.1 %5.6 %17.8

%1.5

.(5.7)



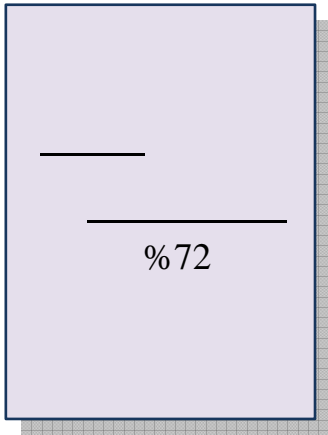
2007

.%24 %39.2

2008

(36.3% 36.7% 37.5% 45.6%)

19.8%

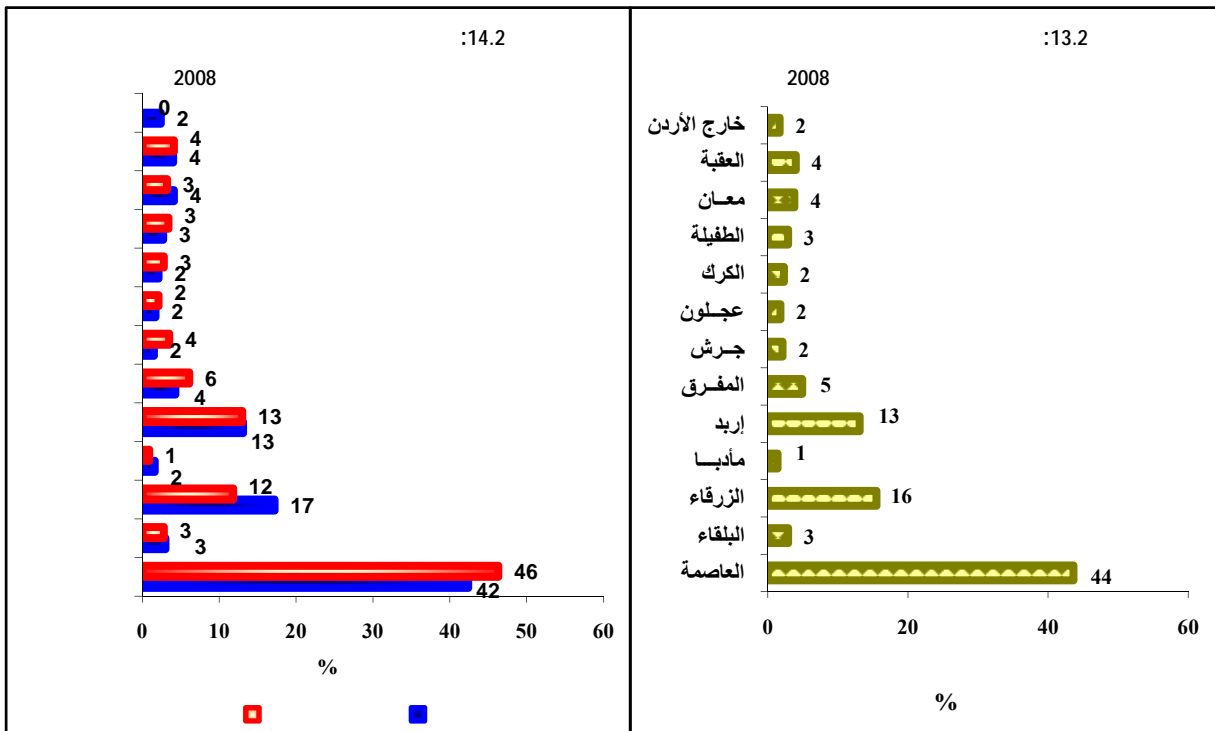


12

44%

16%

(5.7)

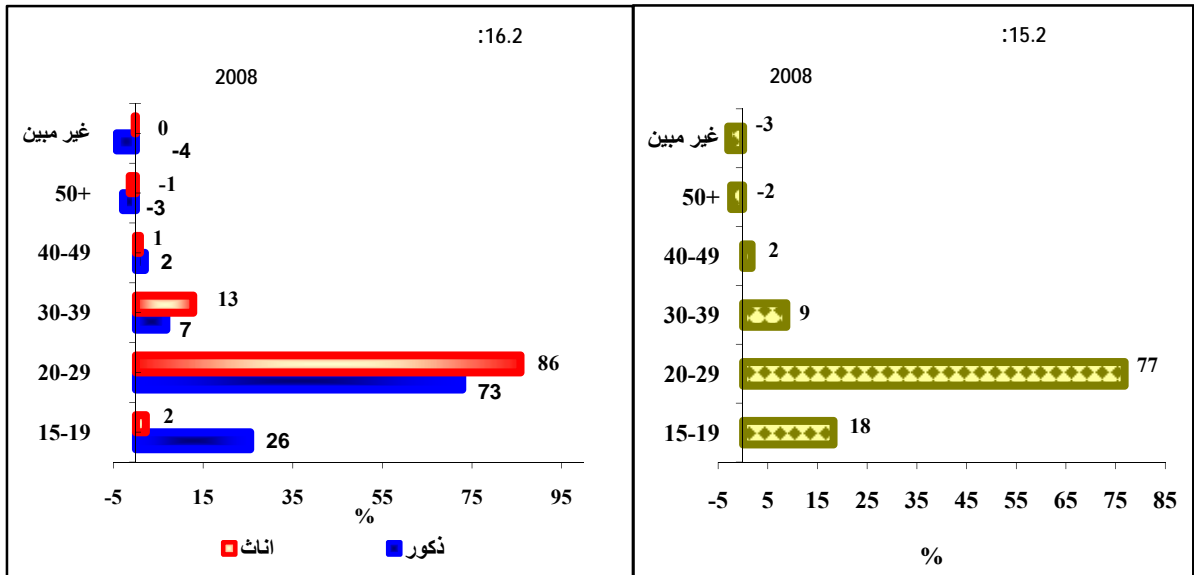
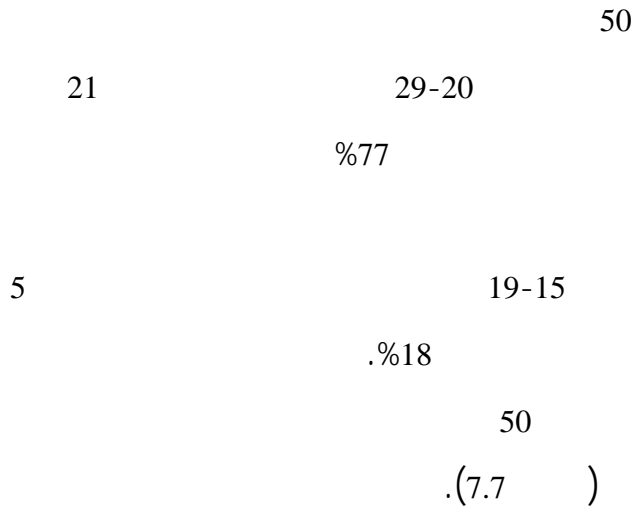
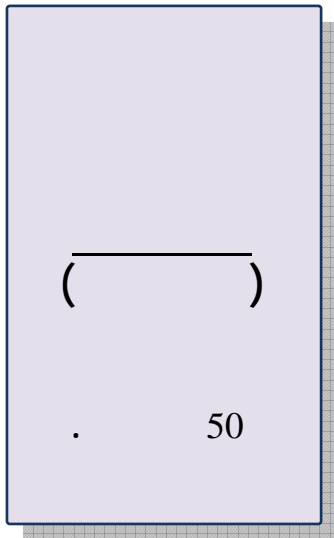


2008 2007

%46.3

%42

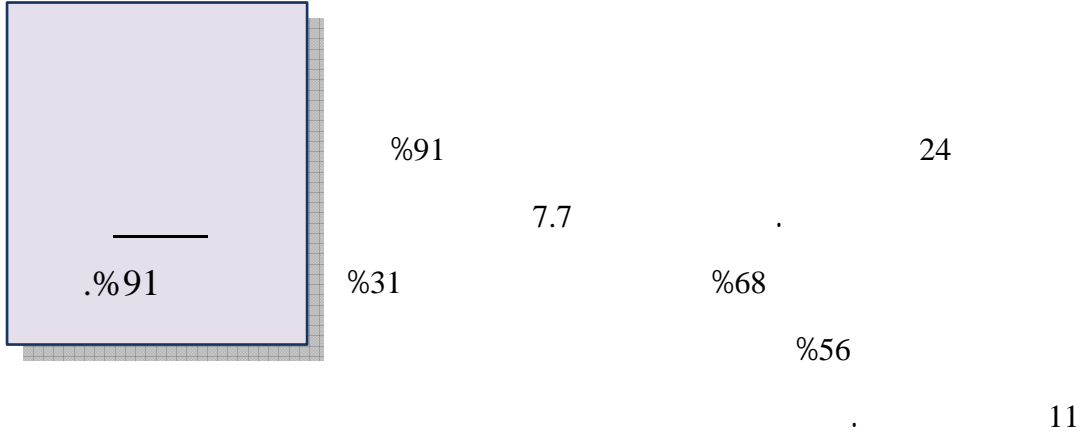
(6.7)



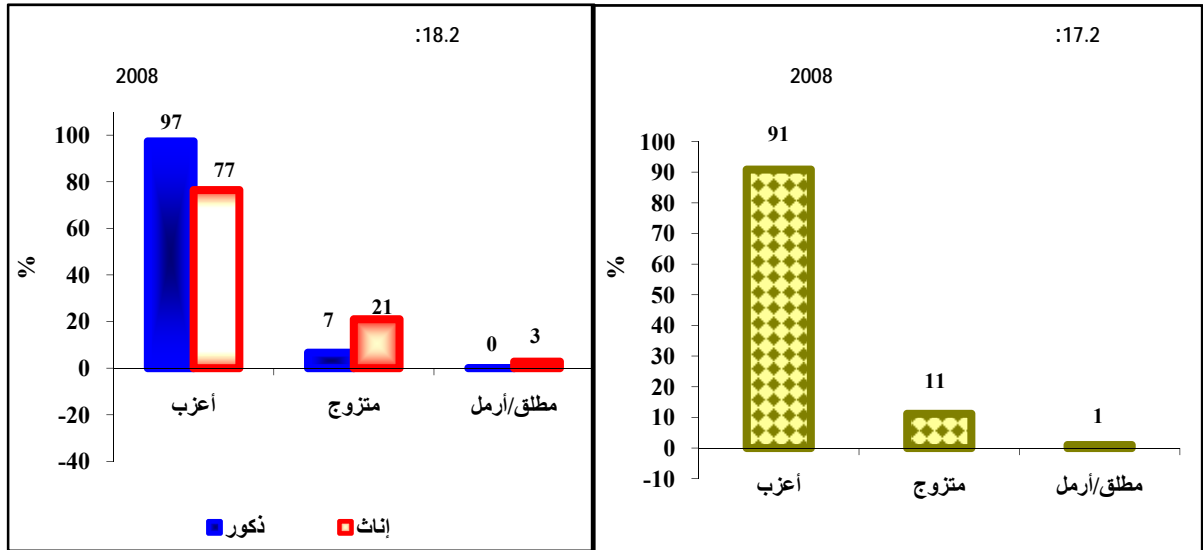
39-30

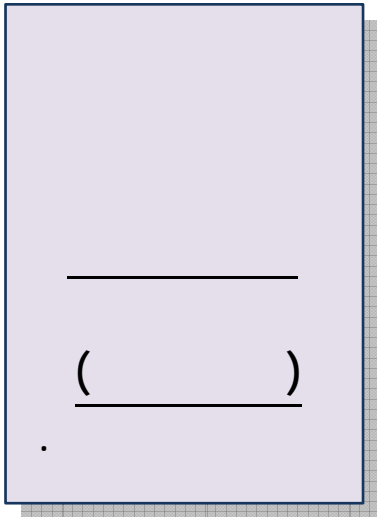
29-20

19-15 29-20
) 29-20
 %2 %26 19-15 .(
 .
 .(8.7) 50



.(8.7) %21



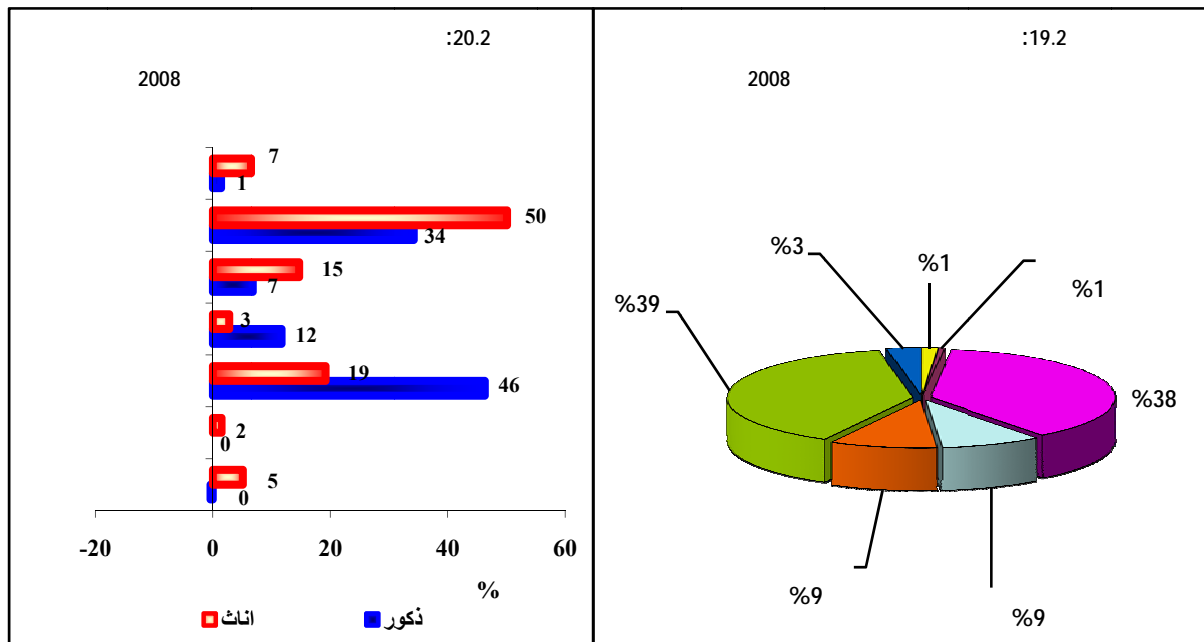


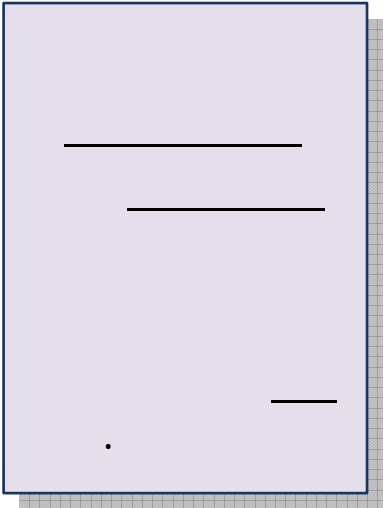
(11) %42
 (10) %38
 (3) %9.3
 (7.7) ()

%58

%57

(8.7)



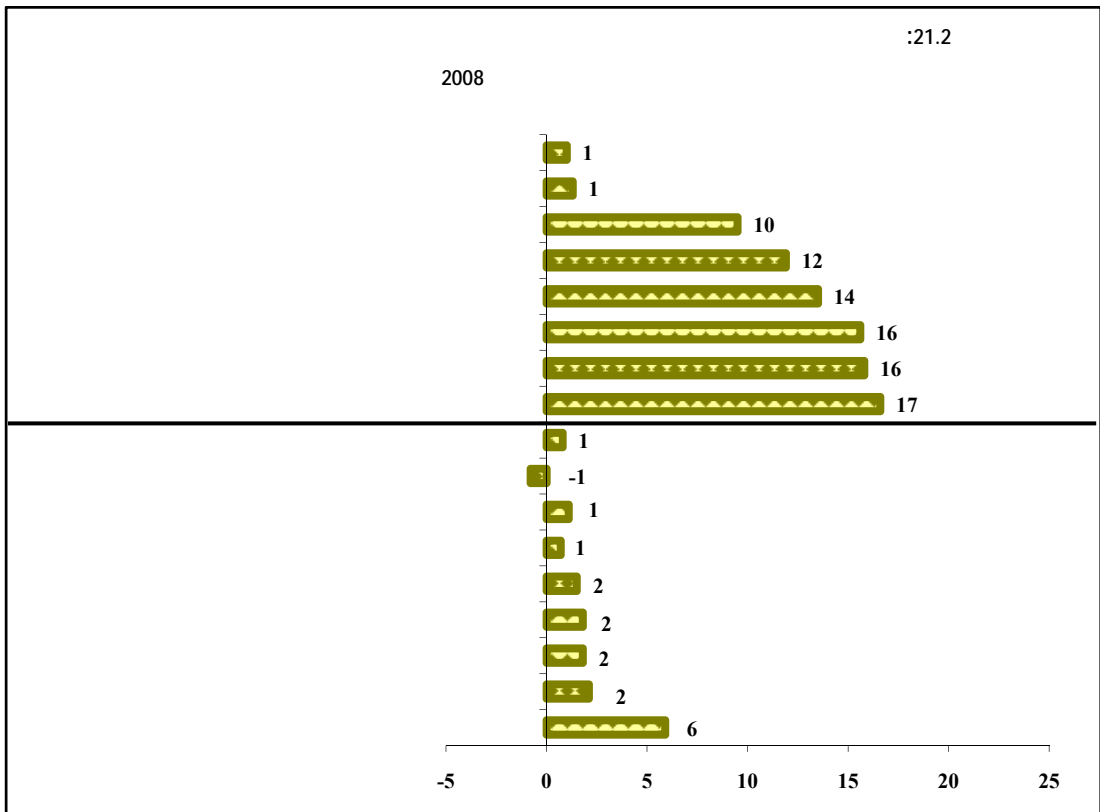


3)

.(3) (

335

()
.(9.7)

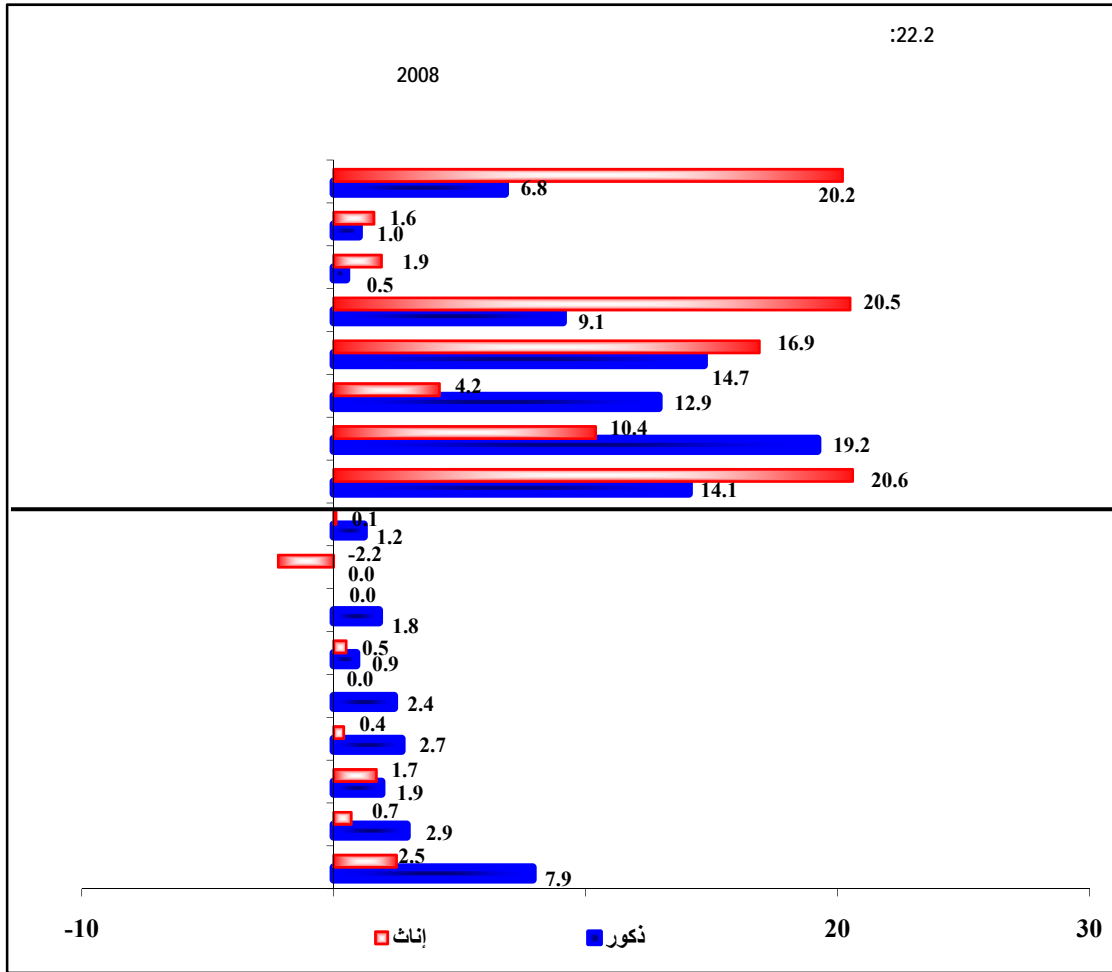


(%14.1 %14.7 %19.2)

(%20.2 %20.5)

%20.6

(10.7)



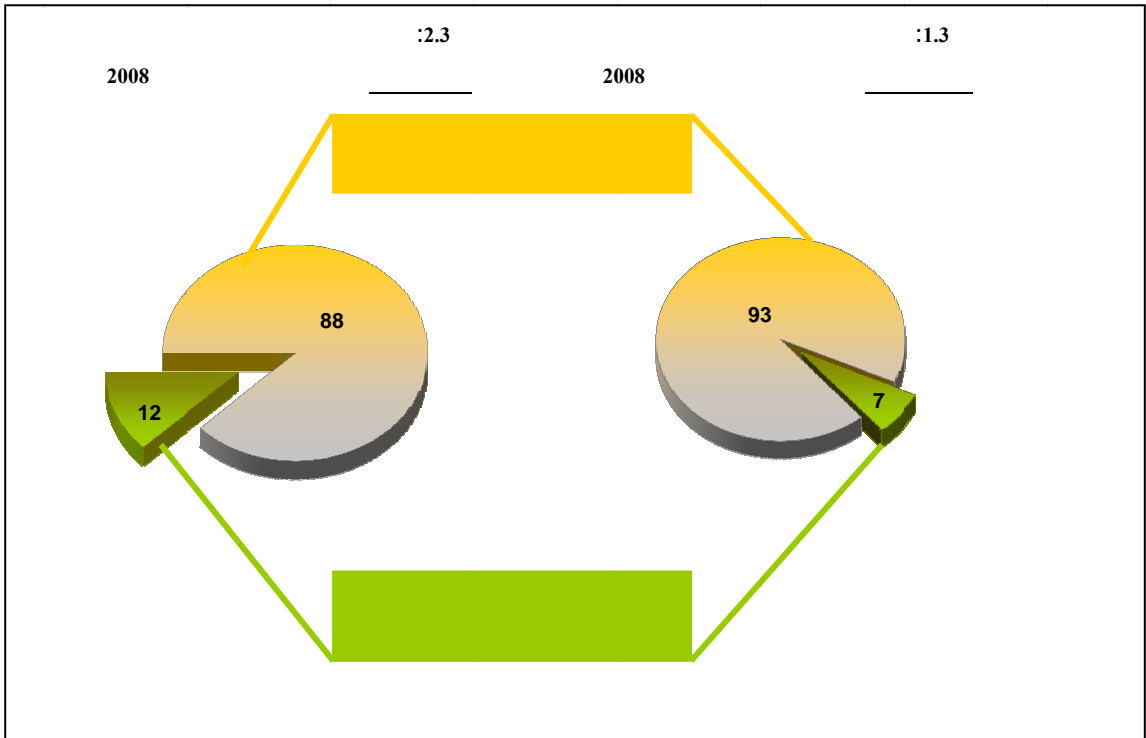
.3

()¹
25

2008

%7

.(11.7) %12



:1.3

2008 2007

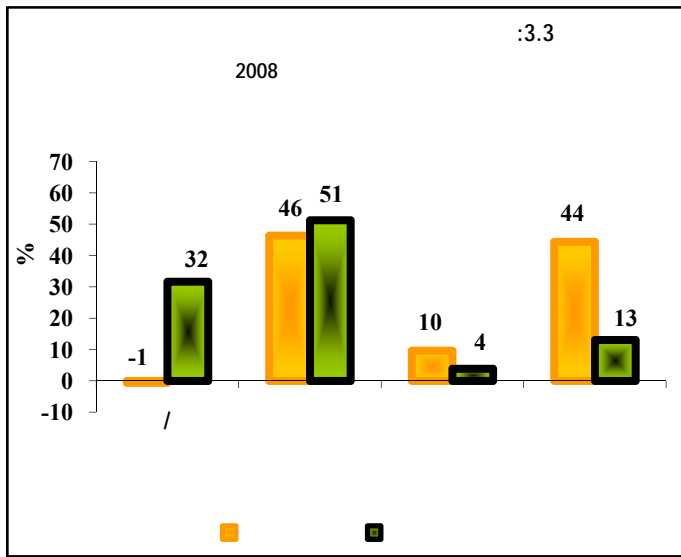
2008		2007		
7.3	92.7	14.8	85.2	
12.3	87.7	21.1	78.9	

2008 2007

(%84.4)

307

.%16



:3.3

2008

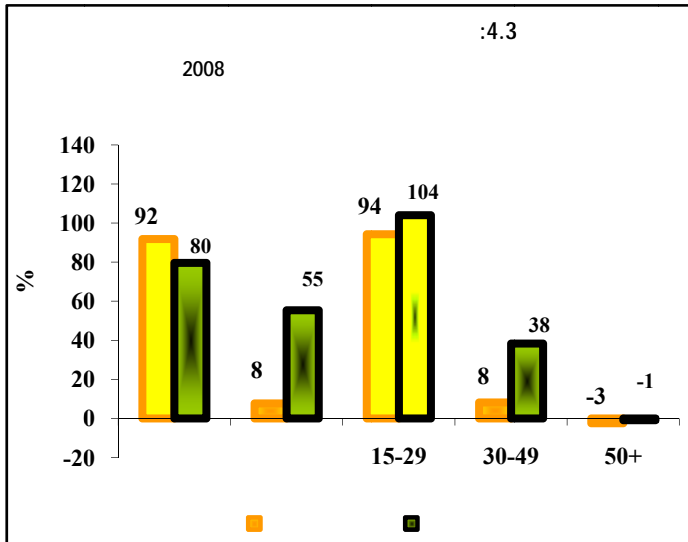
%83

%25

%8

%32

.(11.7) 136



30
 (%104)
 .%94
 %80
 .(11.7)

(%22.1)

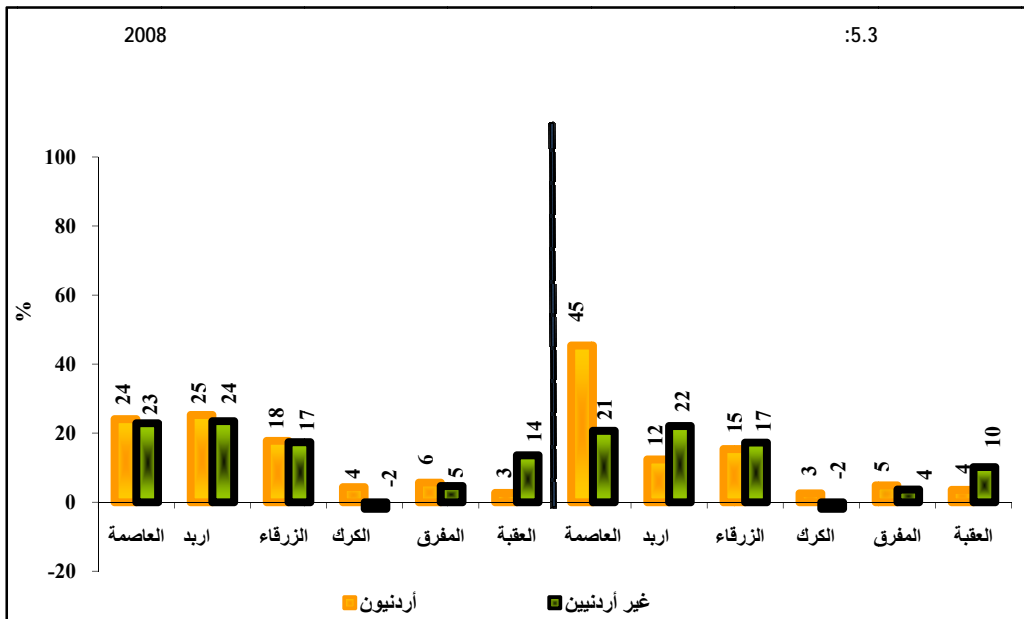
(%22.9)

(%20.7)

(%23.5)

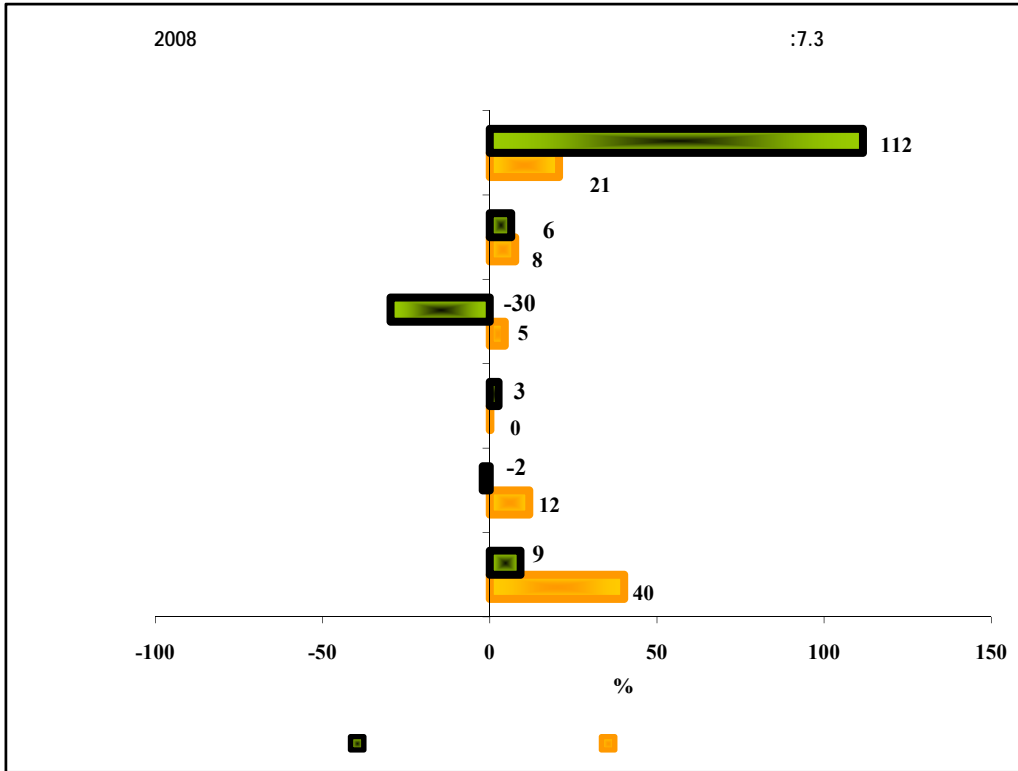
%17

.(12.7)



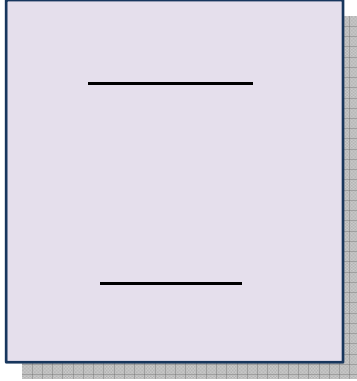
%9 %112

.(13.7)



.4

%20



.(%0.1 %0.9 %1.3)

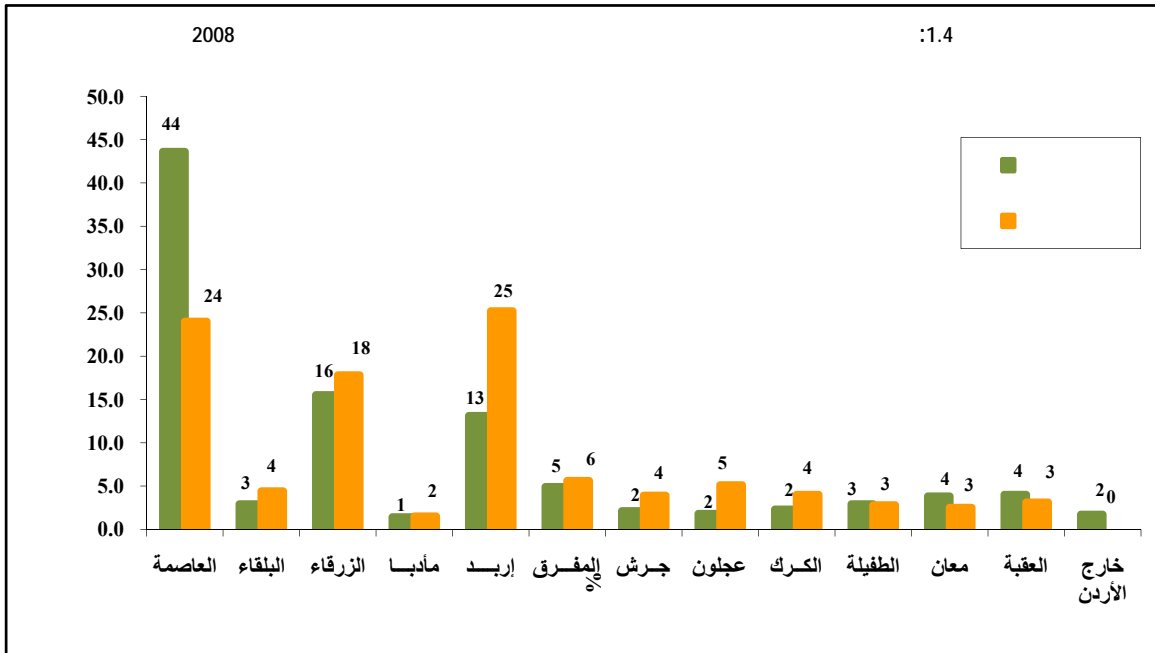
%12.1

.(16.7)

(%99)

%12

.(%18)



%59

(%67.1)

.(%9)

(%91)

(%95)

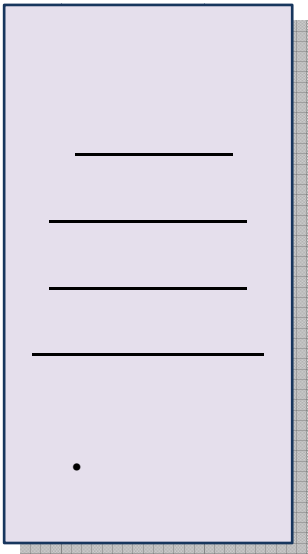
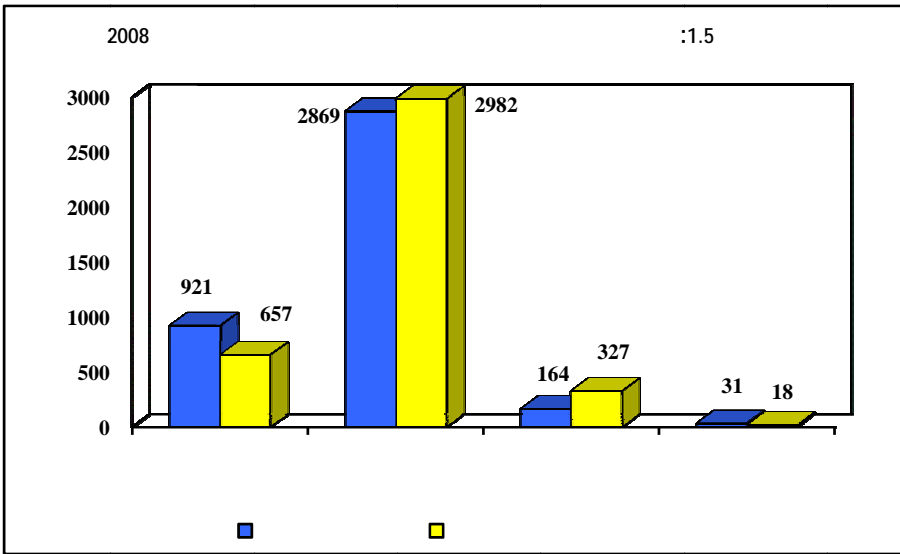
.(1.4) (%33)

(%88)

.(3.4 2.4)

.5

2008

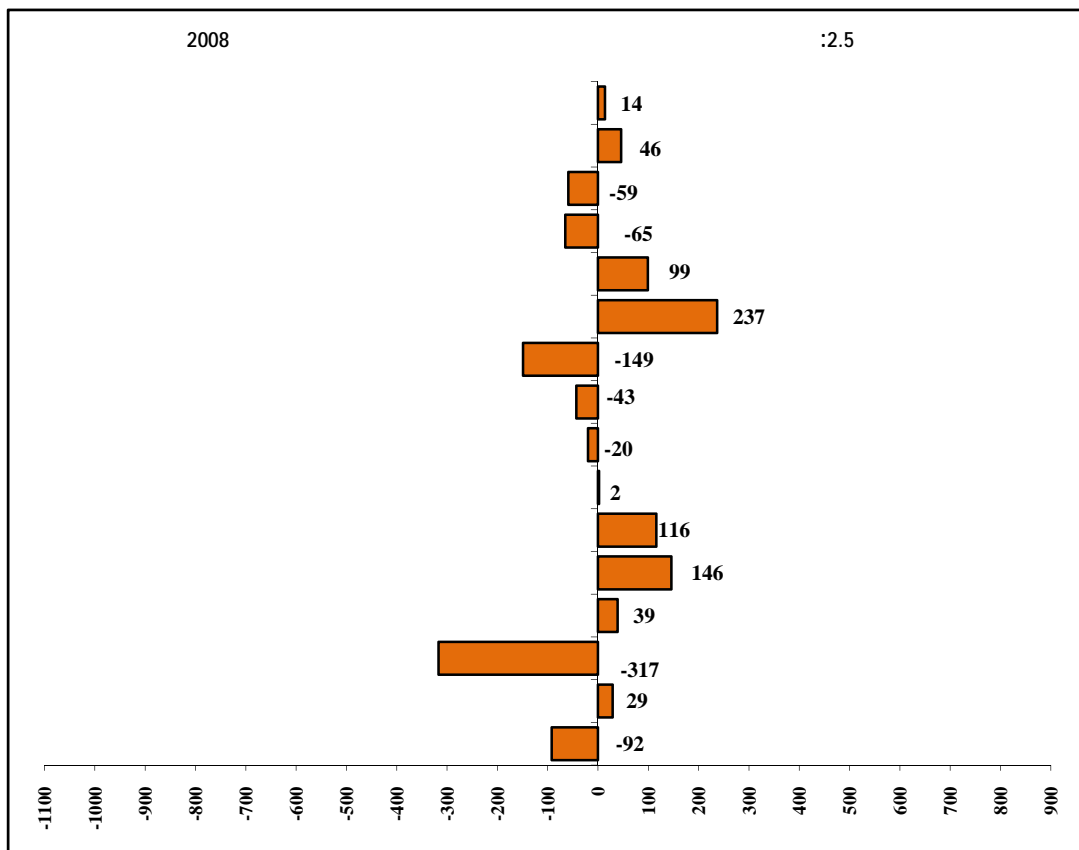


4 2008

.(18.7)

.(17.7)

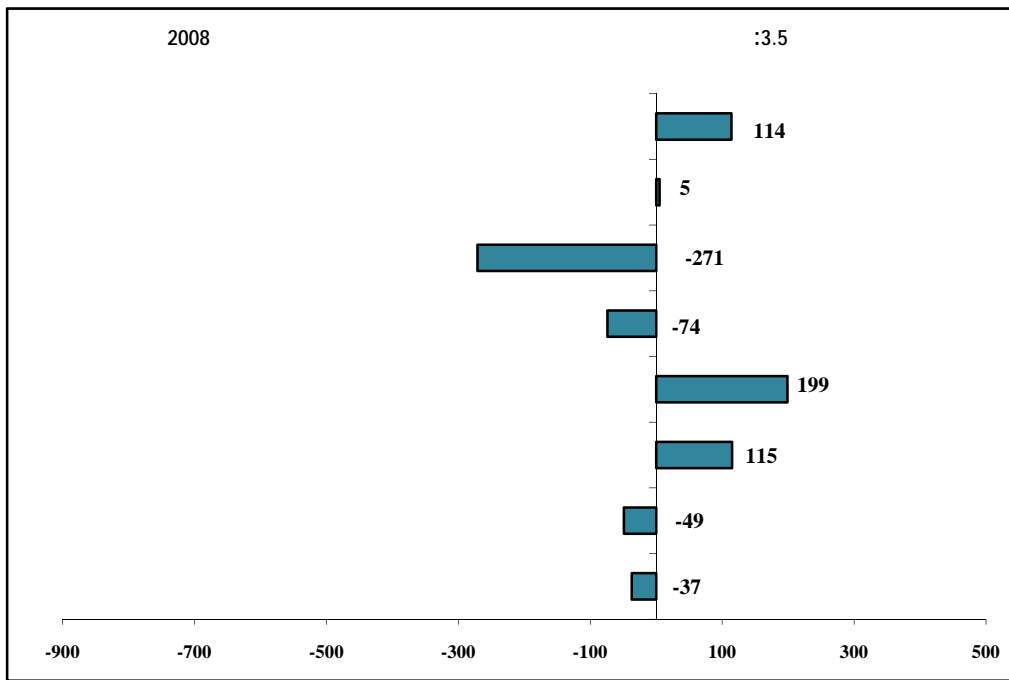
.(18.7)



(17.7)

2008

.(18.7)



.6

.

.%25

%.18

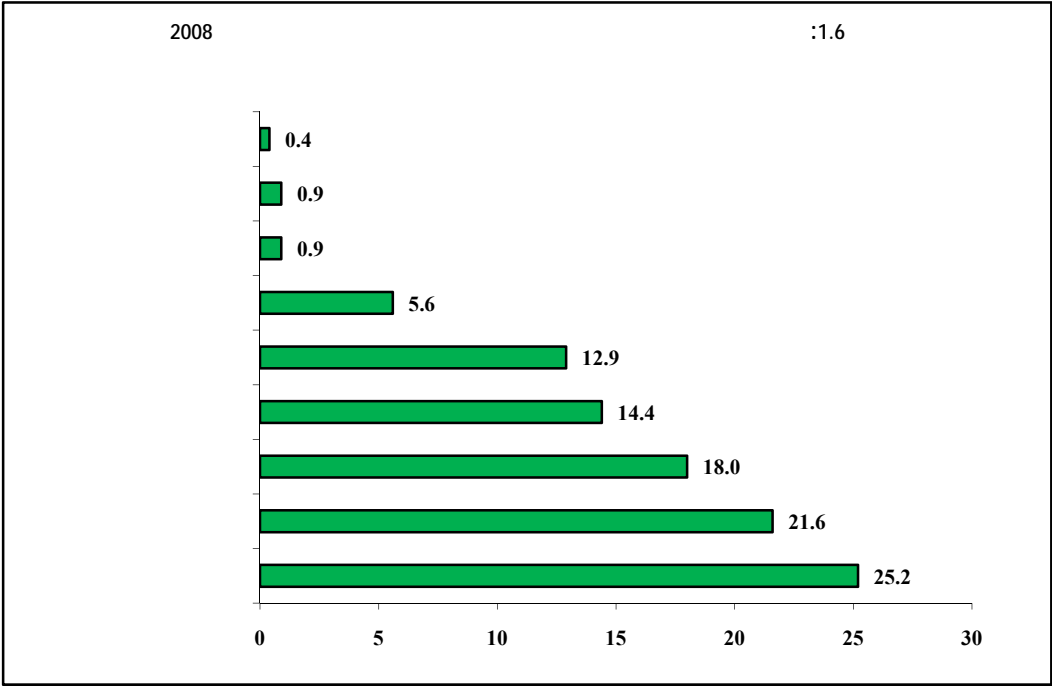
%22

)

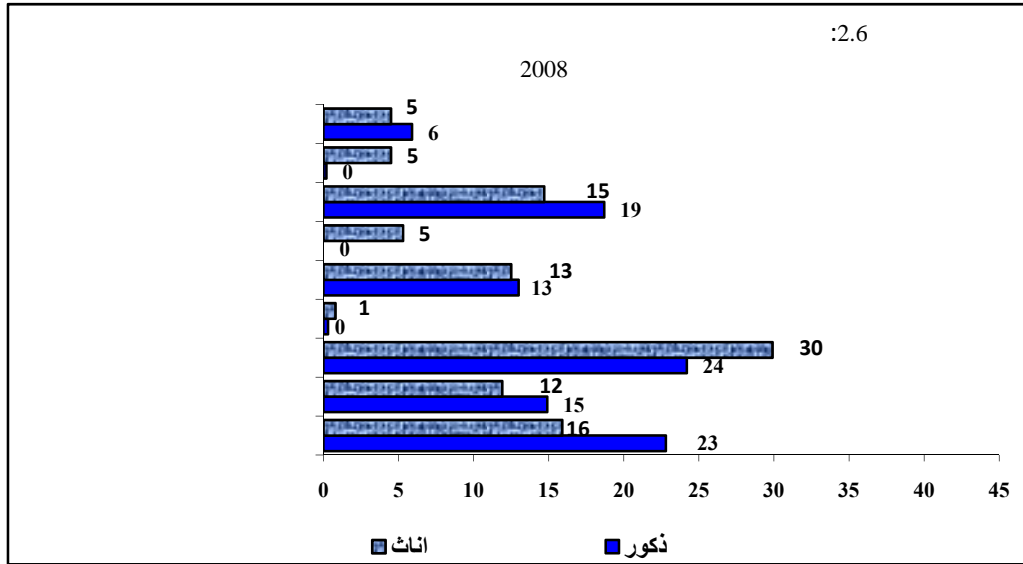
%.14

.(19.7)%13

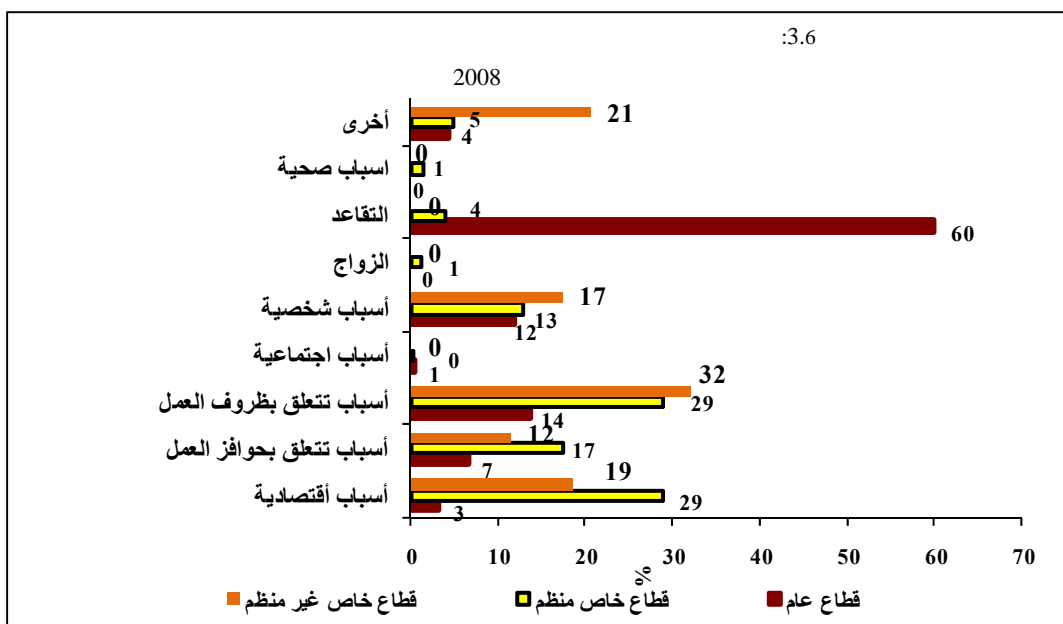
(



30%
 15%
 23%
 16%
 24%
 (19.7)
 19%



60%
 14% (20.7)



.7

:1.7

2008

%		%		%		
68.6	18474	83.4	16813	75.0	35287	
31.4	8444	16.6	3348	25.0	11792	
42.0	11303	25.4	5112	34.9	16415	
55.7	14998	68.3	13775	61.1	28773	
1.5	403	6.1	1231	3.5	1634	
0.8	214	0.2	43	0.5	257	
92.7	24951	90.4	18216	91.7	43167	
3.1	822	1.4	274	2.3	1095	
0.1	40	0.2	38	0.2	78	
0.1	32	0.0	0	0.1	32	
1.2	332	1.5	308	1.4	640	
2.8	742	6.6	1324	4.4	2066	
100.0	26919	100.0	20160	100.0	47079	

()

2008

:2.7

%		%		%		
12.9	3476	16.5	1396	11.3	2080	
20.0	5372	18.8	1590	20.5	3782	
18.6	5012	19.9	1684	18.0	3328	
18.6	4994	15.7	1325	19.9	3669	
19.1	5141	18.5	1563	19.4	3578	
10.9	2926	10.5	887	11.0	2039	
42.0	11303	30.9	2610	47.1	8693	
55.7	14998	66.9	5646	50.6	9352	
1.5	403	1.0	81	1.7	323	
0.8	214	1.3	108	0.6	107	
92.7	24951	80.3	6783	98.3	18167	
3.1	822	-0.3	-24	4.6	845	
0.1	40	-0.4	-38	0.4	78	
0.1	32	0.0	0	0.2	32	
1.2	332	2.3	193	0.7	138	
2.8	742	18.1	1529	-4.3	-787	
100.0	26919	100.0	8444	100.0	18474	

()

2008

%		%		%		
-0.2	-67	2.3	459	0.8	393	
0.6	173	0.8	162	0.7	335	
5.1	1379	21.7	4382	12.2	5761	
1.1	293	0.7	148	0.9	441	
5.6	1499	5.3	1073	5.5	2572	
13.2	3543	13.6	2744	13.4	6287	
1.7	447	4.9	983	3.0	1429	
3.8	1010	7.5	1512	5.4	2522	
1.6	439	3.8	762	2.6	1202	
5.6	1502	7.0	1414	6.2	2915	
20.7	5565	15.4	3106	18.4	8671	
18.7	5039	7.7	1555	14.0	6594	
9.3	2494	2.9	595	6.6	3088	
4.7	1263	5.3	1072	5.0	2336	
8.2	2220	0.7	151	5.0	2371	
0.4	120	0.2	43	0.3	163	
37.9	10214	13.3	2681	27.4	12896	
9.7	2612	11.7	2350	10.5	4962	
4.2	1136	6.5	1310	5.2	2445	
10.8	2914	14.4	2909	12.4	5822	
0.4	113	0.6	126	0.5	238	
2.0	530	22.0	4427	10.5	4957	
7.5	2029	12.6	2533	9.7	4562	
27.4	7371	19.0	3824	23.8	11195	
100.0	26919	100.0	20160	100.0	47079	

.

:

41

/ 2008

%		%		%		
-0.2	-67	0.0	-2	-0.4	-65	
0.6	173	-0.5	-45	1.2	218	
5.1	1379	5.4	460	5.0	918	
1.1	293	0.0	0	1.6	293	
5.6	1499	2.1	177	7.2	1322	
13.2	3543	4.6	385	17.1	3158	
1.7	447	0.6	48	2.2	399	
3.8	1010	2.5	213	4.3	797	
1.6	439	0.7	61	2.1	379	
5.6	1502	6.9	584	5.0	917	
20.7	5565	4.0	336	28.3	5230	
18.7	5039	36.3	3065	10.7	1974	
9.3	2494	16.1	1358	6.1	1136	
4.7	1263	1.3	114	6.2	1149	
8.2	2220	19.7	1664	3.0	556	
0.4	120	0.3	28	0.5	92	
37.9	10214	54.7	4617	30.3	5597	
9.7	2612	11.0	931	9.1	1681	
4.2	1136	5.9	496	3.5	639	
10.8	2914	4.8	406	13.6	2508	
0.4	113	0.0	-2	0.6	115	
2.0	530	-0.3	-29	3.0	559	
7.5	2029	0.0	0	11.0	2029	
27.4	7371	24.0	2025	28.9	5347	
100.0	26919	100.0	8444	100.0	18474	

. () :

2008

%		%		%		
24.0	6462	43.9	8851	32.5	15313	
4.4	1187	3.9	792	4.2	1979	
17.8	4791	7.9	1597	13.6	6388	
1.5	398	4.1	828	2.6	1226	
25.2	6783	15.8	3183	21.2	9967	
5.6	1514	3.6	725	4.8	2240	
3.9	1057	6.5	1312	5.0	2369	
5.1	1366	1.9	381	3.7	1747	
4.0	1068	6.8	1375	5.2	2444	
2.8	762	0.9	182	2.0	945	
2.5	683	1.7	335	2.2	1018	
3.1	848	3.0	598	3.1	1446	
43.6	11732	54.8	11045	48.4	22776	
2.9	792	2.4	480	2.7	1272	
15.5	4183	8.3	1668	12.4	5851	
1.4	364	1.5	302	1.4	666	
13.1	3517	11.3	2285	12.3	5802	
4.9	1307	3.7	750	4.4	2057	
2.1	563	4.1	825	2.9	1388	
1.8	487	0.7	132	1.3	619	
2.3	622	6.1	1226	3.9	1847	
2.9	787	1.0	201	2.1	988	
3.8	1024	1.4	282	2.8	1305	
4.0	1090	4.3	869	4.2	1959	
1.7	450	0.5	97	1.2	547	
100.0	26919	100.0	20160	100.0	47079	

. () :

%		%		%		
24.0	6462	34.9	2949	19.0	3513	
4.4	1187	5.3	445	4.0	741	
17.8	4791	15.1	1278	19.0	3512	
1.5	398	1.3	107	1.6	290	
25.2	6783	15.9	1345	29.4	5438	
5.6	1514	5.6	470	5.7	1044	
3.9	1057	4.1	350	3.8	707	
5.1	1366	3.6	303	5.8	1064	
4.0	1068	4.6	392	3.7	677	
2.8	762	3.0	252	2.8	511	
2.5	683	2.9	245	2.4	438	
3.1	848	3.6	308	2.9	540	
43.6	11732	46.3	3907	42.4	7824	
2.9	792	2.8	238	3.0	554	
15.5	4183	11.8	1000	17.2	3184	
1.4	364	0.9	78	1.6	286	
13.1	3517	13.0	1095	13.1	2422	
4.9	1307	6.1	514	4.3	793	
2.1	563	3.5	293	1.5	270	
1.8	487	2.1	180	1.7	307	
2.3	622	2.8	233	2.1	389	
2.9	787	3.4	286	2.7	501	
3.8	1024	3.2	272	4.1	752	
4.0	1090	4.1	348	4.0	742	
1.7	450	0.0	0	2.4	450	
100.0	26919	100.0	8444	100.0	18474	

()

2008

%		%		%		
18.2	4891	3.0	611	11.7	5501	19-15
76.8	20687	35.9	7235	59.3	27922	29-20
8.7	2343	29.8	6006	17.7	8348	39-30
1.7	454	18.0	3637	8.7	4092	49-40
-1.9	-503	5.9	1187	1.5	684	59-50
-0.5	-139	1.5	312	0.4	172	+60
-3.0	-814	5.8	1173	0.8	359	
90.9	24463	37.1	7475	67.8	31938	
11.2	3007	56.4	11368	30.5	14375	
0.9	244	0.6	118	0.8	361	
0.1	19	0.1	26	0.1	45	
-3.0	-814	5.8	1173	0.8	359	
1.4	364	1.2	243	1.3	607	
0.5	124	2.9	587	1.5	711	
37.8	10173	57.7	11629	46.3	21803	
8.9	2402	13.8	2776	11.0	5178	
9.3	2502	10.3	2081	9.7	4583	
39.2	10545	11.5	2328	27.3	12872	
3.0	809	2.6	515	2.8	1325	
100.0	26919	100.0	20160	100.0	47079	

. () :

2008

:8.7

%		%		%		
18.2	4891	2.2	189	25.5	4702	19-15
76.8	20687	85.8	7242	72.8	13445	29-20
8.7	2343	12.8	1081	6.8	1261	39-30
1.7	454	0.9	79	2.0	375	49-40
-1.9	-503	-1.4	-120	-2.1	-383	59-50
-0.5	-139	0.0	0	-0.8	-139	+60
-3.0	-814	-0.3	-27	-4.3	-787	
90.9	24463	76.5	6461	97.4	18001	
11.2	3007	21.0	1774	6.7	1233	
0.9	244	2.6	217	0.1	27	
0.1	19	0.2	19	0.0	0	
-3.0	-814	-0.3	-27	-4.3	-787	
1.4	364	5.1	432	-0.4	-68	
0.5	124	1.5	131	0.0	-7	
37.8	10173	19.2	1619	46.3	8554	
8.9	2402	2.8	237	11.7	2165	
9.3	2502	14.7	1242	6.8	1260	
39.2	10545	50.1	4234	34.2	6310	
3.0	809	6.5	550	1.4	260	
100.0	26919	100.0	8444	100.0	18474	

()

2008

%		%		%		
5.9	953	15.1	1160	8.8	2113	أدبي
2.1	335	5.4	413	3.1	748	علمي
1.8	297	0.0	0	1.2	297	ادارة معلومات
0.7	118	0.0	0	0.5	118	تمريضي
1.5	241	7.4	568	3.4	808	صناعي
1.8	291	2.1	158	1.9	450	زراعي
1.1	181	0.0	0	0.8	181	فندقي
-0.8	-138	2.1	161	0.1	23	تجميل
0.8	125	4.1	317	1.8	441	أخرى
11.9	1942	5.6	434	9.9	2376	
13.5	2195	7.4	571	11.5	2766	
16.6	2697	24.1	1854	19.0	4550	
15.8	2573	11.2	865	14.4	3438	
9.5	1549	10.4	804	9.8	2353	
1.0	168	0.3	21	0.8	189	
15.6	2529	3.6	278	11.7	2807	
1.3	203	1.3	98	1.3	302	
100.0	16257	100.0	7701	100.0	23958	

*

()

2008

%		%		%		
5.9	953	2.5	158	7.9	794	أدبي
2.1	335	0.7	45	2.9	290	علمي
1.8	297	1.7	109	1.9	188	إدارة معلومات
0.7	118	0.5	32	0.9	86	تربوي
1.5	241	0.0	0	2.4	241	صناعي
1.8	291	0.4	22	2.7	269	زراعي
1.1	181	0.0	0	1.8	181	فندقي
-0.8	-138	-2.2	-138	0.0	0	تجميل
0.8	125	0.1	8	1.2	116	أخرى
11.9	1942	20.2	1264	6.8	677	
13.5	2195	20.5	1281	9.1	914	
16.6	2697	20.6	1289	14.1	1408	
15.8	2573	10.4	652	19.2	1921	
9.5	1549	4.2	261	12.9	1288	
1.0	168	1.9	117	0.5	51	
15.6	2529	16.9	1059	14.7	1469	
1.3	203	1.6	103	1.0	100	
100.0	16257	100.0	6262	100.0	9995	

*

()

2008

%		%			
15.6	307	72.8	18167		
84.4	1661	27.2	6783		
21.8	429	-0.3	-65		
9.9	195	-0.3	-71		
26.5	522	38.7	9651		
24.8	488	7.7	1914		
3.9	76	9.7	2426		
11.7	231	41.3	10314		
1.4	28	3.1	782		
79.7	1569	91.8	22894		
55.4	1090	7.7	1917		
4.0	78	0.7	165		
2.3	45	-0.1	-26		
-41.4	-814	0.0	0		
8.8	173	18.9	4717	19-15	
95.2	1873	75.4	18814	29-20	
25.5	503	7.4	1840	39-30	
12.8	251	0.8	203	49-40	
0.0	0	-2.0	-503	59-50	
-0.9	-19	-0.5	-121	+60	
2.7	53	45.1	11250		
89.3	1757	53.1	13240		
7.3	143	1.0	260		
0.8	15	0.8	200		
100.0	1968	100.0	24951		

. () :

%		%		
22.9	450	24.1	6011	
4.8	95	4.4	1091	
17.4	343	17.8	4447	
3.9	77	1.3	321	
23.5	463	25.3	6321	
4.7	92	5.7	1422	
10.5	206	3.4	851	
2.2	43	5.3	1324	
-1.9	-37	4.4	1105	
2.2	44	2.9	718	
0.4	8	2.7	675	
13.6	269	2.7	665	
20.7	408	45.4	11324	
9.3	183	2.4	609	
17.3	341	15.4	3842	
3.9	77	1.2	287	
22.1	435	12.4	3082	
3.7	73	4.9	1233	
9.8	193	1.5	370	
2.2	43	1.8	445	
-1.9	-37	2.6	658	
1.5	30	3.0	757	
1.1	22	4.0	1002	
10.2	200	3.6	890	
0.0	0	1.8	450	
100.0	1968	100.0	24951	

. ()

:

%		%		
5.3	105	-0.7	-172	
-0.9	-19	0.8	192	
-29.1	-574	7.8	1952	
0.0	0	1.2	293	
7.0	137	5.5	1361	
2.9	58	14.0	3485	
-2.4	-47	2.0	494	
3.5	69	3.8	940	
3.0	60	1.5	380	
-2.6	-52	6.2	1553	
0.0	0	22.3	5565	
4.0	79	19.9	4960	
2.0	40	9.8	2454	
3.0	59	4.8	1204	
104.2	2051	0.7	169	
0.0	0	0.5	120	
9.2	182	40.2	10033	
-0.1	-2	10.5	2614	
2.0	40	4.4	1095	
-2.1	-41	11.8	2955	
2.6	52	0.2	61	
-29.7	-585	4.5	1115	
6.4	126	7.6	1902	
111.6	2197	20.7	5175	
100.0	1968	100.0	24951	

. () :

2008

:14.7

-67	0	-21	0	0	126	-172	
173	0	-19	0	0	0	192	
1379	-814	66	32	0	143	1952	
293	0	0	0	0	0	293	
1499	0	-1	0	51	88	1361	
3543	0	2	0	27	28	3485	
447	0	0	0	0	-47	494	
1010	0	69	0	0	0	940	
439	0	60	0	0	0	380	
1502	0	0	0	0	-52	1553	
5565	0	0	0	0	0	5565	
5039	0	51	0	0	28	4960	
2494	0	18	0	0	22	2454	
1263	0	61	0	-38	36	1204	
2220	1556	45	0	0	450	169	
120	0	0	0	0	0	120	
26919	742	332	32	40	822	24951	

()

18474	-787	138	32	78	845	18167	
-65	0	-19	0	0	126	-172	
218	0	-19	0	0	0	237	
918	-787	47	32	0	143	1484	
293	0	0	0	0	0	293	
1322	0	-1	0	51	88	1185	
3158	0	2	0	27	28	3100	
399	0	0	0	0	-47	446	
797	0	69	0	0	0	727	
379	0	0	0	0	0	379	
917	0	0	0	0	0	917	
5230	0	0	0	0	0	5230	
1974	0	34	0	0	0	1941	
1136	0	0	0	0	22	1114	
1149	0	25	0	0	36	1089	
556	0	0	0	0	450	106	
92	0	0	0	0	0	92	
8444	1529	193	0	-38	-24	6783	
-2	0	-2	0	0	0	0	
-45	0	0	0	0	0	-45	
460	-27	19	0	0	0	468	
0	0	0	0	0	0	0	
177	0	0	0	0	0	177	
385	0	0	0	0	0	385	
48	0	0	0	0	0	48	
213	0	0	0	0	0	213	
61	0	60	0	0	0	1	
584	0	0	0	0	-52	636	
336	0	0	0	0	0	336	
3065	0	18	0	0	28	3019	
1358	0	18	0	0	0	1340	
114	0	36	0	-38	0	116	
1664	1556	45	0	0	0	63	
28	0	0	0	0	0	28	

2008

:16.7

	%	%	
19.6	24.0	43.6	
-1.5	4.4	2.9	
-2.3	17.8	15.5	
-0.1	1.5	1.4	
-12.1	25.2	13.1	
-0.7	5.6	4.9	
-1.8	3.9	2.1	
-3.3	5.1	1.8	
-1.7	4.0	2.3	
0.1	2.8	2.9	
1.3	2.5	3.8	
0.9	3.1	4.0	
1.7		1.7	
	100.0	100.0	100 =

264	657	921	
-113	2982	2869	
-163	327	164	
13	18	31	
-92	115	23	
29	45	75	
-317	740	423	
39	19	58	
146	228	374	
116	630	746	
2	241	243	
-20	378	358	
-43	340	297	
-149	283	133	
237	340	577	
99	230	329	
-65	179	115	
-59	199	140	
46	18	64	
14	18	31	
-37	1054	1016	
-49	260	211	
115	219	333	
199	493	693	
-74	88	14	
-271	603	331	
5	717	721	
114	551	665	
	3985	3985	

. () :

2008

17	246	114	544	131	790		
0	-114	343	2640	343	2526		
0	-163	0	327	0	164		
-18	31	18	0	0	31		
-19	-73	19	97	0	23		
-45	75	45	0	0	75		
19	-336	47	693	66	357		
0	39	0	19	0	58		
52	94	0	228	52	321		
-40	156	40	590	0	746		
0	2	0	241	0	243		
38	-58	0	378	38	320		
-29	-14	29	311	0	297		
-12	-137	86	196	75	59		
22	215	26	315	47	530		
106	-8	26	205	132	197		
-52	-13	117	62	65	50		
-22	-37	22	177	0	140		
-18	64	18	0	0	64		
-18	31	18	0	0	31		
0	-37	294	759	294	722		
0	-49	76	184	76	135		
0	115	38	181	38	295		
0	199	0	493	0	693		
-19	-55	19	69	0	14		
0	-271	26	577	26	306		
0	5	0	717	0	721		
19	95	21	530	40	625		
		474	3511	474	3511		

2008

:19.7

%		%		%		
21.6	4362	15.9	532	22.8	3830	
14.4	2904	11.9	398	14.9	2506	
25.2	5071	29.9	1001	24.2	4070	
0.4	85	0.8	28	0.3	57	
12.9	2600	12.5	420	13.0	2180	
0.9	176	5.3	176	0.0	0	
18.0	3635	14.7	493	18.7	3142	
0.9	189	4.5	149	0.2	40	
5.6	1138	4.5	150	5.9	988	
100.0	20160	100.0	3348	100.0	16813	

()

:

2008

:20.7

%		%		%		%		%			
21.6	4362	0.0	0	18.5	228	28.8	3971	3.2	163		
14.4	2904	41.9	18	11.5	141	17.4	2404	6.7	342		
25.2	5071	0.0	0	32.1	395	28.9	3982	13.6	694		
0.4	85	0.0	0	0.0	0	0.4	58	0.5	27		
12.9	2600	0.0	0	17.4	214	12.9	1779	11.9	607		
0.9	176	0.0	0	0.0	0	1.3	176	0.0	0		
18.0	3635	58.1	25	0.0	0	4.0	548	59.9	3062		
0.9	189	0.0	0	0.0	0	1.4	189	0.0	0		
5.6	1139	0.0	0	20.6	253	4.9	669	4.2	217		
100.0	20160	100.0	43	100.0	1231	100.0	13775	100.0	5112		

()

;

2008 2007

.8

2008 2007

:1.8

2008		2007		
68.6	81.9	68.0	76.7	
31.4	18.1	32.0	23.3	
42.0	40.9	30.4	33.0	
57.2	58.6	68.8	65.9	
0.8	-0.4	0.8	1.1	
92.7	93.0	85.2	79.3	
3.1	6.3	4.9	8.0	
0.1	1.1	0.4	1.2	
0.1	0.2	0.0	0.7	
1.2	2.2	0.6	1.1	
2.8	-2.8	8.9	9.7	
18.2	21.2	14.6	17.5	19-15
76.8	71.6	76.0	68.0	29-20
8.7	14.5	10.4	13.8	39-30
1.7	3.1	2.1	2.8	49-40
-1.9	0.4	-2.0	-0.9	59-50
-0.5	-1.6	-1.0	-0.6	+60
-3.0	-9.1	-0.2	-0.5	
26919	37909	34101	36004	100 =

2008		2007		
1.4	3.2	3.1	2.8	
0.5	1.8	2.3	2.2	
37.8	46.9	42.1	50.9	
8.9	16.1	11.9	15.8	
9.3	9.6	5.3	7.1	
39.2	21.7	34.3	20.4	
3.0	0.9	1.0	0.9	
26919	37909	34101	36004	
5.9	16.2	8.6	16.1	
2.1	4.8	4.0	2.9	
0.2	2.2	1.5	5.8	
0.7	1.3	1.3	0.0	
1.5	3.9	3.3	7.3	
1.1	0.5	1.1	0.8	
3.4	4.6	2.8	3.0	*
11.9	4.8	7.6	0.8	
13.5	6.3	15.7	4.3	
16.6	20.8	12.8	29.1	
15.8	12.8	16.8	12.4	
9.5	8.8	12.6	7.1	
1.0	0.7	3.8	2.5	
15.6	12.4	5.9	5.6	
1.3	0.2	2.2	2.3	
16257	18269	17904	15877	

*

2008 2007

:3.8

2008		2007		
24.0	49.1	39.2	44.6	
4.4	2.6	5.7	5.5	
17.8	4.9	13.4	10.8	
1.5	1.7	2.3	1.6	
25.2	23.2	19.4	18.7	
5.6	6.2	5.5	5.4	
3.9	2.4	3.2	3.3	
5.1	3.7	2.7	2.6	
4.0	3.1	4.5	3.5	
2.8	0.9	2.1	1.5	
2.5	1.3	1.2	1.0	
3.1	0.9	0.7	1.5	
43.6	61.4	56.8	58.5	
2.9	1.9	3.6	3.5	
15.5	14.9	10.7	14.6	
1.4	1.5	1.6	-0.1	
13.1	6.6	11.9	10.2	
4.9	5.1	4.7	2.6	
2.1	0.8	2.0	1.9	
1.8	1.4	1.2	1.4	
2.3	2.1	1.7	1.4	
2.9	0.7	1.6	0.6	
3.8	1.6	1.9	1.7	
4.0	1.6	2.2	2.2	
1.7	0.5	0.1	1.5	
26919	37909	34101	36004	

2008 2007

:4.8

2008		2007		
90.9	88.9	85.3	78.8	
11.2	19.3	14.2	20.8	
0.9	1.1	0.7	0.7	
0.1	-0.3	0.1	0.3	
0.0	0.0	0.0	0.0	
-3.0	-9.1	-0.2	0.5	
37.9	20.3	33.8	18.2	
9.7	8.7	8.2	6.0	
4.2	6.0	0.8	5.1	
10.8	17.1	13.7	9.6	
0.4	0.6	0.9	1.3	
2.0	1.0	6.6	8.4	
7.5	6.0	7.3	8.7	
27.4	40.3	28.6	42.6	
26919	37909	34101	36004	100 =

2008 2007

:5.8

2008		2007		
-0.2	0.7	2.6	2.8	
0.6	0.5	-0.1	0.2	
5.1	2.3	7.9	8.3	
1.1	0.3	1.6	1.6	
5.6	4.1	2.4	6.9	
13.2	15.8	17.8	12.3	
1.7	3.4	1.5	2.2	
3.8	5.7	2.4	6.6	
1.6	4.0	2.6	3.3	
5.6	6.4	7.2	4.8	
20.7	30.7	12.2	26.6	
18.7	3.2	19.2	1.3	
9.3	7.1	5.5	3.8	
4.7	7.2	5.6	4.7	
8.2	8.3	11.1	13.4	
0.4	0.4	0.5	1.2	
26919	37909	34101	36004	

2008 2007

:6.8

2008		2007		
21.6	30.0	15.9	23.2	
14.4	9.6	11.3	9.1	
25.2	27.1	24.8	26.4	
0.4	1.0	0.5	1.2	
12.9	15.5	10.9	18.4	
0.9	0.7	0.2	0.9	
18.0	12.3	19.2	10.9	
0.9	3.0	7.0	***	
***	***	4.9	5.1	/
5.6	0.8	5.3	4.7	
20160	27274	26484	29387	100 =