



...





<b>ii</b>	
<b>iv</b>	
<b>v</b>	
<b>vii</b>	
<b>x</b>	
<b>1</b>	
<b>2</b>	
<b>4</b>	
<b>4</b>	
<b>6</b>	:
7	1-1
10	2-1
10	1-2-1
18	2-2-1
22	3-2-1
24	3-1
24	1-3-1
28	2-3-1
30	3-3-1
31	4-1
31	1-4-1
35	2-4-1
37	3-4-1
38	5-1
41	6-1



<b>44</b>	:	
45		1-2
46		2-2
48		3-2
50		4-2
<b>53</b>		
<b>56</b>		



		1-1
7	( : ) 1997-1994	
		2-1
8	(% : : ) 2007	
		3-1
10	( : ) 2007-1997	
	2007-1997	4-1
11	(% : : )	
		5-1
16		
23		6-1
25	2007-1997	7-1
25	( : ) 2007-1997	8-1
28		9-1
30		10-1
	2007-1997	11-1
32		( : )
33	2007-1997	12-1
35		13-1
37		14-1
		1-15
39	( / ) 2007-1997	
47	2007-1997	1-2
49	2007-1997	2-2
51	2007-1997	3-2



9			1-1
			2-1
14		( : : )	
			3-1
20		2007-2002	
23			4-1
			5-1
26			2007-1997
			6-1
29		2007-2002	
31			7-1
			8-1
34			2007-1997
			9-1
36		2007-2002	
38			10-1
			11-1
39		( / ) 2007-1997	
			12-1
40		( / ) 2007-1997	
			13-1
40		( / ) 2007-1997	
42	2025-2010		14-1
43	2025-2010		15-1
47		2007-1997	1-2
			2-2
48			2007-2002
49		2007-1997	3-2



			4-2
50		2007-2002	
51	2007-1997		5-2
			6-2
52		2007-2002	





2007

1997

:

:

.1

2007-1997

2001-1997

.2007-2002

		.2
		.3
		.4
2007-2002		.5
		.6
	2007-1997	
2001-1997	0.025	.7
	.0.004- 2007-2002	
	2007-2002	.8
		.9
	%17	.10

%100  
2007 %98 2004 2003 2002 .11

.  
.2007-2002 .12

2004 %45 2007  
.30

2006 2005  
2007

%100 .13

%100  
2025-2010 .14



## **Abstract**

### **Analysis of Livestock and Horticultural Statistics and their Relationship to Food Security in Jordan**

This study aims to analyze the situation of food security in Jordan and its future prospects; through precisely investigating the sectors of plant production and animal production. The study is mainly based on the results of agricultural census in 2007 and compared to the agricultural census of 1997, which was conducted by the Department of Statistics in Jordan.

This paper follows the scientific approach that compares and analyzes both the plant production and animal production sectors in the different years; in terms of change using percentages and growth rates of the two sectors. The plant production sector has been divided into three categories: vegetables, fruit trees and field crops. The products selected in each of these categories were those the most consumed in Jordan, according to the food budget estimates published by the Department of Statistics. The vegetable crops included tomatoes, melons, potatoes, eggplant, onions, and cucumbers. The fruit trees included olive, grapes, apples, and citrus fruits. While, the field crops included wheat, barley, chickpeas, and lentils. The livestock sector was studied according to in the two periods 1997-2001 and 2002-2007. The changes and the growth rates in the numbers of livestock as well as the production of red meat was also studied. The animal production included white meat, red meat and other products. The study came out with the following results:

1- A high fluctuation was noticed in the vegetables area yields in Jordan from the crops of: tomatoes, cucumbers, melons, potatoes, eggplant and onions in the period 1997-2007. The change in the area tends to be negative in the period

1997-2001, while this change was perceived as more positive in the period 2002-2007. This discrepancy in the acreage of crops causes difficulties in the formulation of food security policies in Jordan. The change happening on the size of the production of the different crops analyzed and its impact can be reflected on the planning for food security policies.

2- There exists a variation in the production of vegetable crops as compared between the different years, which could affect the food security of these crops.

3- In previous vegetable crops, it appeared that there is a difference between the area percentage and production, with the exception of some crops in certain years, where it has been shown that in order to maintain production in spite of the decrease in the area, productivity should be increased.

4- The big fluctuation noticed in the area of main crops in Jordan is explained to be due to the absence of the agricultural pattern. This pattern aims to identify areas of land cultivated with various crops and hence gain access to food security. In addition, there are other factors affecting these crops such as; insufficient irrigation water for the cultivated areas, agricultural pests and bad temperature.

5- The growth rate of the vegetables area is positive in the second period 2002-2007, and this provides a positive indication towards the promotion of food security in this period. Positive growth rates of vegetable crops reflect an increase in the cultivated areas and an improvement in the produced quantities, which is reflected positively on food security.

6- Variation in the numbers of fruit trees and production is common during the period 1997-2007, and this variation increases the difficulty of measuring food security achieved by the crops of fruit trees

7- The growth rate of the number of fruit trees was 0,025 for the period 1997-2001; while on the other hand it scored a negative growth rate that amounted to -0,004 for the period 2002-2007.

8- The growth rates of the total harvested area of field crops were negative for the period 2002-2007, as well as the growth rates of harvested area and production of crops, wheat, barley, lentils, chickpeas, except for the rates of production of chickpeas, which registered positively high rates.

9- There is a big gap in the achievement of food security from field crops in Jordan. The reason is the decline in production rates as it meets only a small part of the demand by the produced quantities.

10- The highest percentage of self-sufficiency of beef meat amounted to 16%. There is reliance on imports of beef to meet the demand from our society for this item. The high value of imports reflects the low level of food security of this specific item to meet the demand.

11- A good percentage of self-sufficiency of red meat was found; especially that from the goats, which amounted to 100% in the years 2002 and 2003 and 2004 to finally reach 98% in 2007. Food security of the goats is considered good, but the contrast on the number of goats in Jordan must be maintained in order to maintain a level of food security of this item.

12- The values of self-sufficiency of meat sheep were not stable during the period 2002-2007. The highest value was recorded in the year 2007 as it achieved more than 45% of food security; the lowest value recorded in the year 2004 fell below 30%. The shortage of meat sheep was covered by the import process, but the results showed a high value of local production of sheep meat in the years



2005, 2006 and 2007. There is a good possibility of improving the food security for this item and of reducing the amount of imports that achieves food security.

13- The percentage of self-sufficiency from vegetable crops tomato, cucumber, eggplant, and melons was more than 100%. Potato and onion achieved less than 100%.

14- The results of supply and demand forecasts for the period 2010-2025 showed that the demand will exceed supply for each of the products of tomatoes, potatoes, melons, eggplant and onions; except for the cucumber where the supply exceeds the demand. The demand also exceeds supply for the crops of grape and vice versa for the apple crop.

2007

(2007-1997)

2.4

1976

1993  
2000  
%11.0

2000  
%4.8

2004  
%66

2002  
%9.1

2004  
%1.1

1992  
120.9

2000  
246.9

2000  
%3.8

1992

157  
%.2.5

2007  
%4.5

2007

.2007

1997

$$\ln x = a + b t$$

:

:

:X

t

:b

:t

(t)

2001

1997

.2007

2002





•  
•





1.17 2007-1994

%30

2007 1.1 1994

.(1-1)

(50)

:(1-1)

( : ) 2007-1994

(%)				
52.20	482,404	526,762	1,009,166	1994
54.63	515,553	620,845	1,136,397	1995
49.94	495,768	494,517	990,285	1996
53.58	526,503	607,758	1,134,261	1997
55.25	530,014	654,446	1,184,460	1998
55.80	536,877	677,812	1,214,689	1999
54.98	539,460	658,808	1,198,268	2000
55.15	528,902	650,270	1,179,172	2001
55.07	550,689	675,024	1,225,712	2002
54.57	546,172	655,974	1,202,147	2003
55.60	545,404	683,943	1,229,347	2004
56.70	547,130	715,109	1,262,239	2005
57.90	540,504	745,962	1,286,466	2006
66.10	388,486	759,333	1,147,819	2007
<b>55.60</b>	<b>519,562</b>	<b>651,897</b>	<b>1,171,459</b>	

( : )

:

( ) . / /

/

.

1,872 2007 (2-1)

. ( ) 1,061 811

. %97

:(2-1)

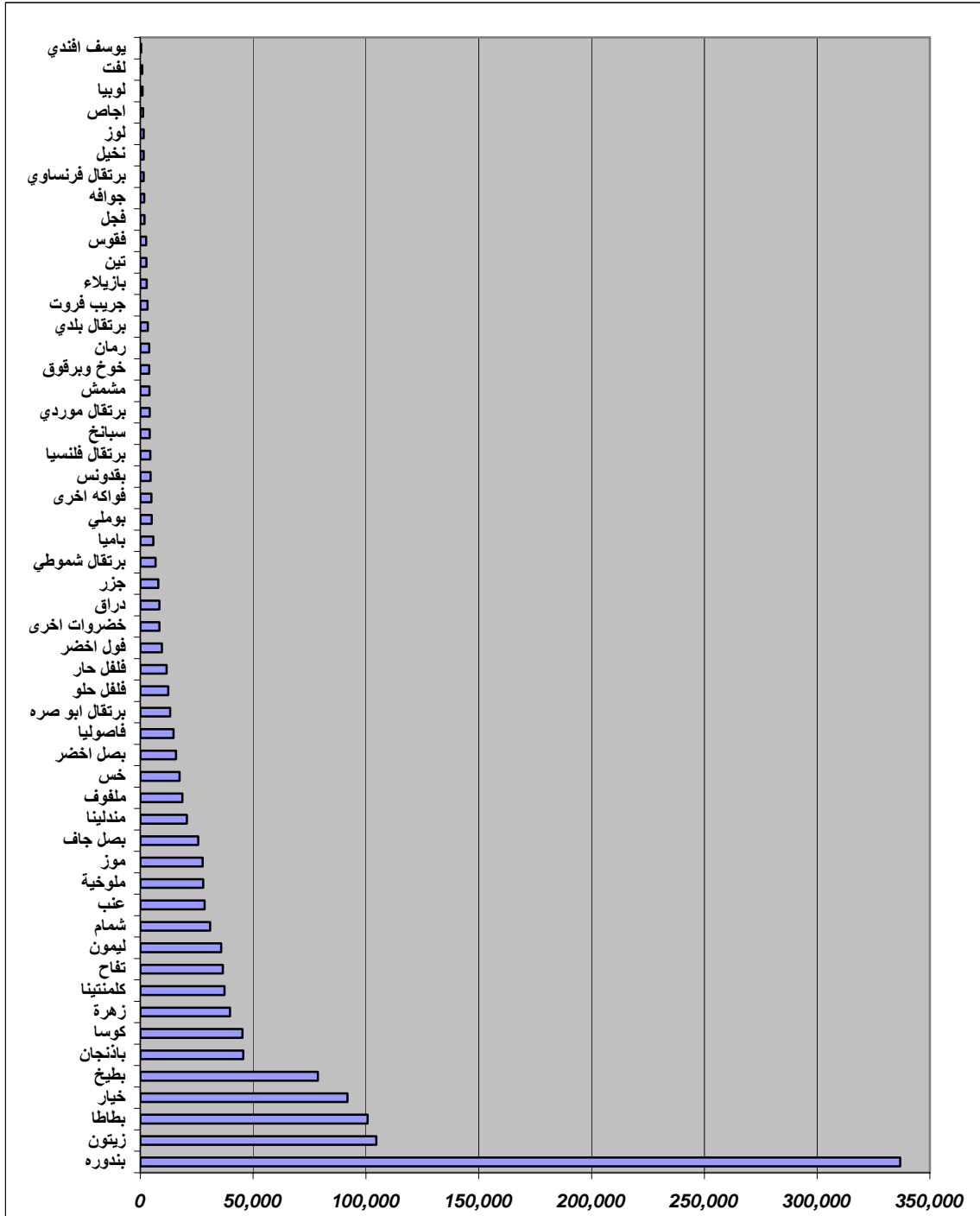
( : ) 2007

(%)				
53.3	379,789	433,265	813,054	
7.1	672,501	51,563	724,064	
97.4	8,697	326,068	334,765	
<b>43.3</b>	<b>1,060,987</b>	<b>810,896</b>	<b>1,871,883</b>	

( : )

(1-1)

(1-1)



2-1

1-2-1

(3-1)

2007-1997

.2007-2002

2001-1997

2007-1997

(3-1)

(% : : )

	8,330		8,352		17,043		40,184		23,314		81,919	1997
46.3	12,186	70.0	14,201	8.2	18,445	-0.2	40,087	-2.2	22,794	-10.0	73,694	1998
-11.9	7,337	47.8	12,343	-4.4	16,290	-7.4	37,199	35.8	31,666	-2.0	80,299	1999
33.1	11,086	68.5	14,073	-2.2	16,672	-8.6	36,731	-54.3	10,652	-0.9	81,152	2000
2.2	8,511	-28.8	5,943	14.7	19,549	-6.3	37,636	-32.9	15,653	3.8	85,057	2001
25.0	10,415	40.6	11,745	15.4	19,662	-12.8	35,021	-29.7	16,398	-6.5	76,562	2002
10.2	9,181	-69.1	2,578	-2.3	16,654	-5.5	37,970	10.5	25,769	10.2	90,248	2003
25.4	10,445	83.2	15,300	49.8	25,537	12.6	45,238	-44.8	12,864	10.1	90,229	2004
90.8	15,895	42.2	11,880	72.4	29,381	20.6	48,475	-40.3	13,918	37.2	112,380	2005
110.5	17,534	-13.2	7,246	53.2	26,103	31.3	52,780	-9.3	21,155	37.5	112,656	2006
75.9	14,651	49.5	12,485	72.4	29,384	-11.8	35,431	-24.5	17,598	28.7	105,403	2007

( : )

(4-1)

2001 1999 1998

(2-1)

(2-1)

.1998 1997

2007-1997

:(4-1)

(% : : )

	58,629		17,574		39,660		94,659		105,130		323,992	1997
52.9	89,646	22.1	21,462	33.3	52,864	-7.0	88,052	-14.5	89,844	-7.4	299,916	1998
13.1	66,313	57.3	27,641	10.1	43,670	1.8	96,338	14.8	120,666	-9.5	293,287	1999
126.7	132,918	168.9	47,263	-9.9	35,726	2.6	97,075	-66.7	35,011	9.4	354,292	2000
31.1	76,863	33.7	23,492	-7.5	36,672	7.1	101,344	-67.4	34,248	-4.3	310,195	2001
99.4	116,891	91.8	33,703	49.7	59,356	11.3	105,334	-31.7	71,777	11.1	359,832	2002
71.9	100,761	-49.7	8,834	29.2	51,228	29.3	122,396	-10.0	94,586	28.4	415,871	2003
71.3	100,427	181.3	49,436	109.1	82,947	74.7	165,332	-20.2	83,903	38.7	449,487	2004
183.5	166,220	125.3	39,598	150.2	99,244	81.8	172,077	-19.1	84,998	84.9	598,933	2005
143.4	142,690	63.4	28,722	141.1	95,614	69.1	160,028	-12.6	91,876	68.4	545,566	2006
157.3	150,868	62.6	28,571	147.4	98,138	4.4	98,866	-18.5	85,650	88.4	610,246	2007

( : )

2001

(2-1)

(2-1)

%54.3 2000  
2007 2001

1998

1999

%35.8

1999

1999 1998

(2-1)

2005

.2007

2000

2007

2006

2003 2000 1999

2007 2004

2007-1997

2006-2004

2003-1997

2007 2006

.2006

2007

1999

2007-1997

2007

2002

1997

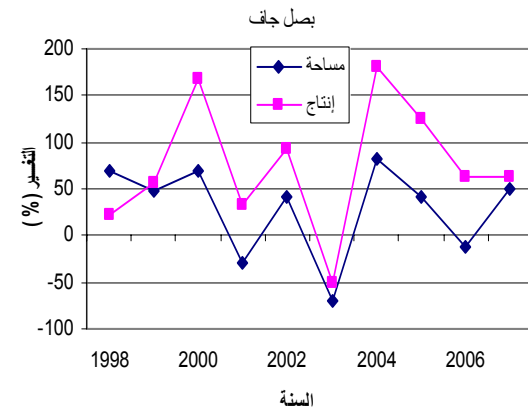
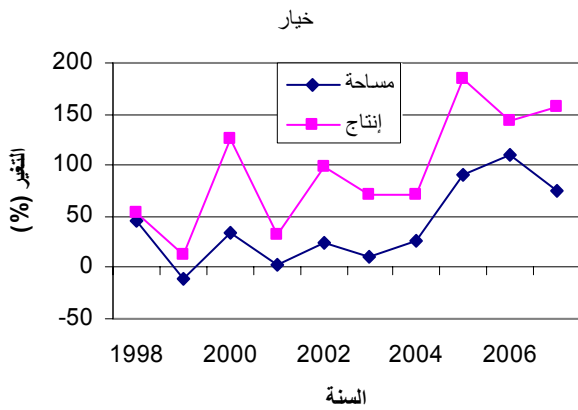
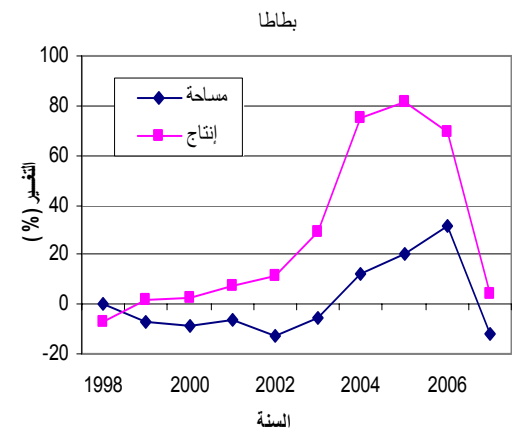
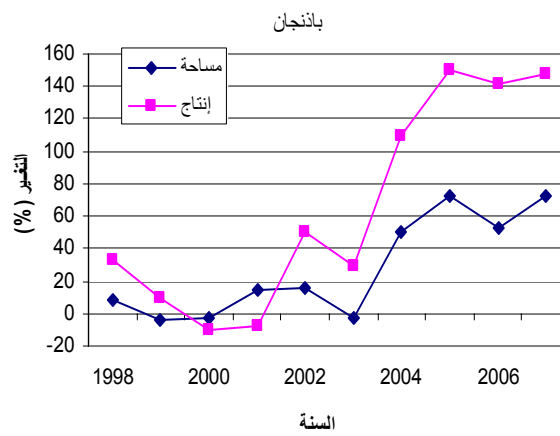
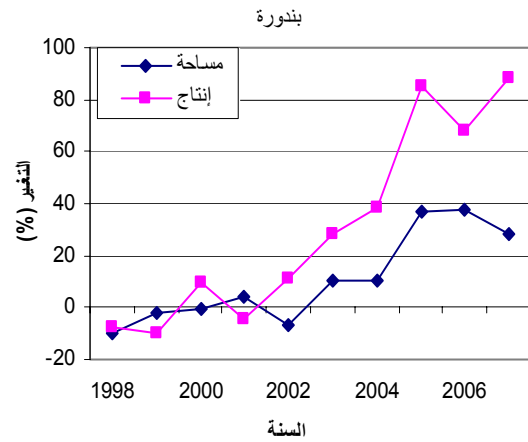
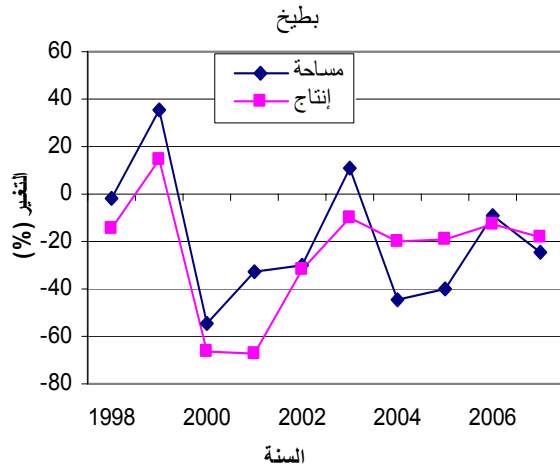
2007

2003



(2-1):

( : : )



(5-1)

2001-1997

2007-2002

0.017

0.009-

2001-1997

:(5-1)

2007-2002	2001-1997	
0.017	-0.001	
0.071	0.017	
0.036	-0.009	
-0.005	-0.156	
0.029	-0.163	
0.032	-0.022	
-0.016	0.044	
0.10	0.017	
0.029	-0.072	
0.090	-0.069	
-0.018	0.206	
0.116	-0.005	
-0.035	0.099	

( : )

2007-2002

)

0.036 0.071

(0.05 >

.2001-1997

2001-1997

0.163- 0.156-

2007-2002

.2007-2002

(5-1)

0.022-

2001-1997

0.044

0.032

2007-2002

0.016-

2007-2002 2001-1997

0.072-

2007-2002

0.029 0.10

.

2007-2002

2001-1997

0.069-

.

2007-2002

2001-1997

0.005-

0.099

.2001-1997

0.035-

0.116

2007-2002

.

**2-2-1**

(3-1)

2007-2000      %100

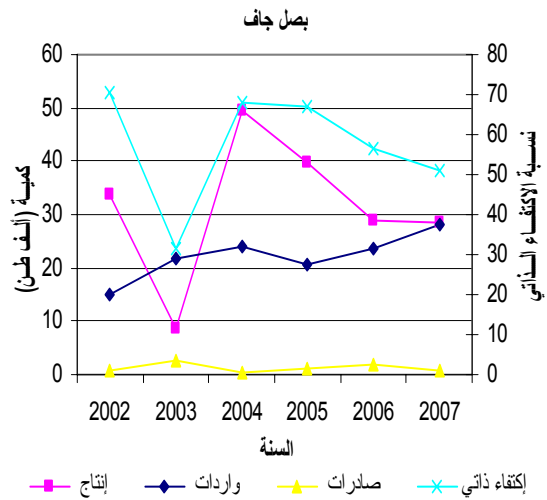
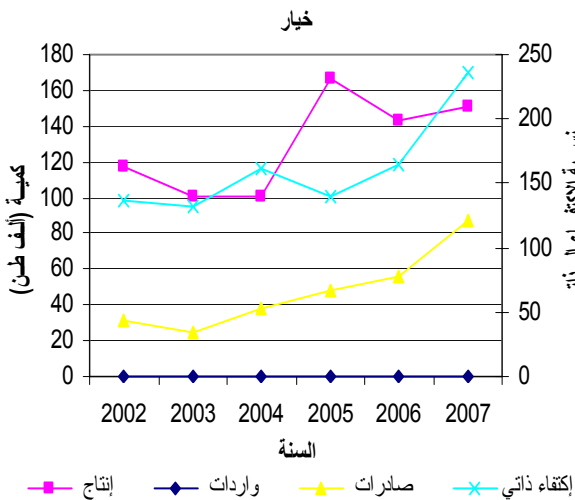
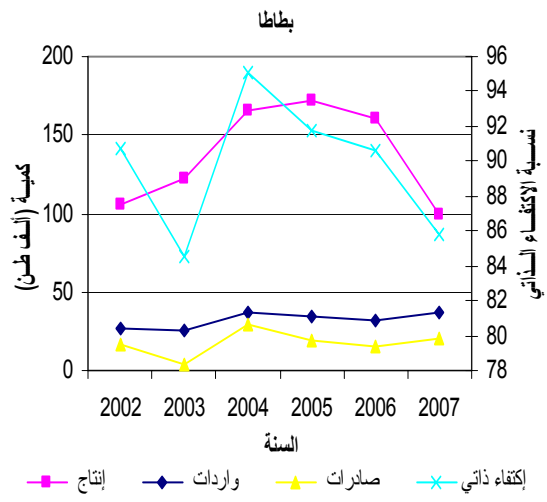
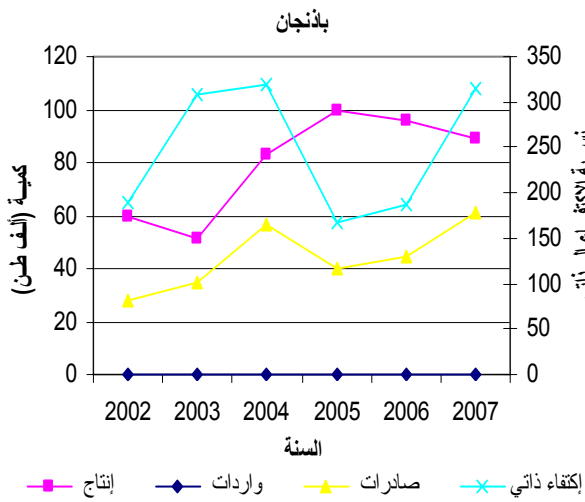
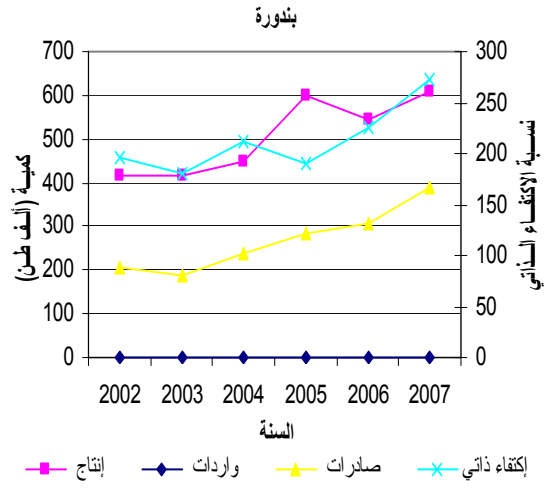
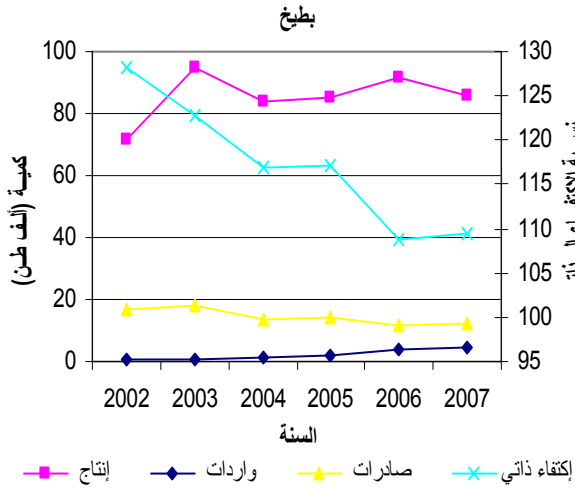
2007-2002

.2007-2002

2007-2002      %100

:(3-1)

2007-2002



2007-2002      %100  
 .2004      %95      2003      %84  
  
 .2007-2002  
 2007      %86  
 .  
 (3-1)  
 .  
 %100  
 (3-1)      2007-2002  
  
 .  
 -2002      %100      (3-1)  
 2007  
 .  
 %50  
 .2003 2002      %100      2007  
 .



3-2-1

(6-1)

2001-1997

0.309-

.2001-1997

(4-1)

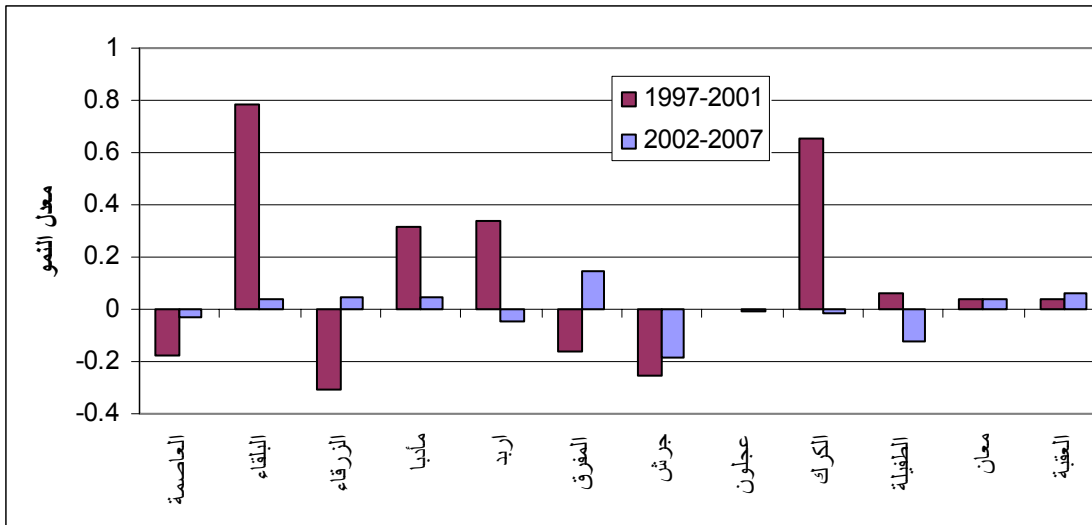
2007-2002

:(6-1)

2007-2002	2001-1997	
-0.032	-0.176	
0.039	0.782	
0.044	-0.309	
0.049	0.312	
-0.047	0.339	
0.145	-0.165	
-0.183	-0.255	
-0.006	-0.001	
-0.018	0.654	
-0.122	0.061	
0.039	0.035	
0.065	0.042	

( : )

:(4-1)



3-1

1-3-1

(7-1)

1998

2001 5,321,639 7,286,919

.2003 1,512,254 1,848,737 1999

1,537,744 2007

2002 2,589,974

1,502,942 2007

2,199,235 2002

1,787,548 2003

2007-1997

:(7-1)

(%)		(%)		(%)		(%)		
	1884446		1,824,365		1,643,489		5,580,385	1997
-0.3	1878239	19.8	2,185,818	2.4	1,682,432	30.6	7,286,919	1998
2.8	1930430	5.8	2,312,793	9.9	1,848,737	-12.4	6,383,077	1999
4.9	2024315	2.4	2,369,081	-2.3	1,805,594	0.0	6,383,892	2000
5.5	2135235	-18.9	1,921,552	-2.7	1,756,131	-16.6	5,321,639	2001
3.0	2199235	34.8	2,589,974	1.2	1,776,421	10.9	5,904,238	2002
-18.7	1787548	-11.3	2,297,265	-14.9	1,512,254	-9.7	5,331,779	2003
6.6	1905241	-6.1	2,157,713	5.5	1,595,690	27.4	6,793,321	2004
-0.3	1899109	0.0	2,157,738	2.1	1,629,091	-24.2	5,152,180	2005
2.0	1937661	-0.1	2,155,724	1.9	1,659,777	20.8	6,225,060	2006
-2.9	1881956	-30.3	1,502,942	-7.4	1,537,744	9.6	6,825,395	2007

( : )

(8-1)

2007-1997

( : ) 2007-1997

:(8-1)

%		%		%		%		
	168923		31,009.70		18,280.60		57,145.20	1997
-4.0	162227	24.2	38,526.70	-2.3	17,862.90	140.7	137,548.50	1998
-47.2	85644	-19.4	31,035.20	2.0	18,224.20	-72.1	38,312.70	1999
45.5	124595	20.7	37,468.30	31.2	23,909.60	250.5	134,285.40	2000
9.7	136624	-0.9	37,133.70	142.6	58,008.50	-51.1	65,701.20	2001
-9.1	124207	5.6	39,229.70	-40.1	34,773.30	175.3	180,900.40	2002
18.5	147153	6.4	41,754.20	-19.3	28,071.90	-34.8	117,958.40	2003
-13.2	127774	1.6	42,424.30	15.4	32,407.80	36.3	160,738.30	2004
6.7	136282	7.4	45,562.70	6.3	34,452.40	-29.7	113,069.70	2005
2.2	139242	1.8	46,381.00	-6.6	32,183.90	29.9	146,828.90	2006
-35.1	90414	-32.0	31,523.00	-14.2	27,604.00	-14.8	125,029.00	2007

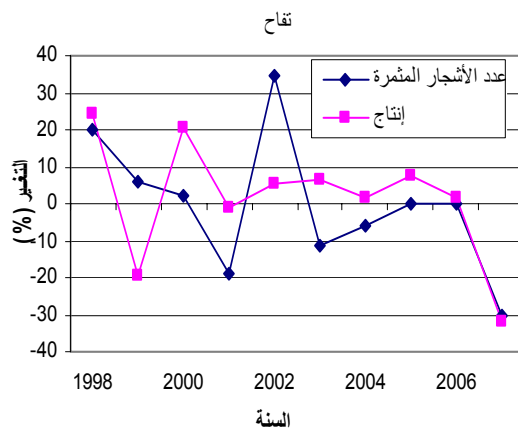
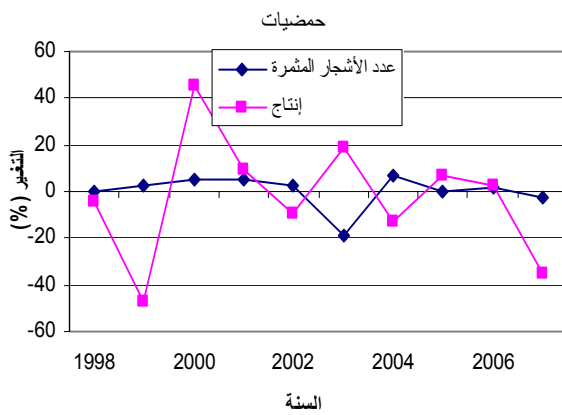
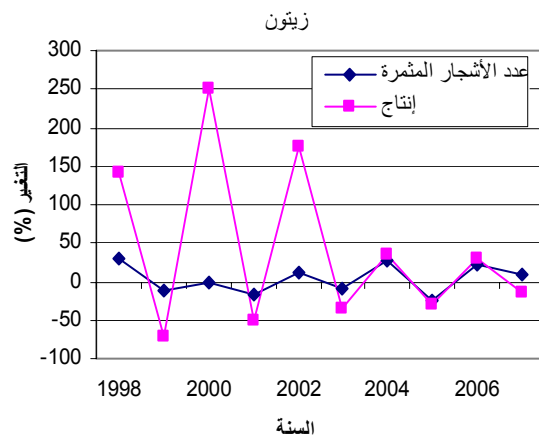
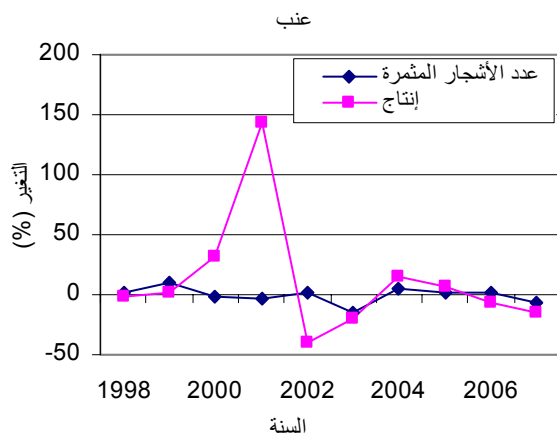
( : )

(5-1)

.2007-1997

:(5-1)

2007-1997



2002 2001

(5-1)

2007-1998

(5-1)

.2007 2006

1999 1998

2007-1998

2001-1997

(9-1)

0.025

2007-2002

.(-0.004)

2007-2002

2001-1997

2001-1997

2007-2002

2007-2002

0.044-

2007-2002

2001-1997

:(9-1)

2007-2002	2001-1997	
-0.004	0.025	
0.026	-0.023	
-0.044	0.026	
-0.012	0.020	
-0.02	0.260	
-0.083	0.018	
-0.020	0.033	
0.016	-0.009	
-0.047	-0.037	

( : )

2-3-1

(6-1)

%100

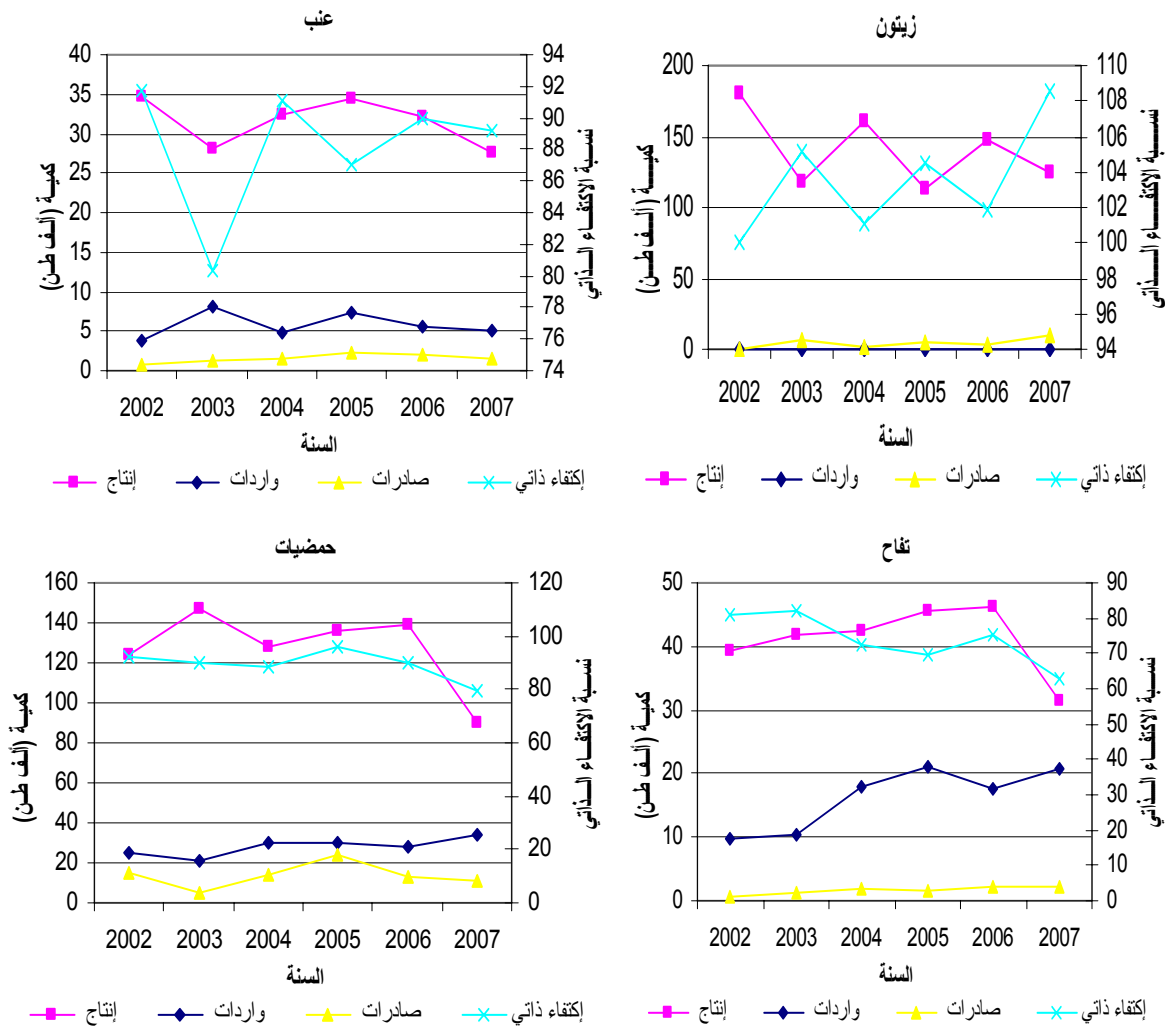
%100

(6-1)

%100

:(6-1)

2007-2002





2007-2002

(10-1)

.2001-1997

.(6-1)

(7-1)

2007-2002

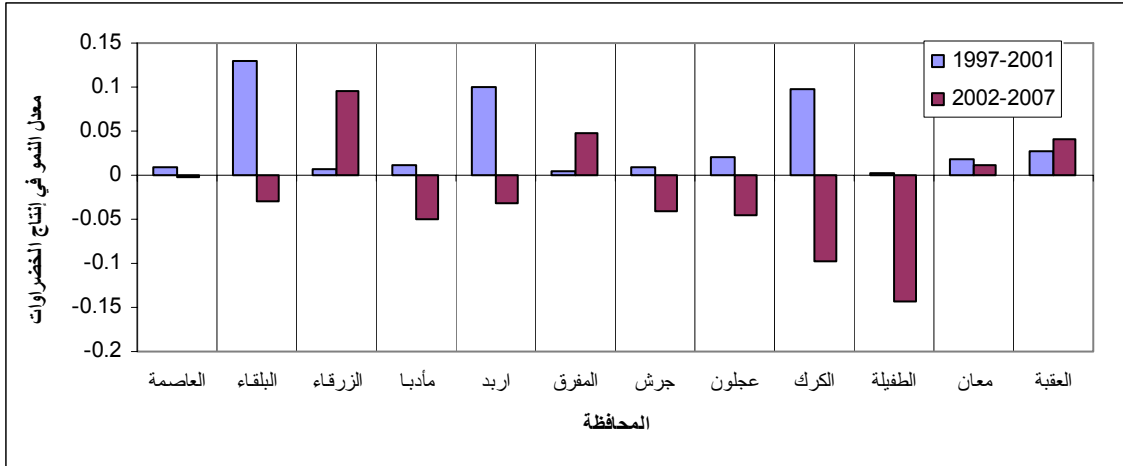
2007-2002

:(10-1)

2007-2002	2001-1997	
-0.002	0.010	
-0.029	0.130	
0.096	0.007	
-0.049	0.011	
-0.032	0.101	
0.047	0.004	
-0.041	0.010	
-0.045	0.020	
-0.098	0.097	
-0.143	0.003	
0.012	0.018	
0.040	0.027	

( : )

(7-1):



4-1

1-4-1

(11-1)

Year	Value
2002	327,454
1999	40,876
1999	36,817
1997	30,813
1997	917,937
1999	2,617

2007-1997

:(11-1)

( : )

%		%		%		%		
	19,969		30,813		917,937		568,852	1997
-55.5	8,888	-5.8	29,023	-63.6	334,344	-49.3	288,348	1998
-50.1	4,431	-85.8	4,113	-89.0	36,817	-85.8	40,876	1999
169.8	11,955	159.3	10,663	263.4	133,798	345.3	182,037	2000
-72.6	3,274	46.8	15,653	51.5	202,675	-26.1	134,495	2001
404.0	16,501	-23.9	11,907	173.2	553,767	143.5	327,454	2002
0.5	16,582	-40.0	7,140	-53.2	259,191	-9.1	297,813	2003
-61.4	6,402	107.7	14,829	11.9	290,057	-64.0	107,280	2004
119.0	14,022	-14.1	12,744	24.6	361,543	173.0	292,922	2005
-12.7	12,235	-61.4	4,919	-0.4	360,275	-8.1	269,208	2006
-43.1	6,963	-46.8	2,617	-19.1	291,428	-22.9	207,635	2007

( : )

1997

19,969

. 3,274

2001

(12-1)

43,771

1999

9,251

2002

56,772

2002

2,061

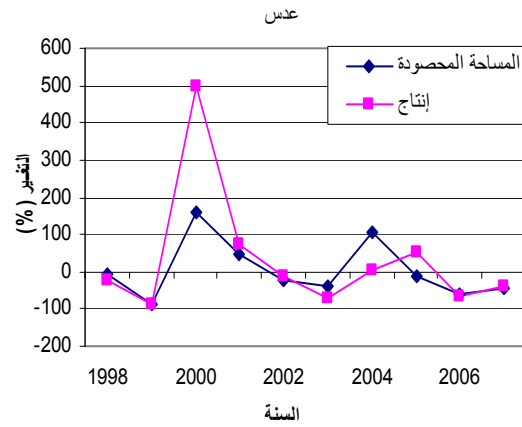
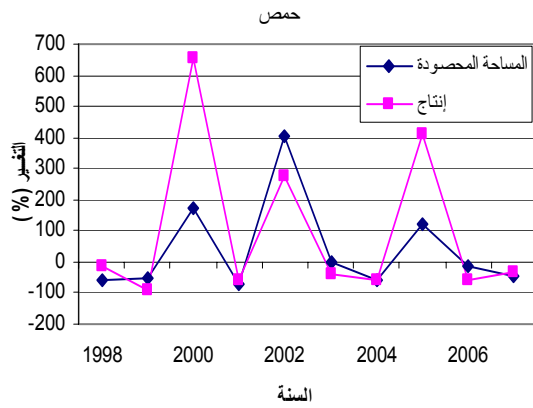
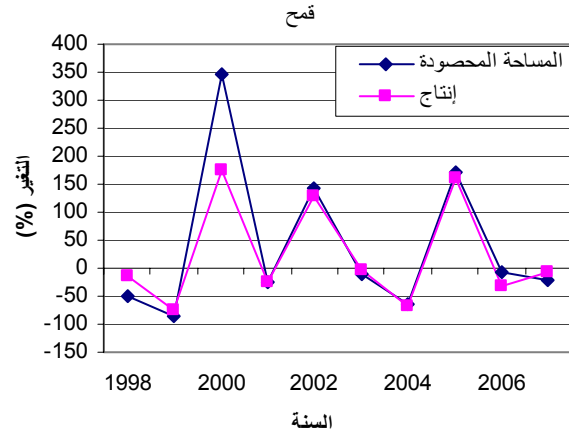
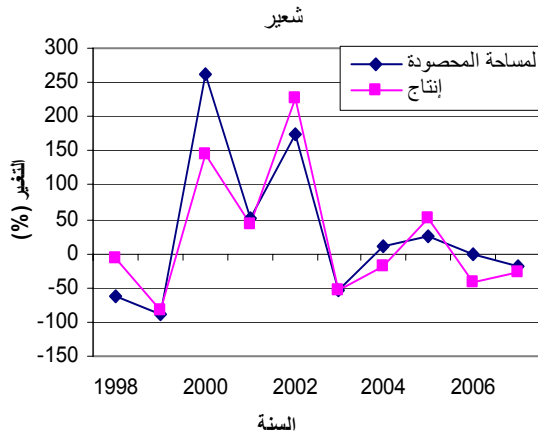
1999

4,940



(8-1):

2007-1997



(13-1)

2007-2002

2001-1997

2001-1997

2007-2002

:(13-1)

2007-2002	2001-1997	
-0.055	-0.128	
-0.045	-0.253	
-0.075	0.064	
-0.057	-0.235	
-0.151	0.062	
-0.253	-0.236	
-0.096	0.177	
-0.127	-0.332	
0.022	-0.007	

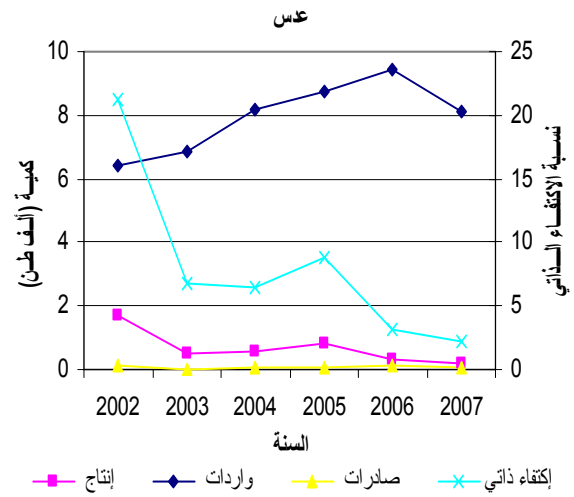
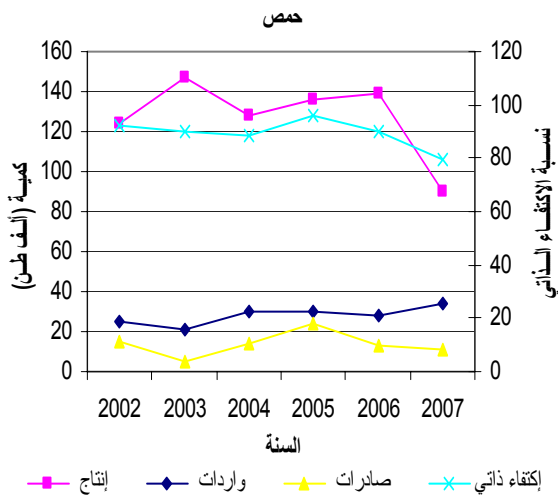
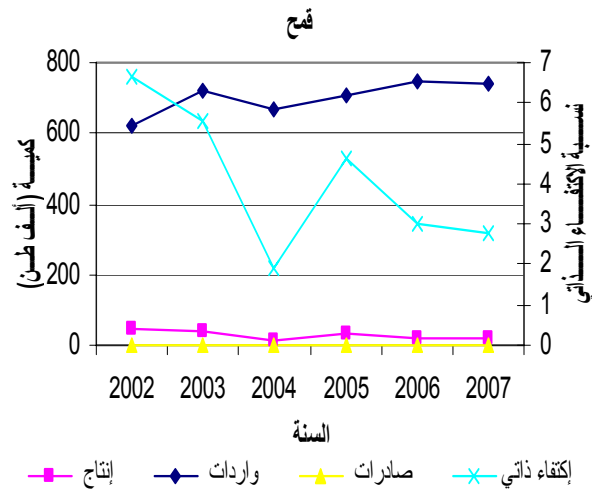
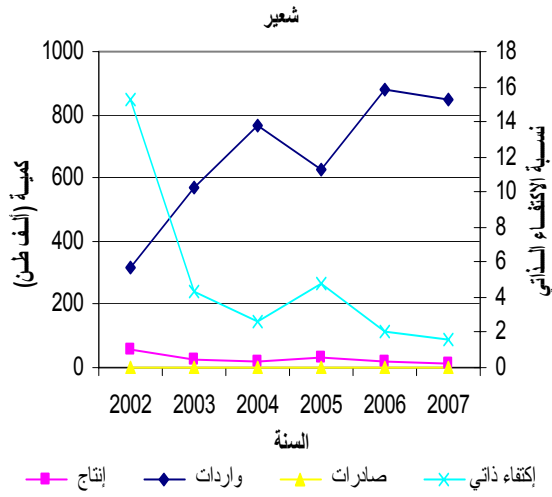
( : )

2-4-1

(9-1)

: (9-1)

2007-2002



-1997

(10-1)

(14-1)

2007-2002 2001

2001-1997

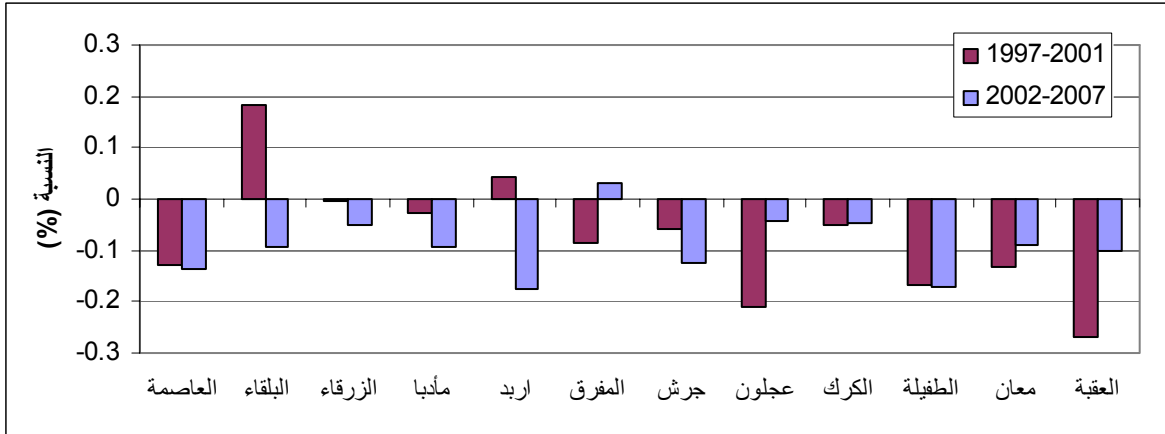
:(14-1)

2007-2002	2001-1997	
-0.135	-0.130	
-0.094	0.182	
-0.049	-0.002	
-0.093	-0.029	
-0.177	0.041	
0.032	-0.086	
-0.125	-0.059	
-0.043	-0.209	
-0.048	-0.050	
-0.170	-0.167	
-0.09	-0.132	
-0.101	-0.268	

( : )



(10-1):



5-1

(15-1)

2007-1997

2007-1997

/ 1.95

1997

/ 9.27

(11-1)

.1999

/ 11.14

(11-1)

.1999

/ 1.04

2002

.2007-1997

/ 0.14

2004

0.03

2007

:(15-1)

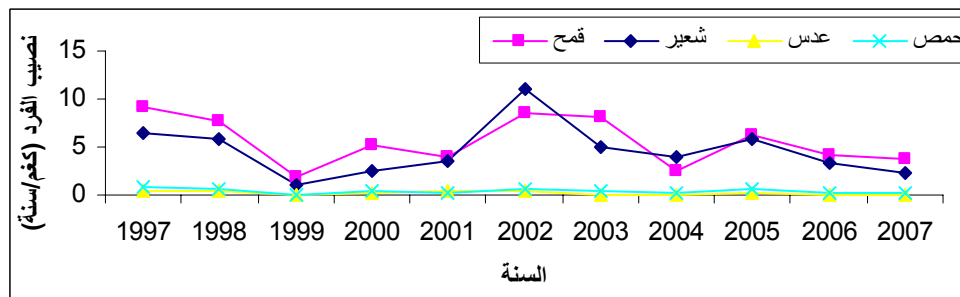
( / ) 2007-1997

2007	2006	2005	2004	2003	2002	2001	2000	1999	1998	1997	
3.67	4.09	6.28	2.46	8.13	8.59	3.88	5.24	1.95	7.78	9.27	
2.36	3.29	5.81	3.92	4.94	11.14	3.48	2.49	1.04	5.93	6.53	
0.03	0.05	0.15	0.10	0.10	0.33	0.38	0.23	0.04	0.34	0.46	
0.21	0.31	0.71	0.14	0.37	0.60	0.16	0.41	0.06	0.67	0.79	
106.63	97.42	109.43	84.02	79.52	70.58	62.31	72.94	61.90	64.87	71.90	
14.97	16.41	15.53	15.68	18.09	14.08	6.88	7.21	25.47	19.43	23.33	
17.28	28.58	31.44	30.90	23.40	20.66	20.36	19.99	20.33	19.05	21.01	
17.15	17.07	18.13	15.50	9.80	11.64	7.37	7.36	9.22	11.43	8.80	
4.99	5.13	7.24	9.24	1.69	6.61	4.72	9.73	5.83	4.64	3.90	
26.36	25.48	30.37	18.77	19.27	22.93	15.44	27.37	14.00	19.39	13.01	
21.85	26.22	20.66	30.04	22.55	35.48	13.20	27.65	8.09	29.75	12.68	
4.82	5.75	6.29	6.06	5.37	6.82	11.65	4.92	3.85	3.86	4.06	
5.51	8.28	8.32	7.93	7.98	7.70	7.46	7.71	6.55	8.33	6.88	
15.80	24.86	24.90	23.88	28.14	24.36	27.45	25.65	18.08	35.09	37.49	

( : )

:(11-1)

( / ) 2007-1997



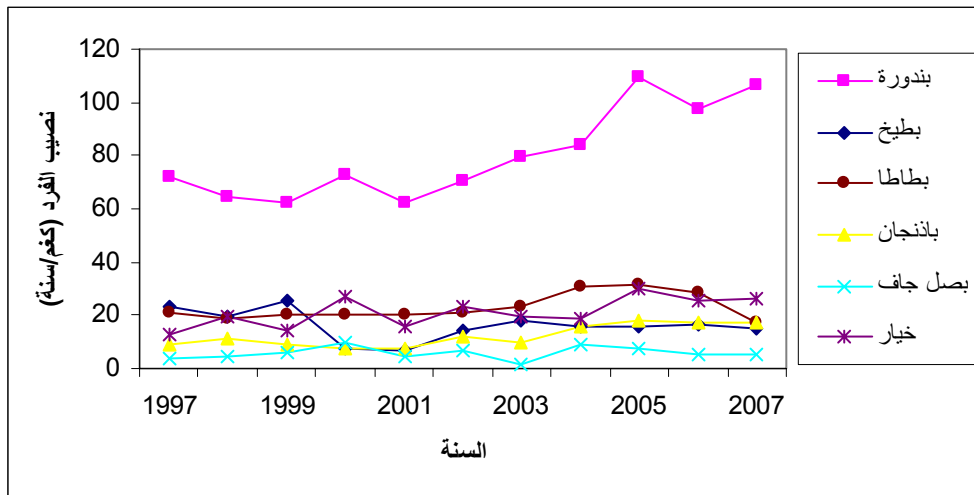
(12-1)

2005 / 109.43 (15-1).

(12-1).

(12-1):

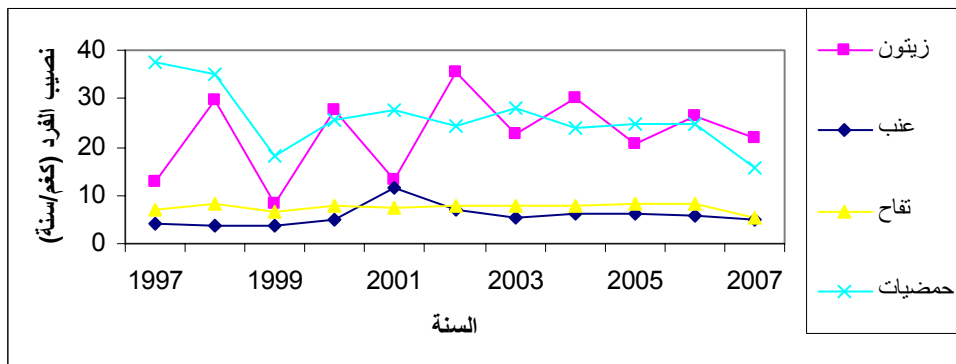
( / ) 2007-1997



(13-1)

(13-1):

( / ) 2007-1997



6-1

(2) (1) 2025-2010

(14-1)

(14-1)

2025 2024

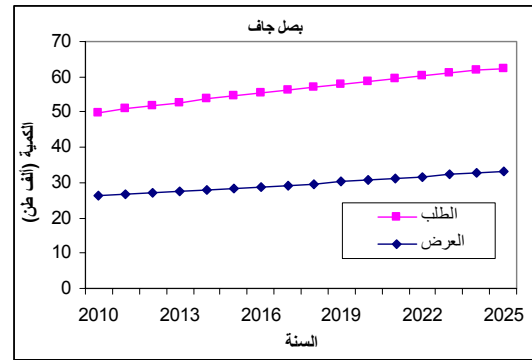
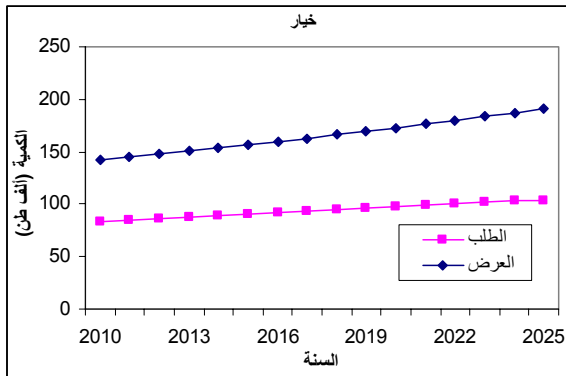
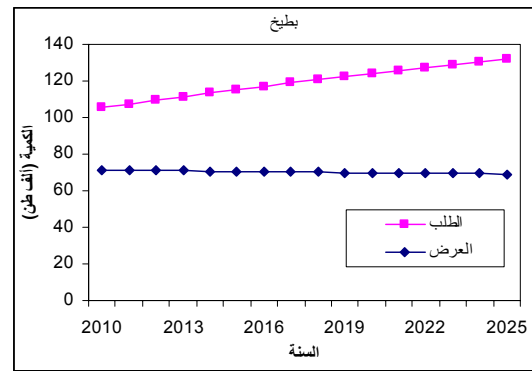
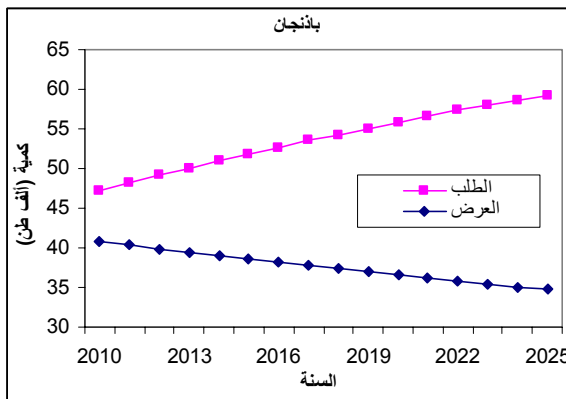
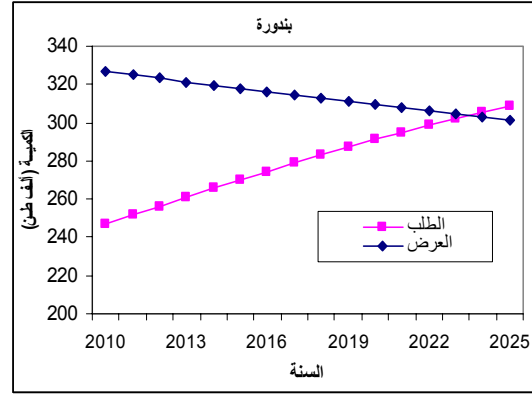
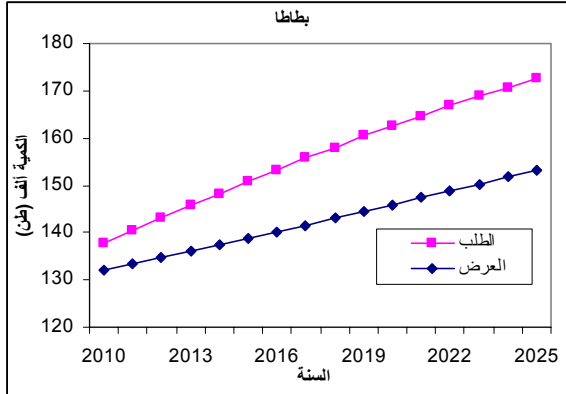
2023

2025-2010

.2025-2010

2025-2010

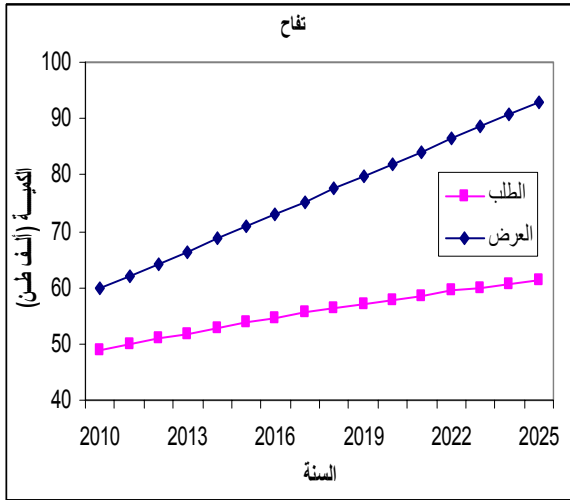
:(14-1)



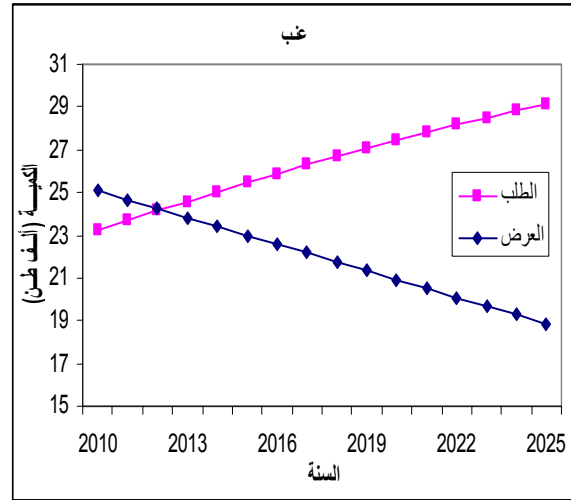
(15-1)

.2025-2010

2025-2010



:(15-1)





•  
•





.	
:	
.	.1
.	.2
.	.3
.	.4
.	.5
.	.6
.	.7

:

:

:

.

.1

.2

:

:

.1

.2

.(

)

.3

**2-2**

2007-1997

(1-2)

2007

2003

%27.66

.2007

(1-2)

%.2.66

2007-1997

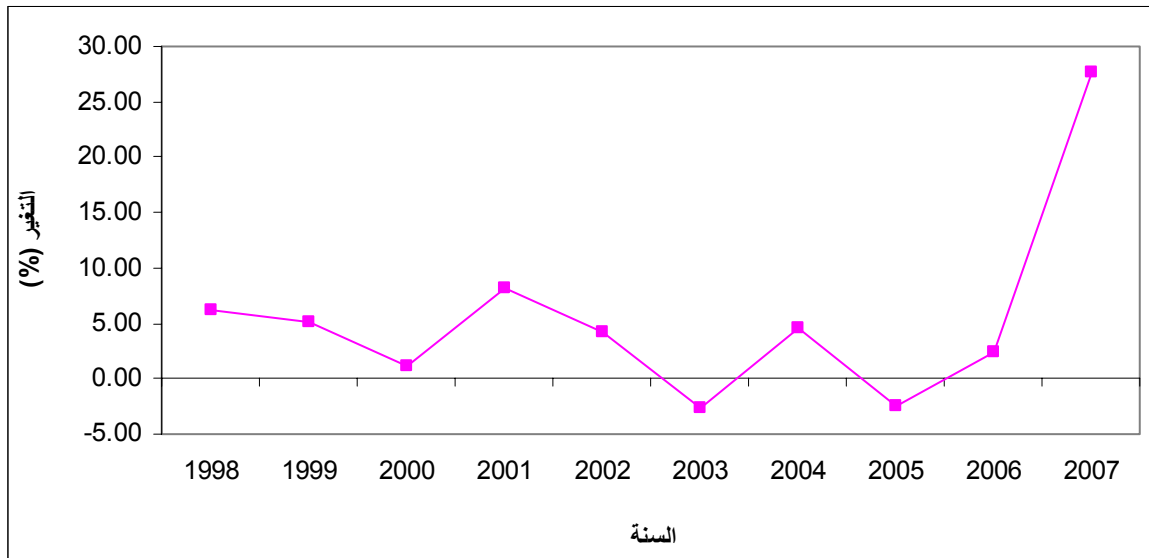
:(1-2)

(%)		
	53,501	1997
6.20	56,820	1998
5.16	59,753	1999
1.12	60,421	2000
8.19	65,370	2001
4.13	66,260	2002
-2.66	66,260	2003
4.56	69,280	2004
-2.54	67,520	2005
2.34	69,100	2006
27.66	88,215	2007

( : )

2007-1997

:(1-2)



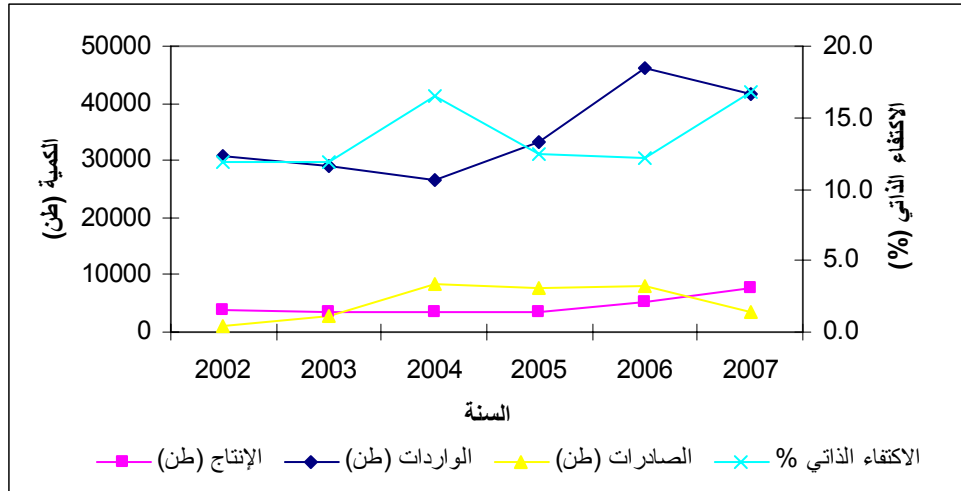
2007-2002

(2-2)

2007 %17

: (2-2)

2007-2002



3-2

(2-2)

2003	457,490	2001	920,425
			121,570
	559,600	2007	
			.1997

(3-2)

.2001	2000	2000-1997	
2006		2007	2002

2007-1997

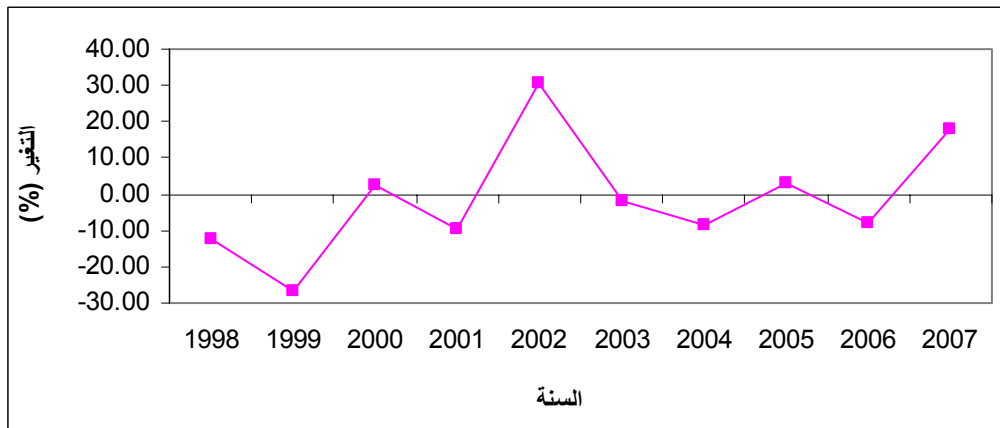
:(2-2)

(%)		
	721,408	1997
-12.48	631,408	1998
-26.93	461,393	1999
2.40	472,459	2000
-9.85	425,920	2001
30.84	557,260	2002
-1.75	547,490	2003
17.66	501,120	2004
3.00	516,140	2005
-8.20	473,810	2006
18.11	559,600	2007

( : )

2007-1997

:(3-2)



(4-2)

%98

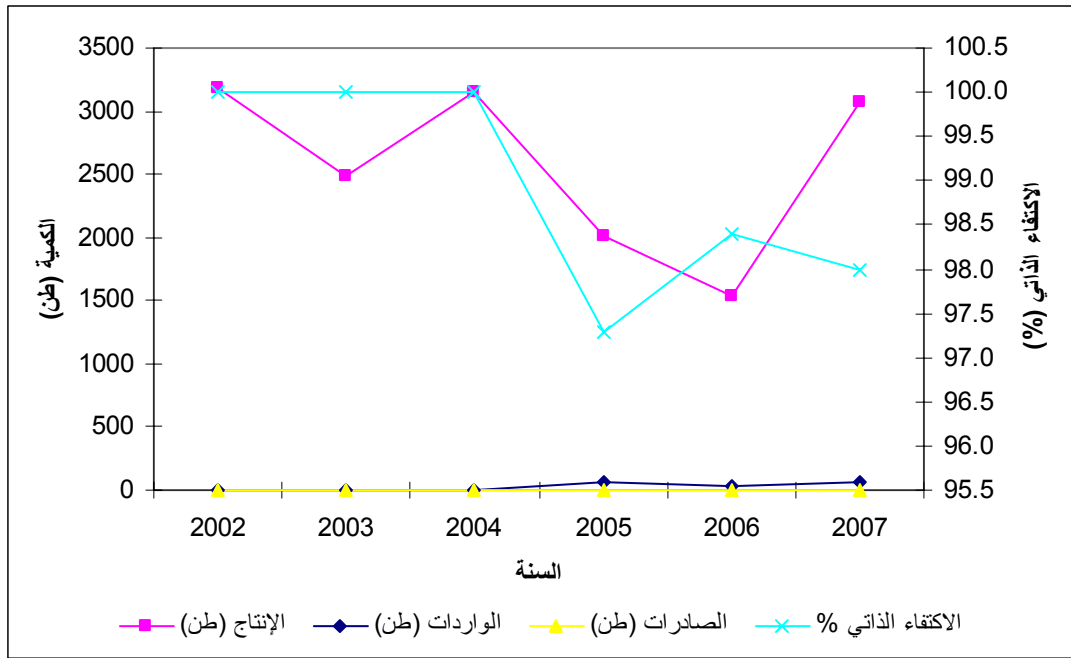
2004 2003 2002

%100

.2007

:(4-2)

2007-2002



4-2

2007-1997

(3-2)

1997

2,112,261

2,496,227

2007

.2007-1997

(5-2)

2002-1999

.2007

2007-1997

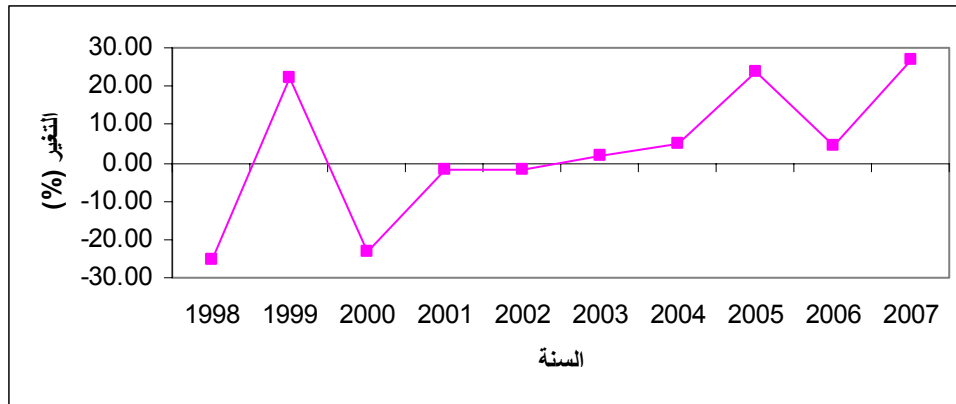
:(3-2)

(%)		
	2,112,261	1997
-12.48	1,581,131	1998
-26.93	1,933,986	1999
2.40	1,484,084	2000
-9.85	1,457,910	2001
0.00	1,433,310	2002
0.00	1,457,910	2003
17.66	1,529,090	2004
3.00	1,890,440	2005
-8.20	1,971,520	2006
18.11	2,496,227	2007

( : )

2007-1997

:(5-2)



.2007-2002

(6-2)

2004

%45

2007

.%30

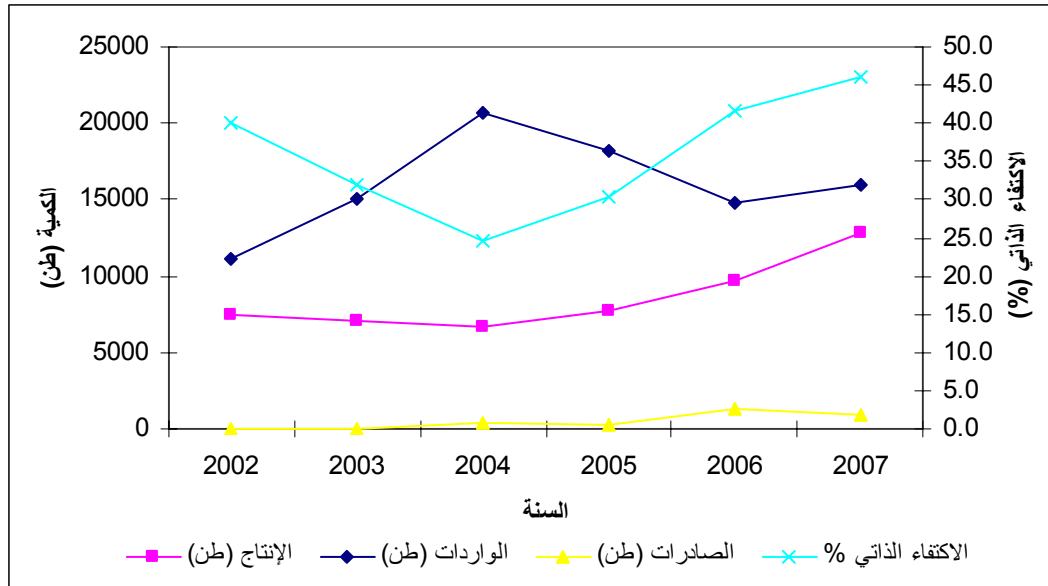
2005

2007 2006



:(6-2)

2007-2002



2007-1997

2001-1997

.2007-2002

.1

.2

			.3
			.4
2007-2002			.5
			.6
		2007-1997	
2001-1997	0.025		.7
	.0.004-	2007-2002	
	2007-2002		.8
			.9
		%17	.10

%100 .11

2007 %98 2004 2003 2002

2007-2002 .12

2004 %45 2007

.%30

2007 2006 2005

%100 .13

%100

2025-2010 .14







(2025-2010)

(1)

2014	2013	2012	2011	2010		
56,979	55,984	54,988	53,993	52,915		1
23,131	22,727	22,323	21,919	21,481		2
25,978	25,524	25,070	24,617	24,125		3
23,030	22,627	22,225	21,823	21,387		4
2,799	2,750	2,701	2,652	2,599		5
3,813	3,746	3,680	3,613	3,541		6
35,469	34,850	34,230	33,611	32,939		7
52,757	51,835	50,914	49,992	48,994		8
25,026	24,589	24,152	23,714	23,241		9
113,323	111,344	109,364	107,385	105,240		10
15,689	15,415	15,141	14,867	14,570		11
6,012	5,907	5,802	5,697	5,584		12
1,797	1,765	1,734	1,703	1,669		13
7,902	7,764	7,626	7,488	7,339		14
2,540	2,496	2,451	2,407	2,359		15
3,564	3,502	3,439	3,377	3,310		16
7,785	7,649	7,513	7,377	7,230		17
5,206	5,115	5,024	4,933	4,834	-	18
4,591	4,511	4,431	4,351	4,264		19
265,564	260,925	256,286	251,648	246,623		20
148,309	145,719	143,128	140,538	137,731		21
53,665	52,728	51,790	50,853	49,837		22
2,915	2,865	2,814	2,763	2,708		23
3,710	3,645	3,580	3,515	3,445		24
50,926	50,036	49,147	48,257	47,293		25
50,879	49,990	49,101	48,213	47,250		26
11,227	11,031	10,835	10,638	10,426		27
8,412	8,265	8,118	7,971	7,812		28
9,428	9,263	9,098	8,933	8,755		29
55,797	54,822	53,848	52,873	51,817		30
9,432	9,267	9,103	8,938	8,759		31
12,725	12,503	12,281	12,059	11,818		32
40,745	40,034	39,322	38,610	37,839		33
27,720	27,236	26,752	26,267	25,743		34
1,331	1,308	1,284	1,261	1,236		35
3,227	3,171	3,115	3,058	2,997		36
89,426	87,864	86,302	84,740	83,048		37
1,419	1,395	1,370	1,345	1,318		38
8,251	8,107	7,963	7,819	7,662		39



(2025-2010)

(1) /

2019	2018	2017	2016	2015		
61,623	60,711	59,882	58,886	57,974	برتقال	1
25,016	24,646	24,309	23,905	23,535	مندالينا	2
28,096	27,680	27,301	26,848	26,432	كلمنتينا	3
24,907	24,538	24,203	23,801	23,432	ليمون	4
3,027	2,982	2,941	2,893	2,848	جريب فروت	5
4,124	4,063	4,007	3,941	3,879	بوملي	6
38,361	37,793	37,276	36,657	36,089	موز	7
57,057	56,213	55,445	54,523	53,678	تفاح	8
27,066	26,665	26,301	25,864	25,463	عنب	9
122,560	120,746	119,096	117,117	115,302	بطيخ	10
16,968	16,716	16,488	16,214	15,963	شمام	11
6,503	6,406	6,319	6,214	6,117	مشمش	12
1,943	1,914	1,888	1,857	1,828	أجاص	13
8,547	8,420	8,305	8,167	8,040	دراق	14
2,747	2,707	2,670	2,625	2,585	جوافة	15
3,854	3,797	3,745	3,683	3,626	رمان	16
8,420	8,295	8,182	8,046	7,921	تين	17
5,630	5,547	5,471	5,380	5,297	تمر-بلح	18
4,966	4,892	4,825	4,745	4,671	برقوق خوخ	19
287,211	282,959	279,093	274,455	270,202	بندورة	20
160,398	158,024	155,865	153,274	150,900	بطاطا	21
58,039	57,180	56,399	55,462	54,602	بصل ناشف	22
3,153	3,106	3,064	3,013	2,966	بصل اخضر	23
4,012	3,953	3,899	3,834	3,775	ثوم ناشف	24
55,077	54,261	53,520	52,631	51,815	بادنجان	25
55,026	54,212	53,471	52,582	51,768	كوسا	26
12,142	11,962	11,799	11,603	11,423	فاصولياء خضراء	27
9,098	8,963	8,841	8,694	8,559	باميا خضراء	28
10,196	10,045	9,908	9,743	9,592	فول اخضر	29
60,345	59,452	58,639	57,665	56,771	ملوخية	30
10,201	10,050	9,913	9,748	9,597	فلفل اخضر	31
13,763	13,559	13,374	13,151	12,948	سبانخ	32
44,067	43,414	42,821	42,110	41,457	زهرة	33
29,980	29,536	29,132	28,648	28,204	ملفوف	34
1,439	1,418	1,399	1,376	1,354	لوبيا	35
3,490	3,439	3,392	3,335	3,284	بازيلا	36
96,715	95,283	93,982	92,420	90,988	خيار	37
1,535	1,512	1,492	1,467	1,444	لفت	38
8,923	8,791	8,671	8,527	8,395	خس	39

(2025-2010)

(1) /

2024	2023	2022	2021	2020		
65,604	64,858	64,111	63,282	62,453	برتقال	1
26,633	26,330	26,027	25,690	25,353	مندليينا	2
29,911	29,570	29,230	28,852	28,474	كلمنتينا	3
26,516	26,214	25,913	25,577	25,242	ليمون	4
3,223	3,186	3,149	3,108	3,068	جريب فروت	5
4,390	4,340	4,290	4,235	4,179	بوملي	6
40,839	40,374	39,909	39,393	38,877	موز	7
60,743	60,052	59,361	58,593	57,825	تفاح	8
28,814	28,486	28,159	27,794	27,430	عنب	9
130,478	128,994	127,509	125,859	124,210	بطيخ	10
18,064	17,858	17,653	17,424	17,196	شمام	11
6,923	6,844	6,765	6,678	6,590	مشمش	12
2,069	2,045	2,022	1,996	1,969	أجاص	13
9,099	8,995	8,892	8,777	8,662	دراق	14
2,925	2,891	2,858	2,821	2,784	جوافة	15
4,103	4,057	4,010	3,958	3,906	رمان	16
8,964	8,862	8,760	8,647	8,533	تين	17
5,994	5,926	5,857	5,782	5,706	تمر-يلح	18
5,286	5,226	5,166	5,099	5,032	برقوق خوخ	19
305,766	302,287	298,808	294,942	291,076	بندورة	20
170,761	168,818	166,875	164,716	162,557	بطاطا	21
61,789	61,086	60,383	59,602	58,820	بصل ناشف	22
3,357	3,319	3,280	3,238	3,196	بصل اخضر	23
4,271	4,223	4,174	4,120	4,066	ثوم ناشف	24
58,635	57,968	57,301	56,559	55,818	بادنجان	25
58,581	57,915	57,248	56,507	55,767	كوسا	26
12,926	12,779	12,632	12,469	12,305	فاصولياء خضراء	27
9,685	9,575	9,465	9,343	9,220	باميا خضراء	28
10,855	10,731	10,608	10,470	10,333	فول اخضر	29
64,243	63,513	62,782	61,969	61,157	ملوخية	30
10,860	10,736	10,613	10,476	10,338	فلفل اخضر	31
14,652	14,485	14,318	14,133	13,948	سبانخ	32
46,914	46,380	45,846	45,253	44,660	زهرة	33
31,916	31,553	31,190	30,787	30,383	ملفوف	34
1,532	1,515	1,498	1,478	1,459	لوبيا	35
3,716	3,674	3,631	3,584	3,537	بازيلا	36
102,963	101,792	100,620	99,319	98,017	خيار	37
1,634	1,616	1,597	1,576	1,556	لفت	38
9,500	9,392	9,284	9,164	9,044	خس	39

(2025-2010)

(1)

/

2025		
66,268	برتقال	1
26,902	مندالينا	2
30,213	كلمنتينا	3
26,784	ليمون	4
3,255	جريب فروت	5
4,434	بوملي	6
41,252	موز	7
61,358	تفاح	8
29,106	عنب	9
131,798	بطيخ	10
18,246	شمام	11
6,993	مشمش	12
2,090	أجاص	13
9,191	دراق	14
2,954	جوافة	15
4,145	رمان	16
9,055	تين	17
6,054	تمر-بلح	18
5,340	برقوق خوخ	19
308,858	بنذورة	20
172,488	بطاطا	21
62,414	بصل ناشف	22
3,391	بصل اخضر	23
4,315	ثوم ناشف	24
59,228	بازنجان	25
59,174	كوسا	26
13,057	فاصولياء خضراء	27
9,783	باميا خضراء	28
10,964	فول اخضر	29
64,893	ملوخية	30
10,970	فلقل اخضر	31
14,800	سبانخ	32
47,388	زهرة	33
32,239	ملفوف	34
1,548	لوبيا	35
3,753	بازيلا	36
104,005	خيار	37
1,651	لفت	38
9,596	خس	39

(2025-2010)

(2)

2014	2013	2012	2011	2010		
319,605	321,361	323,130	324,906	326,691	بنورة	1
63,865	63,359	62,856	62,357	61,862	كوسا	2
39,056	39,475	39,900	40,328	40,761	باندجان	3
153,394	150,386	147,437	144,546	141,712	خيار	4
137,448	136,087	134,740	133,406	132,085	بطاطا	5
20,048	19,808	19,571	19,336	19,104	ملفوف	6
50,869	50,515	50,164	49,816	49,469	زهرة	7
42,348	40,490	38,714	37,015	35,391	فلفل أخضر	9
16,415	16,317	16,220	16,123	16,027	فول أخضر	10
30,922	29,131	27,445	25,856	24,359	فاصوليا	11
7,988	7,870	7,754	7,639	7,526	بازيلا	12
2,343	2,215	2,094	1,980	1,872	لوبيا	13
50,053	49,314	48,585	47,867	47,160	ملوخية	14
11,011	10,881	10,752	10,624	10,498	بامية	15
47,485	46,554	45,641	44,746	43,869	خس	16
37,455	37,269	37,084	36,899	36,716	شمام	17
70,765	70,920	71,076	71,232	71,388	بطيخ	18
6,573	6,351	6,137	5,930	5,730	سبانخ	19
27,860	27,417	26,982	26,553	26,131	بصل جاف	21
26,574	27,235	27,896	28,556	29,217	الليمون	30
38,045	37,364	36,683	36,003	35,322	موز	31
32,121	32,291	32,462	32,632	32,802	البرتقال	36
35,884	35,847	35,810	35,773	35,736	الكلمنتينا	37
19,217	19,247	19,277	19,308	19,338	المندلينا	38
2,889	2,908	2,928	2,948	2,968	جريب فروت	39
4,541	4,571	4,601	4,632	4,663	البوملي	41
23,416	23,831	24,246	24,661	25,076	عنب	43
2,395	2,423	2,452	2,480	2,508	تين	44
12,572	12,325	12,078	11,832	11,585	دراق	46
7,022	6,819	6,617	6,415	6,213	خوخ وبرقوق	47
7,941	7,682	7,424	7,165	6,906	مشمش	48
68,643	66,423	64,203	61,982	59,762	تفاح	49
4,118	4,096	4,073	4,051	4,028	الرمان	50
1,185	1,197	1,209	1,220	1,232	أجاص	51
2,207	2,166	2,125	2,084	2,044	جوافة	52
3,633	3,479	3,325	3,172	3,018	بلح وتمر	53

(2025-2010)

(2)

/

2019	2018	2017	2016	2015		
310,963	312,672	314,390	316,121	317,858	بندورة	1
66,461	65,934	65,410	64,891	64,376	كوسا	2
37,025	37,422	37,824	38,230	38,641	بادنجان	3
169,359	166,038	162,783	159,591	156,462	خيار	4
144,460	143,029	141,613	140,211	138,823	بطاطا	5
21,294	21,039	20,787	20,537	20,291	ملفوف	6
52,675	52,308	51,945	51,584	51,225	زهرة	7
52,998	50,673	48,449	46,324	44,291	فلفل أخضر	9
16,913	16,813	16,712	16,613	16,514	فول أخضر	10
41,665	39,253	36,980	34,839	32,822	فاصوليا	11
8,605	8,478	8,353	8,230	8,108	بازيلا	12
3,100	2,931	2,772	2,621	2,478	لوبيا	13
53,922	53,125	52,340	51,566	50,804	ملوخية	14
11,688	11,549	11,412	11,277	11,143	بامية	15
52,428	51,400	50,392	49,404	48,435	خس	16
38,401	38,210	38,020	37,831	37,643	شمام	17
69,994	70,148	70,302	70,456	70,610	بطيخ	18
7,804	7,541	7,286	7,040	6,803	سبانخ	19
30,183	29,703	29,231	28,767	28,310	بصل جاف	20
23,270	23,931	24,592	25,253	25,913	الليمون	21
41,449	40,769	40,088	39,407	38,726	موز	22
31,268	31,439	31,609	31,780	31,950	البرتقال	23
36,069	36,032	35,995	35,958	35,921	الكلمنتينا	24
19,067	19,097	19,127	19,157	19,187	المندلينا	25
2,792	2,811	2,831	2,850	2,869	جريب فروت	26
4,392	4,422	4,451	4,481	4,511	البوملي	27
21,340	21,755	22,170	22,585	23,000	عنب	28
2,254	2,282	2,310	2,339	2,367	تين	29
13,806	13,559	13,313	13,066	12,819	دراق	30
8,032	7,830	7,628	7,426	7,224	خوخ وبرقوق	31
9,235	8,976	8,718	8,459	8,200	مشمش	32
79,745	77,524	75,304	73,084	70,863	تفاح	33
4,231	4,208	4,186	4,163	4,141	الرمان	34
1,127	1,138	1,150	1,162	1,174	أجاص	35
2,410	2,370	2,329	2,288	2,247	جوافة	36
4,401	4,247	4,093	3,940	3,786	بلح وتمر	37

(2025-2010)

(2) /

2024	2023	2022	2021	2020		
302,552	304,218	305,890	307,571	309,261	بندورة	1
69,163	68,614	68,069	67,529	66,993	كوسا	2
35,099	35,476	35,857	36,242	36,631	باندنجان	3
186,986	183,320	179,725	176,201	172,746	خيار	4
151,828	150,325	148,837	147,363	145,904	بطاطا	5
22,617	22,346	22,078	21,814	21,552	ملفوف	6
54,544	54,165	53,789	53,415	53,043	زهرة	7
66,329	63,418	60,635	57,974	55,430	فلفل أخضر	9
17,427	17,323	17,220	17,117	17,015	فول أخضر	10
56,141	52,891	49,829	46,944	44,226	فاصوليا	11
9,271	9,134	8,999	8,866	8,735	بازيلا	12
4,102	3,879	3,668	3,468	3,279	لوبيا	13
58,089	57,231	56,385	55,552	54,731	ملوخية	14
12,406	12,259	12,114	11,970	11,828	بامية	15
57,884	56,749	55,636	54,546	53,476	خس	16
39,371	39,175	38,980	38,786	38,593	شمام	17
69,232	69,384	69,536	69,688	69,841	بطيخ	18
9,265	8,953	8,650	8,358	8,076	سبانخ	19
32,699	32,180	31,668	31,165	30,670	بصل جاف	20
19,967	20,627	21,288	21,949	22,610	الليمون	21
44,854	44,173	43,492	42,811	42,130	موز	22
30,416	30,587	30,757	30,928	31,098	البرتقال	23
36,253	36,216	36,179	36,142	36,106	الكلمنتينا	24
18,918	18,948	18,978	19,007	19,037	المندلينا	25
2,699	2,717	2,736	2,755	2,773	جريب فروت	26
4,249	4,278	4,306	4,335	4,363	البوملي	27
19,264	19,680	20,095	20,510	20,925	عنب	28
2,112	2,141	2,169	2,197	2,225	تين	29
15,040	14,794	14,547	14,300	14,053	دراق	30
9,042	8,840	8,638	8,436	8,234	خوخ وبرقوق	31
10,529	10,270	10,012	9,753	9,494	مشمش	32
90,846	88,626	86,406	84,185	81,965	تفاح	33
4,344	4,321	4,299	4,276	4,253	الرمان	34
1,068	1,080	1,091	1,103	1,115	أجاص	35
2,614	2,573	2,533	2,492	2,451	جوافة	36
5,169	5,015	4,862	4,708	4,554	بلح وتمر	37

(2025-2010)

(2)

/

2025		
300,899	بندورة	1
69,716	كوسا	2
34,726	باننجان	3
190,726	خيار	4
153,347	بطاطا	5
22,891	ملفوف	6
54,926	زهرة	7
67,705	فلفل أخضر	9
17,532	فول أخضر	10
59,592	فاصوليا	11
9,410	بازيلا	12
4,339	لوبيا	13
58,960	ملوخية	14
12,555	بامية	15
59,042	خس	16
39,568	شمام	17
69,081	بطيخ	18
9,589	سيانخ	19
33,227	بصل جاف	20
19,306	الليمون	21
45,534	موز	22
30,246	البرتقال	23
36,290	الكلمنتينا	24
18,888	المندلينا	25
2,681	جريب فروت	26
4,221	البوملي	27
18,849	عنب	28
2,084	تين	29
15,287	دراق	30
9,245	خوخ وبرقوق	31
10,788	مشمش	32
93,066	تفاح	33
4,366	الرمان	34
1,056	أجاص	35
2,655	جوافة	36
5,323	بلح وتمر	37

(2025-2010)

(2)

/

2009	2008	2007	2006	2005		
86,892	93,336	100,176	107,026	113,890	بندورة	1
15,084	15,485	15,965	16,448	16,936	كوسا	2
5,131	3,799	2,388	972	448	باننجان	3
57,578	56,416	55,437	54,511	53,636	خيار	4
4,147	2,852	1,327	210	1,760	بطاطا	5
6,343	6,085	5,784	5,480	5,174	ملفوف	6
12,057	12,427	12,859	13,294	13,730	زهرة	7
25,258	23,938	22,698	21,519	20,400	فلفل أخضر	9
7,355	7,424	7,508	7,593	7,678	فول أخضر	10
12,735	11,602	10,563	9,596	8,698	فاصوليا	11
4,479	4,426	4,379	4,334	4,290	بازيلا	12
560	486	420	359	303	لوبيا	13
4,299	4,011	3,631	3,242	2,843	ملوخية	14
2,721	2,745	2,782	2,821	2,862	بامية	15
35,503	34,803	34,133	33,478	32,840	خس	16
22,260	22,352	22,468	22,585	22,703	شمام	17
31,551	29,415	27,113	24,811	22,509	بطيخ	18
6,041	6,005	5,945	5,878	5,806	سبانخ	19
23,106	22,577	21,964	21,344	20,718	بصل جاف	20
8,927	9,990	11,086	12,183	13,279	الليمون	21
2,373	2,311	2,302	2,292	2,282	موز	22
18,864	17,698	16,449	15,201	13,952	البرتقال	23
12,066	12,483	12,937	13,392	13,847	الكلمنتينا	24
1,675	1,241	773	304	164	المندلينا	25
442	512	585	659	732	جريب فروت	26
1,225	1,323	1,426	1,530	1,634	البوملي	27
2,724	3,576	4,465	5,353	6,242	عنب	28
4,546	4,382	4,206	4,031	3,855	تين	29
4,149	4,040	3,943	3,845	3,748	دراق	30
1,834	1,712	1,597	1,482	1,367	خوخ وبرقوق	31
1,177	1,024	878	733	588	مشمش	32
9,546	8,247	7,025	5,803	4,581	تفاح	33
763	803	848	893	938	الرمان	34
391	348	302	256	210	أجاص	35
308	305	297	290	283	جوافة	36
1,872	1,934	1,990	2,045	2,100	بلح وتمر	37



(2025-2010)

(2)

/

2014	2013	2012	2011	2010		
54,041	60,436	66,844	73,258	80,068	بندورة	1
12,987	13,368	13,754	14,144	14,612	كوسا	2
(11,870)	(10,561)	(9,247)	(7,929)	6,532	باذنجان	3
63,968	62,522	61,136	59,807	58,665	خيار	4
(10,861)	(9,631)	(8,388)	(7,132)	5,646	بطاطا	5
(7,672)	(7,428)	(7,181)	(6,931)	6,639	ملفوف	6
10,124	10,482	10,842	11,205	11,630	زهرة	7
32,916	31,223	29,611	28,077	26,632	فلفل أخضر	9
6,988	7,054	7,122	7,190	7,272	فول أخضر	10
19,695	18,101	16,610	15,217	13,933	فاصوليا	11
4,761	4,699	4,639	4,581	4,529	بازيلا	12
1,012	907	810	719	636	لوبيا	13
(5,743)	(5,508)	(5,263)	(5,006)	(4,657)	ملوخية	14
2,599	2,615	2,633	2,653	2,686	بامية	15
39,234	38,447	37,679	36,928	36,207	خس	16
21,767	21,854	21,943	22,033	22,146	شمام	17
(42,558)	(40,423)	(38,288)	(36,152)	(33,852)	بطيخ	18
(6,152)	(6,152)	(6,144)	(6,129)	(6,088)	سبانخ	19
(25,805)	(25,310)	(24,809)	(24,300)	(23,706)	بصل جاف	20
3,544	4,607	5,670	6,734	7,830	الليمون	21
2,576	2,515	2,453	2,392	2,382	موز	22
(24,858)	(23,692)	(22,527)	(21,361)	(20,112)	البرتقال	23
9,906	10,323	10,740	11,157	11,611	الكلمنتينا	24
(3,914)	(3,480)	(3,046)	(2,611)	(2,143)	المندلينا	25
90	159	227	296	369	جريب فروت	26
728	825	922	1,019	1,122	البوملي	27
(1,610)	(758)	94	946	1,835	عنب	28
(5,390)	(5,226)	(5,062)	(4,897)	(4,722)	تين	29
4,670	4,561	4,452	4,343	4,246	دراق	30
2,430	2,308	2,187	2,065	1,949	خوخ وبرقوق	31
1,929	1,775	1,621	1,467	1,322	مشمش	32
15,886	14,587	13,289	11,990	10,768	تفاح	33
554	594	634	674	719	الرمان	34
(611)	(568)	(525)	(482)	(436)	أجاص	35
(334)	(330)	(326)	(323)	(316)	جوافة	36
(1,573)	(1,636)	(1,699)	(1,761)	(1,816)	بلح وتمر	37

(2025-2010)

(2) /

2019	2018	2017	2016	2015		
23,752	29,713	35,297	41,666	47,656	بندورة	1
11,435	11,722	11,940	12,309	12,609	كوسا	2
18,052	16,839	15,696	14,400	13,174	باذنجان	3
72,644	70,755	68,801	67,171	65,474	خيار	4
15,939	14,995	14,252	13,063	12,077	بطاطا	5
8,686	8,497	8,346	8,111	7,913	ملفوف	6
8,608	8,894	9,124	9,474	9,768	زهرة	7
42,797	40,623	38,537	36,576	34,694	فلفل أخضر	9
6,717	6,768	6,804	6,869	6,921	فول أخضر	10
29,523	27,291	25,182	23,237	21,399	فاصوليا	11
5,115	5,040	4,961	4,894	4,824	بازيلا	12
1,661	1,513	1,373	1,245	1,124	لوبيا	13
6,423	6,327	6,300	6,098	5,967	ملوخية	14
2,590	2,586	2,572	2,583	2,584	بامية	15
43,504	42,608	41,720	40,876	40,040	خس	16
21,434	21,494	21,532	21,617	21,680	شمام	17
52,566	50,598	48,795	46,661	44,692	بطيخ	18
5,959	6,018	6,088	6,111	6,145	سبانخ	19
27,856	27,477	27,168	26,695	26,293	بصل جاف	20
1,637	607	389	1,452	2,481	الليمون	21
3,089	2,976	2,811	2,750	2,637	موز	22
30,355	29,272	28,272	27,107	26,024	البرتقال	23
7,973	8,352	8,693	9,110	9,489	الكلمنتينا	24
5,949	5,549	5,183	4,748	4,348	المندلينا	25
235	171	111	43	22	جريب فروت	26
269	359	444	540	631	البوملي	27
5,726	4,910	4,131	3,278	2,462	عنب	28
6,166	6,013	5,872	5,707	5,554	تين	29
5,260	5,139	5,008	4,899	4,779	دراق	30
3,066	2,938	2,803	2,681	2,552	خوخ وبرقوق	31
2,733	2,570	2,399	2,245	2,082	مشمش	32
22,687	21,312	19,859	18,561	17,185	تفاح	33
377	411	440	480	515	الرمان	34
817	776	738	695	655	أجاص	35
337	337	341	337	337	جوافة	36
1,229	1,300	1,377	1,440	1,510	بلح وتمر	37

(2025-2010)

(2)

/

2024	2023	2022	2021	2020		
3,213	1,931	7,082	12,629	18,184	بندورة	1
10,582	10,699	10,821	11,021	11,226	كوسا	2
23,536	22,492	21,444	20,317	19,187	باننجان	3
84,023	81,528	79,105	76,883	74,729	خيار	4
18,932	18,493	18,038	17,353	16,653	بطاطا	5
9,299	9,207	9,112	8,973	8,831	ملفوف	6
7,631	7,785	7,942	8,162	8,383	زهرة	7
55,469	52,682	50,022	47,499	45,092	فلفل أخضر	9
6,572	6,592	6,612	6,647	6,682	فول أخضر	10
43,215	40,112	37,197	34,475	31,921	فاصوليا	11
5,555	5,460	5,367	5,281	5,197	بازيلا	12
2,570	2,364	2,170	1,990	1,820	لوبيا	13
6,154	6,282	6,397	6,418	6,427	ملوخية	14
2,721	2,684	2,649	2,627	2,608	بامية	15
48,384	47,357	46,353	45,382	44,433	خس	16
21,307	21,317	21,327	21,362	21,397	شمام	17
61,246	59,610	57,973	56,171	54,369	بطيخ	18
5,387	5,533	5,668	5,775	5,871	سبانخ	19
29,089	28,906	28,715	28,436	28,150	بصل جاف	20
6,549	5,587	4,625	3,629	2,633	الليمون	21
4,015	3,799	3,582	3,418	3,253	موز	22
35,188	34,271	33,354	32,355	31,355	البرتقال	23
6,343	6,646	6,949	7,291	7,632	الكلمنتينا	24
7,714	7,382	7,049	6,683	6,316	المندلينا	25
523	468	413	354	294	جريب فروت	26
141	63	16	100	184	البوملي	27
9,550	8,807	8,064	7,285	6,505	عنب	28
6,852	6,721	6,591	6,449	6,308	تين	29
5,942	5,798	5,655	5,523	5,392	دراق	30
3,756	3,614	3,472	3,337	3,202	خوخ وبرقوق	31
3,607	3,427	3,246	3,075	2,904	مشمش	32
30,103	28,574	27,044	25,592	24,140	تفاح	33
240	264	289	318	347	الرمان	34
1,001	966	930	892	855	أجاص	35
311	318	326	329	333	جوافة	36
825	910	996	1,073	1,151	بلح وتمر	37

(2025-2010)

(2)

/

2025	2024		
7,959	3,213	بندورة	1
10,542	10,582	كوسا	2
24,502	23,536	باننجان	3
86,721	84,023	خيار	4
19,141	18,932	بطاطا	5
9,348	9,299	ملقوف	6
7,538	7,631	زهرة	7
56,735	55,469	فلفل أخضر	9
6,567	6,572	فول أخضر	10
46,535	43,215	فاصوليا	11
5,656	5,555	بازيلا	12
2,791	2,570	لوبيا	13
5,933	6,154	ملوخية	14
2,772	2,721	بامية	15
49,446	48,384	خس	16
21,321	21,307	شمام	17
62,717	61,246	بطيخ	18
5,211	5,387	سبانخ	19
29,187	29,089	بصل جاف	20
7,478	6,549	الليمون	21
4,283	4,015	موز	22
36,022	35,188	البرتقال	23
6,077	6,343	الكلمنتينا	24
8,013	7,714	المندلينا	25
574	523	جريب فروت	26
213	141	البوملي	27
10,256	9,550	عنب	28
6,971	6,852	تين	29
6,097	5,942	دراق	30
3,905	3,756	خوخ وبرقوق	31
3,795	3,607	مشمش	32
31,709	30,103	تفاح	33
221	240	الرمان	34
1,034	1,001	أجاص	35
300	311	جواقة	36
732	825	بلح وتمر	37

